

Reef 2050

Integrated Monitoring and Reporting Program

Business Strategy
2020-25



Australian Government

**Great Barrier Reef
Marine Park Authority**



Great Barrier Reef Marine Park Authority
PO Box 1379, Townsville, Qld 4810

07 4750 0700 info@gbrmpa.gov.au

www.gbrmpa.gov.au



TRADITIONAL OWNERS
LAND AND SEA COUNTRY
GREAT BARRIER REEF



© Commonwealth of Australia 2022

Published by the Great Barrier Reef Marine Park Authority ISBN 978-0-6450437-6-1

This publication is licensed by the Commonwealth of Australia for use under a Creative Commons By Attribution 4.0 International licence with the exception of the Coat of Arms of the Commonwealth of Australia and the Queensland Government, the logos of the Great Barrier Reef Marine Park Authority, Australian Institute of Marine Science, CSIRO, IMOS and any other material protected by a trademark, content supplied by third parties and any photographs. For licence conditions see: <http://creativecommons.org/licenses/by/4.0>



While all efforts have been made to verify facts, the Great Barrier Reef Marine Park Authority takes no responsibility for the accuracy of information supplied in this publication.

Aboriginal and Torres Strait Islander readers are advised this publication may contain names and images of deceased persons.

Cover photo: (c) Commonwealth of Australia (GBRMPA), A.Denzin

A catalogue record for this publication is available from the National Library of Australia

This publication should be cited as:

Australian Government and Queensland Government 2022, Reef 2050 Integrated Monitoring and Reporting Program Business Strategy 2020-25, Great Barrier Reef Marine Park Authority, Townsville

Comments and questions regarding this document are welcome and should be addressed to:



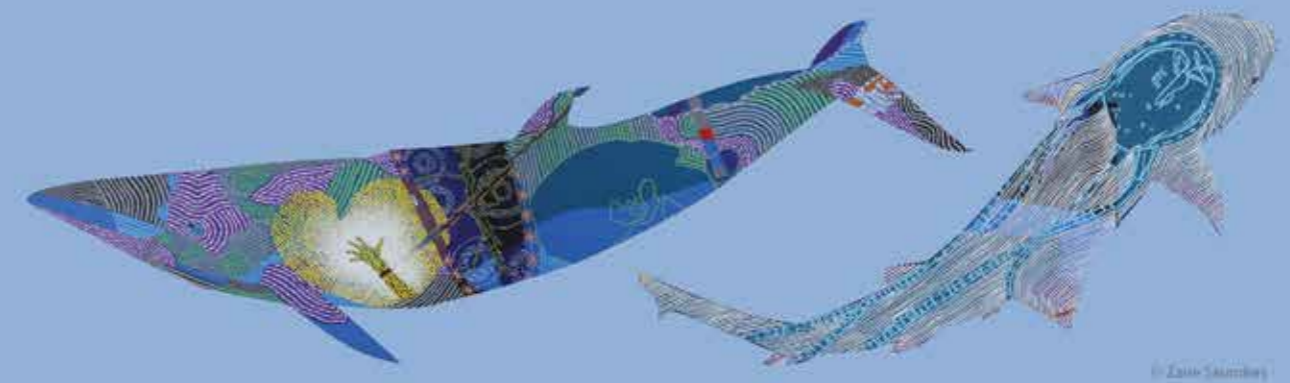
Great Barrier Reef Marine Park Authority
280 Flinders Street (PO Box 1379)
Townsville QLD 4810, Australia
Phone: (07) 4750 0700
Fax: (07) 4772 6093
Email: info@gbmpa.gov.au
www.gbmpa.gov.au

Cover photo: GBRMPA staff testing drone technology at Hill Inlet, Whitsunday Island.



The Reef 2050 Integrated Monitoring and Reporting Program (RIMReP) acknowledges Reef Traditional Owners unique wisdom and enduring connections that have informed the custodianship of the Reef for millennia.

We pay our respects to the Traditional Owners as the first scientists of this land and sea, and value their traditional knowledge which continues to inform the current management and stewardship of the Reef for future generations.



© Zaira Sabirina

Contents

Foreword	3
1. Introduction	4
2. This Strategy	5
2.1 Monitoring gaps and ongoing improvement	6
2.2 The Program Today	6
2.3 Traditional Owner Engagement	7
3. Governance and Program Management	8
3.1 Objectives	8
4. Management Needs	10
4.1 Objectives	10
5. Collect Information	12
5.1 Objectives	12
6. Access Information	14
6.1 Objectives	14
7. Show - Guide and Report	16
7.1 Objectives	16
8. Continual Improvement	18
8.1 Objectives	20
9. Investment Approach	22
Glossary	24
Acronyms	24
Definitions	24

Foreword



This strategy provides an overview of the Reef 2050 Integrated Monitoring and Reporting Program (the Program), outlines its progress to date, and provides a roadmap until 2025.

It builds on the 2018 Program Strategy which set the benchmark for scoping and designing an integrated monitoring and reporting program. The Program's primary purpose is to enable timely and suitable responses by Reef managers and partners to emerging issues and risks, and evaluate whether the Reef 2050 Plan is on track to meet its objectives and goals.

The Great Barrier Reef has faced a combination of pressures, including mass coral bleaching events, an ongoing outbreak of predatory crown-of-thorns starfish, and severe tropical cyclones. The challenges facing the health of the Reef is unprecedented in our lifetime. It has focused and galvanised collective effort to better understand the Reef and in doing so strengthen resilience-based management. The Reef 2050 Integrated Monitoring and Reporting Program is the key enabler of resilience-based management under the Reef 2050 Plan.

Establishing an integrated monitoring program across the Great Barrier Reef and its adjacent catchment – a vast area – is a major undertaking. It has required partners to navigate a wide range of complex and challenging issues – many of which are still being assessed – and draw together multiple environmental, social and economic monitoring and modelling programs, with many achievements to date.

To ensure the integrity of highly valuable long-term data sets and address priority monitoring gaps, funding has been strategically invested by government and partners. A major undertaking over the next few years will be the development of the technical systems, decision support tools and interactive tools to put this information at the fingertips of managers and Reef users.

We are embarking on the Program implementation phase supported by strong governance and heightened engagement with Traditional Owner members. By the end of 2025 we will have an advanced online system in place, greater access to monitoring information and tools to strengthen resilience-based management and reporting.

Josh Thomas
CEO
Great Barrier Reef Marine Park Authority

1. Introduction

The Australian and Queensland governments' Reef 2050 Long-Term Sustainability Plan (Reef 2050 Plan) provides an overarching strategy for managing and protecting the Great Barrier Reef. The Reef 2050 Plan's progress will be measured against clear objectives and goals that support the Reef's health and resilience.

A key foundational component of the Reef 2050 Plan is implementation of the Reef 2050 Integrated Monitoring and Reporting Program (RIMReP, or the Program). RIMReP will provide a comprehensive and up-to-date ecological, social and cultural understanding of the Great Barrier Reef. The Program's primary purpose is to drive resilience-based management and track progress against the objectives and goals outlined in the Reef 2050 Plan. Resilience-based management builds on foundational management programs and places a strong emphasis on using the best available information and forecasting tools to adjust management actions to improve Reef health and recovery.

RIMReP is a joint partnership involving Australian and Queensland government entities together with Traditional Owners. It is primarily funded through the Great Barrier Reef Marine Park Authority, the Reef Trust Partnership and significant in-kind contributions from each partner.

A centrepiece of the Program is the interactive online Reef Knowledge System – the 'first stop shop' for up to date information about the Reef to guide effective management decisions in a rapidly changing world. The Program serves a critical enabling function to the five yearly Outlook Reports and the five yearly review of the Reef 2050 Plan.



Rudi Yoshida and Louise Johns monitor seagrass status and health on Green Island for the Marine Monitoring Program.

(c) Len McKenzie, Seagrass-Watch HQ

2. This Strategy

This five year Strategy sets the outcomes and objectives required to achieve the overarching RIMReP vision (Figure 1). The outcomes and objectives will guide development and prioritisation of the annual business plans. Performance indicators will guide program evaluation and drive continuous improvement across the Program. This Strategy will be reviewed in 2025, and every five years, taking into account the 2024 Outlook Report and review of the Reef 2050 Plan. This will ensure RIMReP remains contemporary, adapts to changing needs and embraces emerging data and technology. Seven overarching outcomes set the direction for the Program. Performance indicators will be reviewed annually by the governance groups to measure progress and program effectiveness.



Figure 1 – Strategic framework

2.1 Monitoring gaps and ongoing improvement

Maintaining core, long term monitoring programs and identifying emerging gaps which underpin the Reef 2050 Plan is critical to success of the Program. RIMReP partners will focus on sharing information and knowledge and drive interoperability across monitoring programs to support decision making and reporting to deliver real outcomes for the Reef. This will require an adaptive approach and identification of emerging knowledge gaps and technologies.

Currently, 12 monitoring and modelling programs operating in Australian waters (and the adjacent catchment) are fundamental to RIMReP. As new needs are identified, priorities may change and as new data streams become available these will be updated. Linkages and alignment to the Paddock to Reef Program, will continue to be explored over the next five years.

2.2 The Program Today

RIMReP design was completed in 2019 and is now being implemented through Annual Operating Plans. Seven priority areas (Figure 2) will guide the ongoing operation and continuous improvement of RIMReP.

RIMReP is governed by an Executive Group and an Operations Group, with membership from the Great Barrier Reef Marine Park Authority, Australian Institute of Marine Science, Integrated Marine Observing System, Commonwealth Scientific and Industrial Research Organisation, Queensland Department of Environment and Science, the Department of Agriculture, Water and the Environment and Traditional Owner members (see back cover for membership and roles). A Statement of Collaboration (see Governance and Program Management) outlines how the partnership operates.

Support through the Reef Trust Partnership (RTP) is filling critical monitoring gaps identified during the Program design phase. Work has commenced on the Program's Data Management System that will provide access to priority data sources through a federated system and support interoperability.

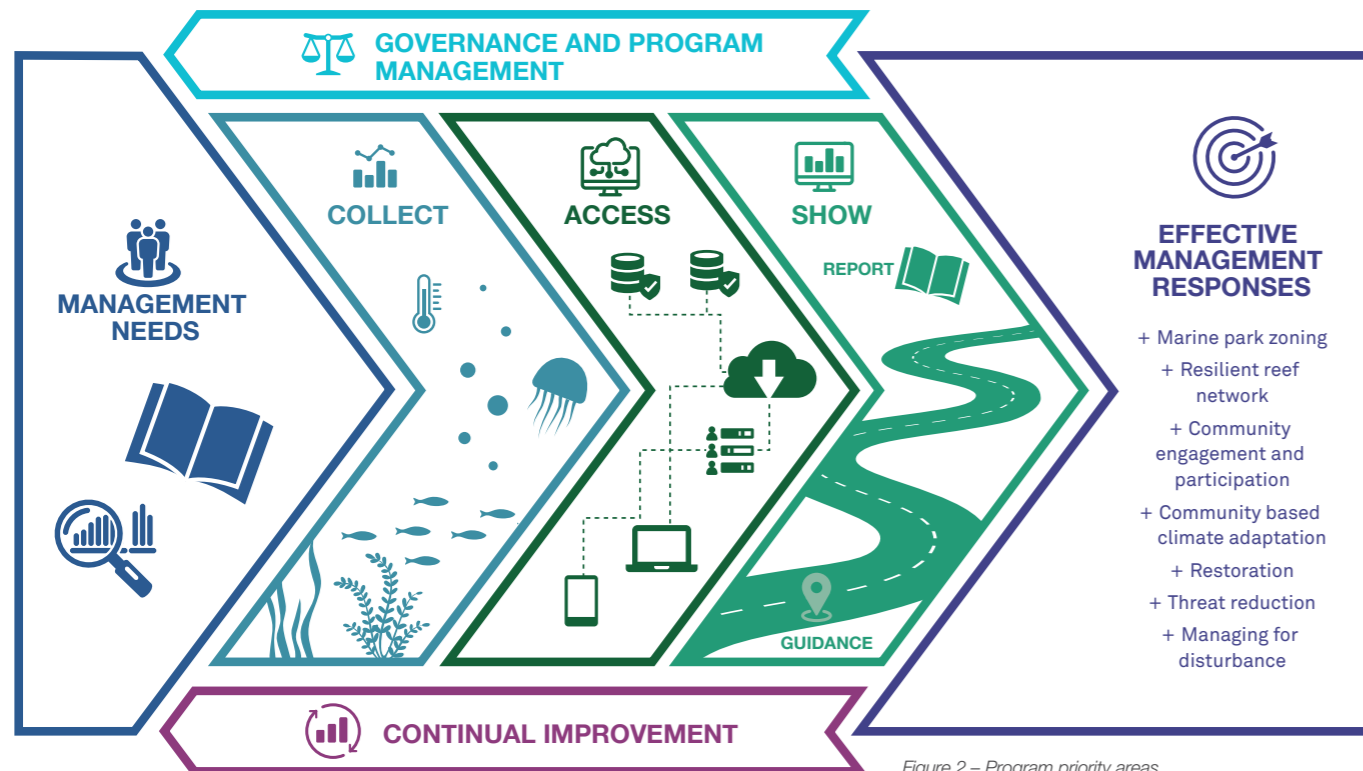


Figure 2 – Program priority areas

2.3 Traditional Owner Engagement

The Great Barrier Reef World Heritage Area is both a natural and cultural landscape. Its Traditional Owners are the first custodians of land and sea and have been using traditional Indigenous science and monitoring methods for tens of thousands of years. Traditional Owner membership of the Executive and Operations Groups forms part of RIMReP's Governance, providing advice on Traditional Owner involvement, perspectives and advising on how to incorporate Traditional Owner knowledge and ensure effective integration of programs such as the Strong peoples – Strong country framework (Figure 3). The Strong peoples – Strong country is an Indigenous heritage and Cultural Wellbeing framework connecting the health of the Reef and its catchment to the quality of life enjoyed by Traditional Owners.

It provides a Traditional Owner led approach for systematic monitoring of the condition of the Reef and its catchments as an Indigenous heritage asset. It reflects the Traditional Owner worldview that their quality of life is connected inseparably to and underpinned by, their Land and Sea Country. This monitoring framework aims to define Indigenous Heritage objectives, so that the Reef 2050 Long Term Sustainability Plan can measure progress against these.

Critical to the success of achieving the RIMReP vision is the effective and meaningful engagement with Reef Traditional Owners, sharing knowledge and skills in a mutually beneficial and culturally appropriate way.

This includes showcasing information in a culturally appropriate way that meet standards and principles of Free, Prior and Informed Consent with knowledge holders, whilst utilizing Data Sharing Agreements that include benefit sharing arrangements to appropriately acknowledge and protect Reef Traditional Owners knowledge. Each of the RIMReP partners will engage with Traditional Owners using their own engagement frameworks or those of Traditional Owner groups, and should be guided by the Program's overarching vision and principles, acknowledging that:

- Free, Prior and Informed Consent (FPIC) is critical for defining engagement, ensuring the protection and use of the information, and that the sharing of knowledge is informed by Traditional Owners' consent.
- Effective partnerships with Traditional Owners support better outcomes and needs to be based on respect, mutual benefit, equity, honesty, and are co-designed, and relationship driven.
- Traditional Owners continue to hold Intellectual Property rights over knowledge, data and information. Through the use of Data Sharing Agreements, Traditional Owners are able to determine which data is shared, how it is shared and with whom it is shared. Data Sharing Agreements reflect Traditional Owners ownership and cultural protocols when dealing with external community. Negotiated Data Sharing Agreements will be based on access and benefits to both parties. All parties will need to enter into and resource the development of Data Sharing Agreements with Traditional Owner communities about their data.



Figure 3 – The Strong peoples – Strong country framework for monitoring Indigenous heritage in RIMReP © Mallie Designs, licensed for use by RIMReP partners.



3. Governance and program management

Effective, clear and transparent governance and program management is essential to the successful delivery of the Program and to support collaboration between partners.

A dedicated and experienced Program Management Office, operated by the Authority, will coordinate the required governance mechanisms and provide program support to those responsible for shaping and delivering on this Plan and the five year business strategy.

Chaired by the Authority, the Executive Group is the principal decision making body overseeing the Program; setting strategy, direction and managing risk. The group includes Traditional Owner members and senior executives from each of the Partner organisations. The Operations Group provides a cross-agency platform for implementation of objectives and delivery the five year road maps through Annual Business Planning. Governance groups are supported and coordinated by a Program Management Office (PMO).

All RIMReP initiatives are prioritised, planned and delivered through Annual Business Plans.

3.1 Objectives

- Drive delivery of the 5 Year Business Strategy [GP1].
- A strong and collaborative Partnership, providing a coordinated platform for achievement and effective management of risk [GP1, GP2].
- Delivery of Program Management Office (PMO) and governance support services to maintain momentum, monitor progress and identify risks and opportunities [GP1].
- Accountable and auditable program delivery [GP1].
- Coordinate annual and sustainable funding for the Program [GP3].

ROAD MAP



PERFORMANCE INDICATORS

OUTCOME	PERFORMANCE INDICATORS
Business Strategy 2020-25 provides clear direction, accountability and support to deliver the Program's vision.	GP1: Delivery of all Program outcomes and performance measures.
	GP2: The Program partnership remains strong, committed and continues to work to a shared purpose.
	GP3: Sustainable funding and commitment across the partnership to support ongoing maintenance and relevance.



Researchers surveying the health of inshore coral reefs along a transect line

(c) AIMS, Great Barrier Reef Marine Monitoring Program



(c) Commonwealth of Australia (GBRMPA)

Diver surveying reef health as part of the Eye on the Reef Program



4. Management Needs

Management needs are the fundamental driver of the Program, informing all Program priorities. Priorities stem from legislative obligations, the Reef 2050 Plan and significant work over many years with experts to identify critical information gaps and management effectiveness improvements.

Primary Program management needs supported include:

- Reporting progress against the Reef 2050 Plan (and future Outlook Reports).
- Identification, prioritisation to address key science and knowledge gaps.
- Enabling early detection of trends and changes in the Reef's environment, informing the assessment of threats and risks, to drive resilience-based management.

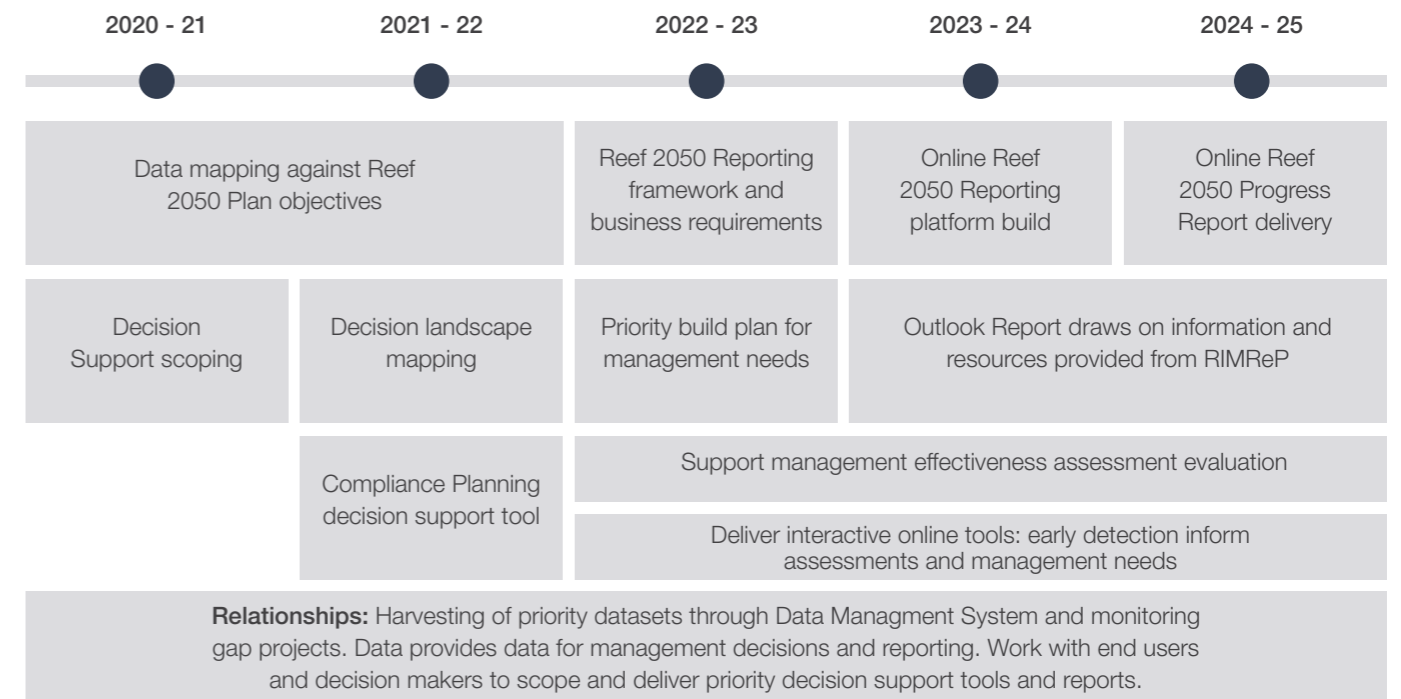
The Great Barrier Reef is a multi-use marine park, managed jointly by the Authority and the Queensland Parks and Wildlife Service and for millennia by Reef Traditional Owners.

The Reef 2050 Plan provides the overarching strategy for the Reef, describing objectives which articulate the desired position for the Great Barrier Reef now to 2050 and beyond.

4.1 Objectives

- Develop metrics and report progress against the Reef 2050 Plan, its objectives and goals [MN2].
- Identify, prioritise and influence others to address priority science, monitoring and knowledge gaps [MN2, MN5 and MN6].
- Enable early detection of trends to inform risk-based decision making, and strengthen resilience-based management [MN1, MN2, MN3 and MN6].
- Improve management based on the findings of Great Barrier Reef Outlook Reports [MN6].
- Develop fit-for purpose decision support tools and support emerging technology and knowledge systems [MN1, MN2 and MN6].
- Communicate management needs, management outcomes and their effectiveness [MN5].

ROAD MAP



PERFORMANCE INDICATORS

OUTCOME	PERFORMANCE INDICATORS
Reef managers, Traditional Owners and other stakeholders are empowered with information and tools that support improved management, responsiveness and decision-making	MN1: Efficiencies in Reef management operations.
	MN2: Improved decision making guided by more integrated information and support tools.
	MN3: Program has met management priorities and needs.
	MN4: Adoption of the Reef Knowledge System by internal users, measured by analytics and survey.
	MN5: Widespread awareness of the Program, its capabilities and limitations.
	MN6: Ongoing updated and improved Reef information.





5. Collect Information

Management actions and reporting are reliant on robust data from critical monitoring programs, and emerging science and knowledge.

The *Collect* aspect of RIMReP will continue to support Reef managers in their planning and day-to-day decision making, underpin reporting and provision of Reef information to the public.

Maintaining existing long-term monitoring programs and developing and supporting new monitoring activities and technologies is critical to the delivery of improved information.

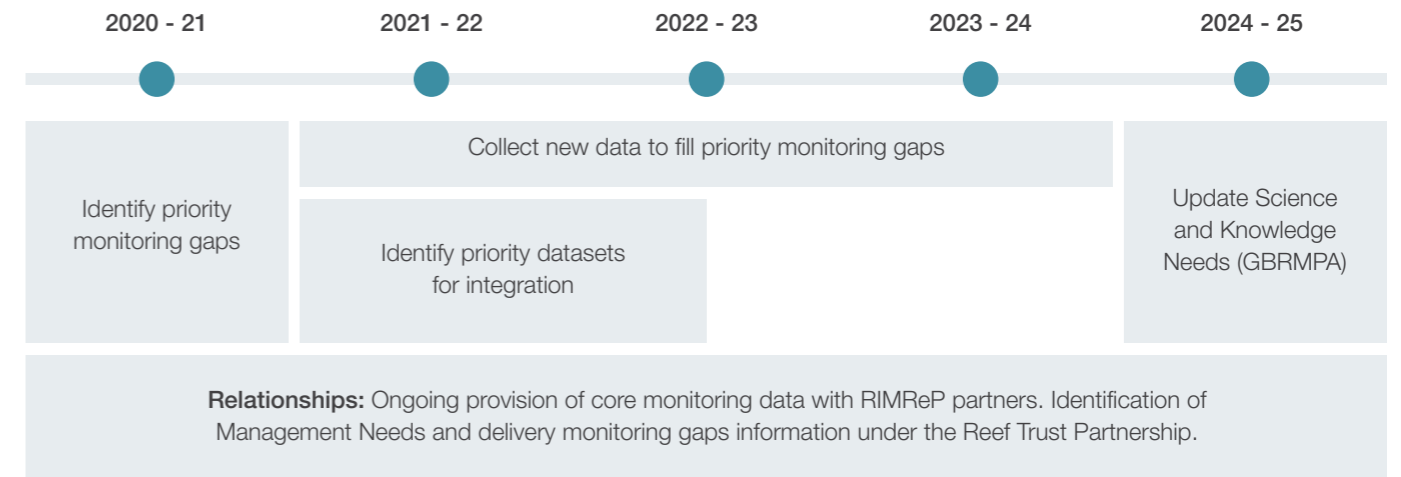
Maintaining long-term monitoring and reporting programs supported by an integrated network of monitoring technology is a critical success factor for RIMReP. This requires the ongoing collection of quality, robust monitoring data that meets management and reporting needs.

Information needs are broad and dynamic. **Priority Monitoring Gaps** identified through a structured decision making process are being addressed with critical data being delivered in time for Outlook and Reef 2050 reporting in 2024-2025. The Authority's **Science and Knowledge Needs for Management**, and ongoing prioritisation by the Programs' governance groups will set the framework for monitoring priorities.

5.1 Objectives

- Integration of monitoring data and knowledge, aligned with priority monitoring needs and the Authority's Science and Knowledge Needs for Management [C11 and C12].
- Establish data standards and improve use and interoperability of collected data [C11 and C12].
- More accessible and interactive information for Reef managers, reef users, Traditional Owner communities and the general public [C12 and C14].
- Continue to improve core monitoring programs to meet metric and indicator reporting [C13].

ROAD MAP



PERFORMANCE INDICATORS

OUTCOME	PERFORMANCE INDICATORS
More accessible, timely and interactive information about the Great Barrier Reef and the communities it supports.	CI1: High quality data defined, collected and accessible. CI2: Priority gaps monitoring operational and accessible to the program. CI3: Ongoing monitoring service and support capability defined, in place and funded.
Required data, available and supportable for 'Guide', 'Show' and 'Report'.	CI4: All data sharing agreements in place (as required).



Collection of water samples in Cape York to inform water quality reporting

(c) Cape York Water Partnerships & Lama Lama Rangers



6. Access Information

Given challenges facing the Reef, we need to be more informed, responsive and able to make considered and efficient decisions to support resilience-based management. This requires improved systems to make data and information easier to locate, more accessible, interoperable and usable by decision-makers.

Access to timely and spatially explicit information is critical given the dynamic nature of the Great Barrier Reef. Progress reporting against the Reef 2050 Plan will require large amounts of information to show the trend of key metrics.

The establishment of a purpose built catalogue, repository and directory of information will be enabled within a Data Management System (DMS). The Data Management System will form the base upon which visualisation, decision support and reporting will be built.

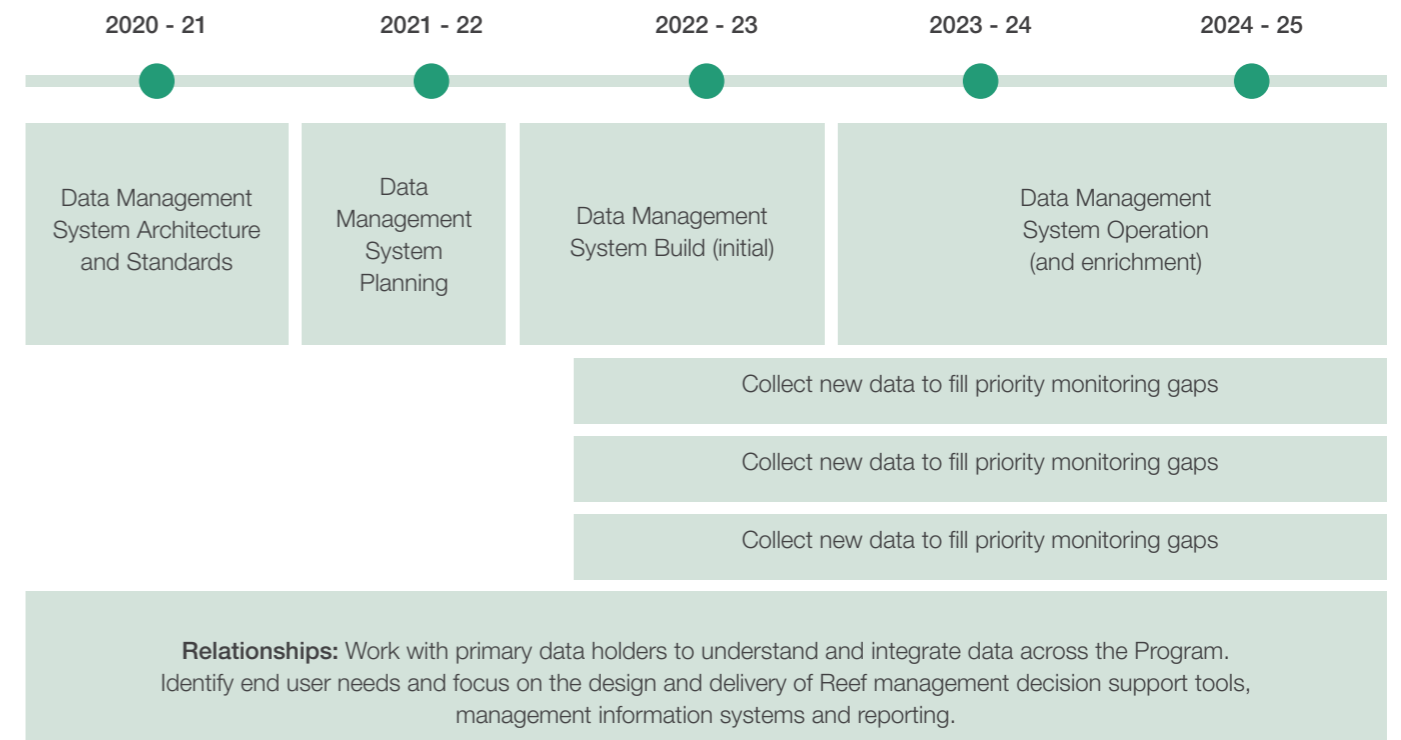
The Data Management System will involve relevant partners and be inclusive to ensure data meets required standards, follows Free Prior and Informed Consent with Traditional Owners and meets end user needs.

Where required, the Data Management System will connect and share with other systems. Maximising interoperability of data is a key driver for RIMReP, the government more broadly, Traditional Owners and the diverse range of engaged Reef stakeholders.

6.1 Objectives

- A Data Management System, where required information is easily located and accessed [AI1 and AI2].
- Responsive and sustainable information platform, supporting knowledge systems needs [AI4 and AI5].
- A platform where 'big data' can be analysed for management information and systems, including the Reef Knowledge System [AI5].
- Negotiate and manage data sharing agreements, protecting ownership rights and privacy [AI1 and AI2].
- Improved efficiency of access to information through automation of repetitive tasks [AI1, AI2 and AI3].

ROAD MAP



PERFORMANCE INDICATORS

OUTCOME	PERFORMANCE INDICATORS
An operational 'fit-for-purpose' Data Management System servicing Program requirements, that is sustainable over time.	AI1: A Data Management System that is operational and services Program requirements.
	AI2: Enabled access to federated information sources.
	AI3: Minimised duplication or overlap of information resources.
Greater collaboration and interoperability between monitoring programs	AI4: Ongoing support defined, planned and funded.
	AI5: Reef and catchment monitoring, modelling and adaptation programs benefit from the data management system and learnings are shared across programs.



7. Show – Guide and Report

This priority relates to synthesising, integrating and presenting information in useful forms to better facilitate evidence-based reporting and provide guidance to decision-makers.

The ‘Show’ priority includes continuous improvements to the Reef Knowledge System, the development and implementation of a reporting framework for the Reef 2050 Plan and the identification of priority decision support needs with the vision to build decision support tools.

The Reef Knowledge System provides an online window into the Great Barrier Reef’s complex social and natural ecosystem, will integrate a wide variety of information and knowledge to inform and guide management decisions in a rapidly changing environment. The Reef Knowledge System will evolve in response to user needs, the increasing availability of data, new science, technologies and knowledge.

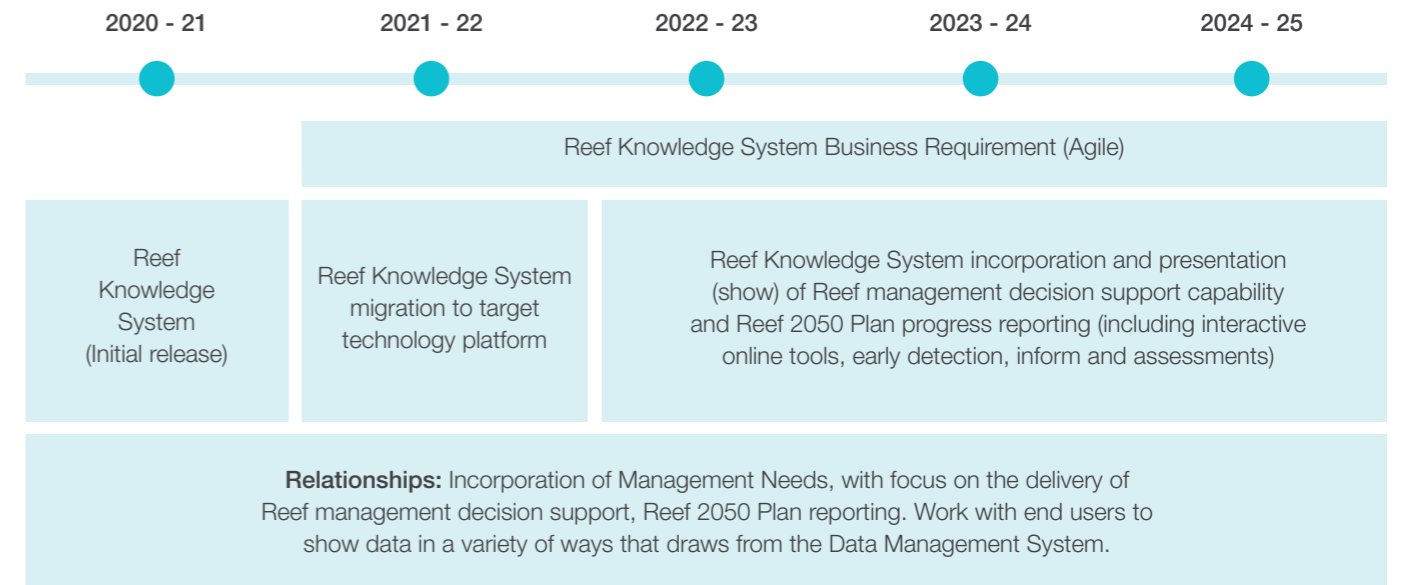
The Reef Knowledge System will provide both an external and internal online interactive portal for managers. It will further provide internal-access to management information layers that can be overlaid to improve decision making (e.g. planning, compliance, intervention activities).

RIMReP and its Reef Knowledge System will connect information across domains (such as the Reef Restoration and Adaptation Program and Crown-of-thorns Starfish Control Innovation Program), enabling more informed (strategic, tactical and operational) decision making. The Reef Knowledge System will also link users to RIMReP partner systems and other useful Reef information (e.g. eReefs and Paddock to Reef).

7.1 Objectives

- The Reef Knowledge System is upgraded and transitions from a prototype to a mature and integrated interactive platform [SI1, SI2 and SI3].
- Provision of decision support tools and visualisation tools for managers and the public through both internal and external interfaces [SI1, SI2 and SI3].
- Increased situational awareness to inform compliance, planning, permit assessment and RIMReP Partners program planning [SG1 and SG2].
- Provision of comprehensive, sustainable information that informs Reef 2050 Plan progress reporting [SR1, SR2 and SR3].

ROAD MAP



PERFORMANCE INDICATORS

OUTCOME	PERFORMANCE INDICATORS
Show Information (SI)	
People using the Reef Knowledge System and related tools find them relevant, engaging, interactive and easy-to-use.	<p>SI1: Measurable web analytics that demonstrates a high-level of adoption and usage as a gateway portal.</p> <p>SI2: User survey information reflecting user satisfaction and a feedback loop for further development.</p> <p>SI3: Defined and met service levels and supportable maintenance costs, with easy update capability for content managers.</p>
Show Guide (SG)	
Reef managers are better informed by robust information, are more responsive and able to make considered, effective and efficient decisions.	<p>SG1: Measurable use of decision support tools in operational Reef management.</p> <p>SG2: Management decisions more swiftly informed with greater access to information to inform decisions.</p>
Show Report (SR)	
Reef 2050 reporting is informative, robust and provides an objective picture of the values and their trend.	<p>SR1: Measurable efficiency gain in delivery of Reef 2050 Plan progress and other reports.</p> <p>SR2: Feedback from key Reef 2050 stakeholders is positive.</p>
Reporting is influential in driving adaptive management and investment.	<p>SR3: Defined usage of reporting information in management decisions and other information queries.</p>



8. Continual Improvement

Continual improvement processes will ensure that RIMReP responds to changes to the operating environment and emerging available technologies.

Across the life of the Program, continuous improvement should increase the efficiency and effectiveness of Reef management decisions and Reef 2050 Plan progress reporting. Active investment in continuous improvement will allow the Program to adapt to changes in the operating environment, user needs, emerging technologies and knowledge systems sources.

This will be achieved through annual monitoring against performance indicators, built-in effectiveness reviews of systems and outputs (e.g. decision support tools) and ensuring monitoring information tangibly links to an end purpose.

RIMReP is one of many programs established to improve the outlook for the Reef and its Catchment. The operating environment is diverse and includes the Paddock to Reef Program (Catchment related), the Reef Restoration and Adaptation Program and the Crown-of-thorns Starfish Control Innovation Program (within the Reef). No two programs duplicate. However, there will be greater benefit if cohesion and interoperability occurs across programs in the planning and implementation phases. In addition to the need to deliver on its vision, RIMReP will look for opportunities to value-add to and receive value from partner programs supporting the health and resilience of the Reef (Figure 4). RIMReP, as a whole, forms a critical enabler of continuous improvement through the Reef 2050 Plan, policy and stewardship actions.

Interoperability and effectiveness

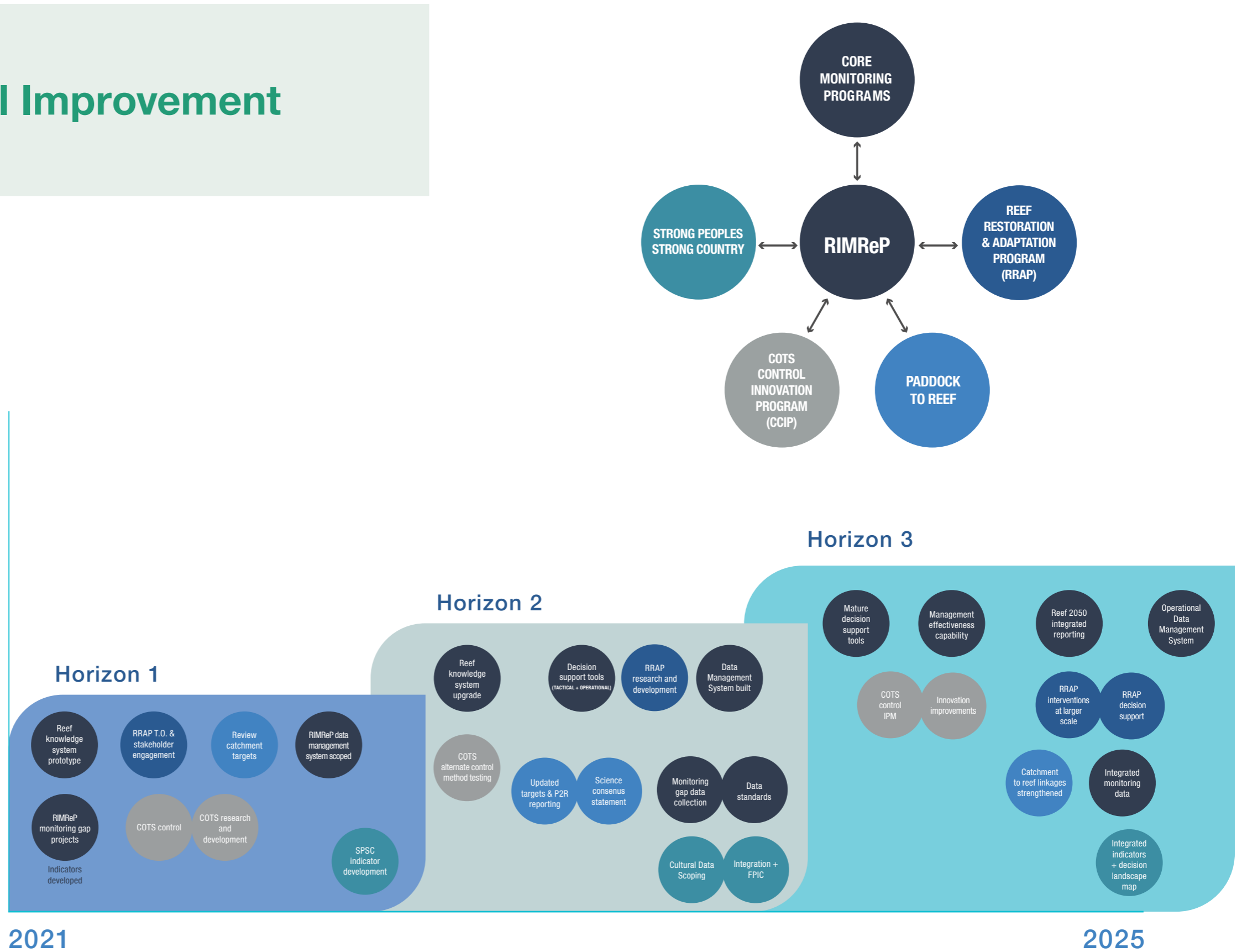
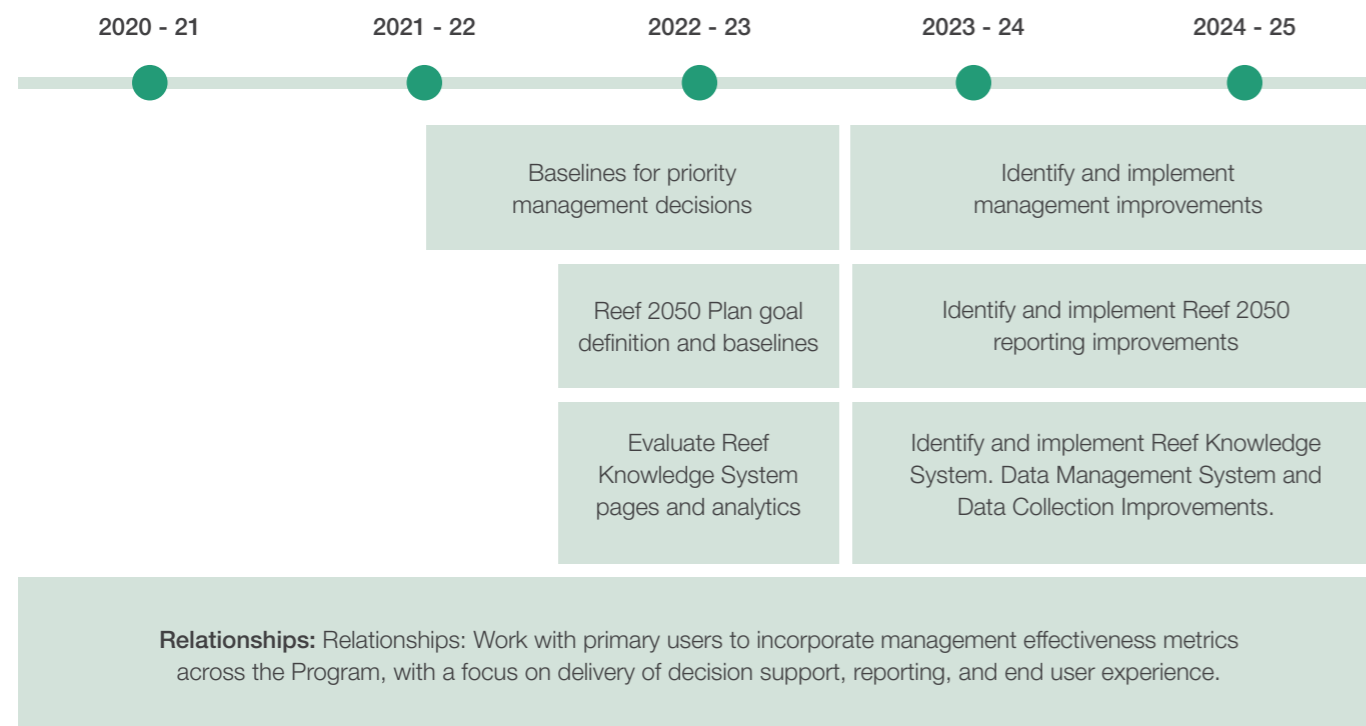


Figure 4: RIMReP priorities over time horizons in the context of other Reef and Catchment programs

8.1 Objectives

- Deliver improvements across the Program that adapt to changes in the operating environment, incorporate new ways of working with emerging technologies and knowledge sources [C12].
- Establish quantitative and qualitative measures across Program delivery and operationalise to enable reliable and effective improvements to be made [C11].
- Deliver Quality Assurance and Quality Control capability across the Program [C11 and C12].
- Involve partners, stakeholders and users in regular evaluation of the Program [C11, C12 and C13].

ROAD MAP



PERFORMANCE INDICATORS

OUTCOME	PERFORMANCE INDICATORS
Information and monitoring meets best practice standards, is integrated and evolves to meet emerging needs and technology advances	<p>C11: Baseline indicators established for Reef 2050 Plan progress reporting, Reef management decisions and the Reef Knowledge System.</p> <p>C12: Operational processes for setting of improvement targets and responding to variance in indicator achievement.</p> <p>C13: Data standards improve over time, with priority data sets meeting best practice standards.</p>





9. Investment Approach

RIMReP is recognised as an investment priority under the Reef 2050 Plan. Adequate, long-term investment is fundamental to the effective and successful implementation and innovation of RIMReP.

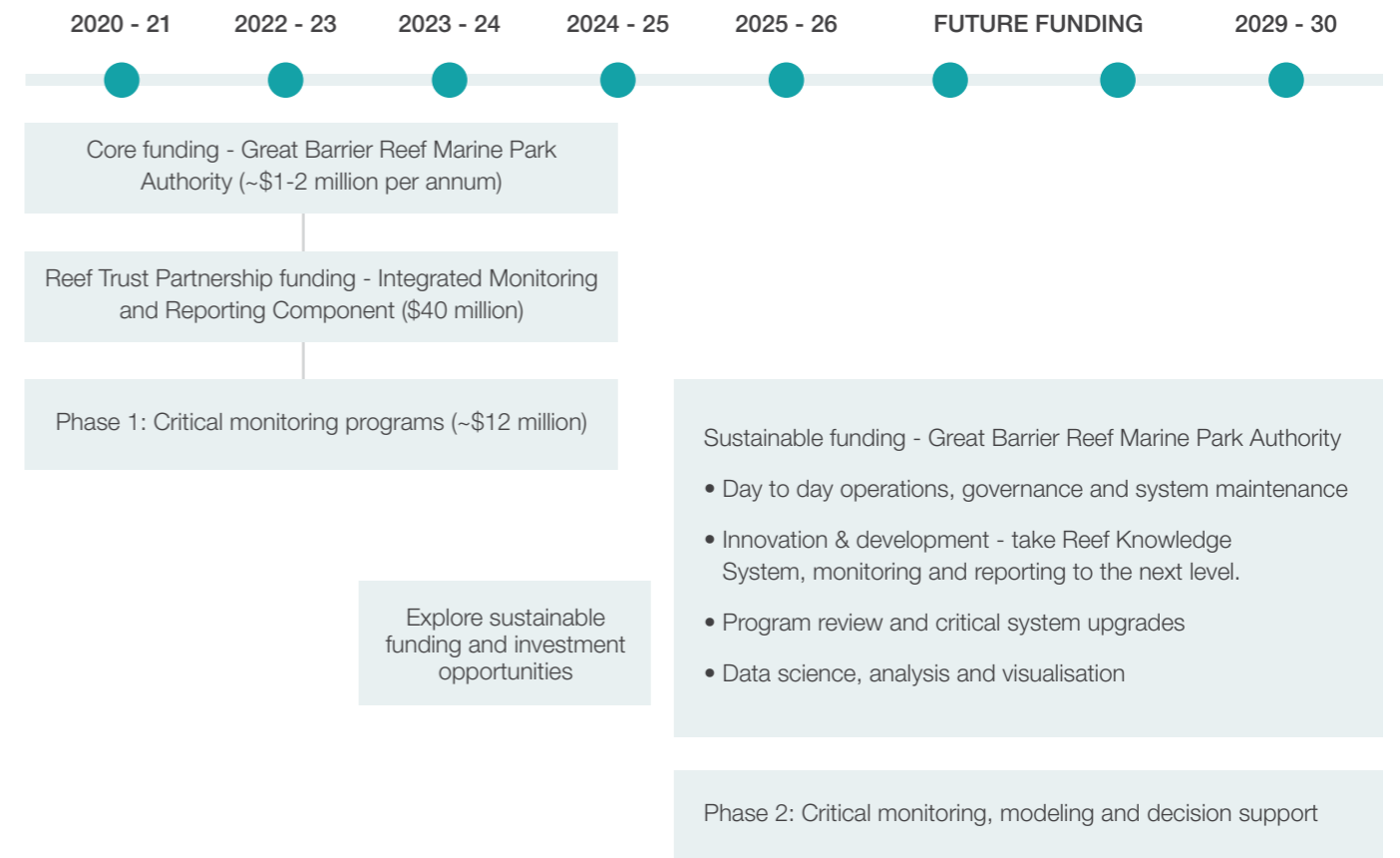
The Australian and Queensland governments recognise the importance of providing evidence-based reporting on the health of the Great Barrier Reef World Heritage Area. Ongoing support from Partner agencies remains essential, providing the data, technology, knowledge and insight to power RIMReP and to keep it at the forefront of integrated monitoring and reporting.

RIMReP will continue to be coordinated and administered by the Great Barrier Reef Marine Park Authority, the lead management agency for the Great Barrier Reef, with a large part of its core operations funded through the Authority. Strategic growth of the Program will be scaled to resources available.

Investment in the Program design and early implementation phase has been substantial and necessary to build the foundations. The size and capability of the program will remain dynamic as the program evolves, efficiencies are found, funding sources evolve, and priorities change. Currently RIMReP is in the early implementation phase. In 2022 the Reef Knowledge System prototype will be transitioned onto a new platform with greater access to interactive tools and dashboards. A fully integrated system, that links to the data management system will be delivered in 2024-2025, with projected costs being finalised.

The operational Data Management System will be realised in 2025, which coincides with a cessation of Reef Trust Partnership funding. Planning for sustainable funding will commence mid-2023 in order to explore opportunities for the ongoing evolution of the Program.

ROAD MAP



Glossary

ACRONYMS

Term	Definition
AIMS	Australian Institute of Marine Science
CMS	Content Management System
COTS	Crown of Thorns Starfish
CSIRO	Commonwealth Scientific and Industrial Research Organisation
DAWE	Commonwealth Department of Agriculture, Water and the Environment
DES	Queensland government Department of Environment and Sustainability
DMS	Data Management System
DSS	Decision Support System
GBRF	Great Barrier Reef Foundation
IEP	Reef 2050 Independent Expert Panel
IMOS	Integrated Marine Observing System
MIS	Management Information System
PMO	Program Management Office
QPWS	Queensland Parks and Wildlife Service
RAC	Reef 2050 Advisory Committee
RKS	Reef Knowledge System
RRAP	Reef Restoration and Adaptation Program
RTP	Reef Trust Partnership
TO	Traditional Owner

DEFINITIONS

Term	Definition
Program	Reef Integrated Monitoring and Reporting Program
Resilience-Based Management	Resilience-based management uses knowledge of current and future drivers influencing ecosystem function (e.g., coral disease outbreaks, changes in land-use, trade, or fishing practices) to prioritize, implement, and adapt management actions that sustain ecosystems and human well-being.
RIMReP	Reef Integrated Monitoring and Reporting Program

The RIMReP partnership

The Great Barrier Reef Marine Park Authority (the Authority). Chairing the Executive Group and Operations Group, the Authority leads the coordination and delivery of Program. As the lead managing agency for the Reef and a Member of the Executive Steering Committee for the Reef 2050 Plan, the Authority works with partners to protect the Reef for future generations. The Authority will also be one of the primary users of the data from the program and decision support tools generated.

Commonwealth Department of Agriculture, Water and the Environment (AWE), specifically the Reef Branch of AWE, which forms part of the Executive Steering Committee for the Reef 2050 Plan. Involvement in the partnership facilitates alignment with other Commonwealth initiatives, such as programs under the Reef Trust Partnership and the Reef 2050 Plan.

Australian Institute of Marine Science (AIMS). With a distinguished record of marine monitoring and scientific capability across Australia, particularly the Great Barrier Reef, the partnership with AIMS provides key monitoring information, links with other programs (e.g. the Reef Restoration and Adaptation Program) and access to relevant scientific and technology expertise upon which the Program is based.

Integrated Marine Observing System (IMOS). IMOS operates observing equipment across Australia's coastal and open oceans. Their proven capability to deliver and manage oceanographic data assets and an integrated data management system will provide critical data and access to relevant scientific expertise upon which the Program is based.

Commonwealth Scientific and Industrial Research Organisation (CSIRO). Australia's leading scientific research organisation. CSIRO has the diverse capability to coordinate, analyse and advise on complex socio-ecological information and technology advancement which is critical to the success of the Program.

Queensland Department of Environment and Science (DES). The Office of the Great Barrier Reef within the DES forms part of the Executive Steering Committee for the Reef 2050 Plan. DES also represents the Qld component in the joint field management program – established under the Intergovernmental Agreement for the Great Barrier Reef. Queensland Parks and Wildlife Service (QPWS), who co-manage the Reef with the Authority, will also be one of the primary users of data from the program and decision support tools generated.

Traditional Owners, Land and Sea Country Great Barrier Reef. Recognised as Partners, four Traditional Owner Members contribute with the program partners to form part of the governance group at both operational and executive levels of RIMReP. The Members provide guidance and advice on cultural, social, economic and other matters, engagement strategies and approaches and Traditional Owner issues relevant to achieving the RIMReP vision.



Conducting underwater manta tow to survey reef health and count crown-of-thorns starfish

(c) Commonwealth of Australia (GBRMPA), D. Schultz