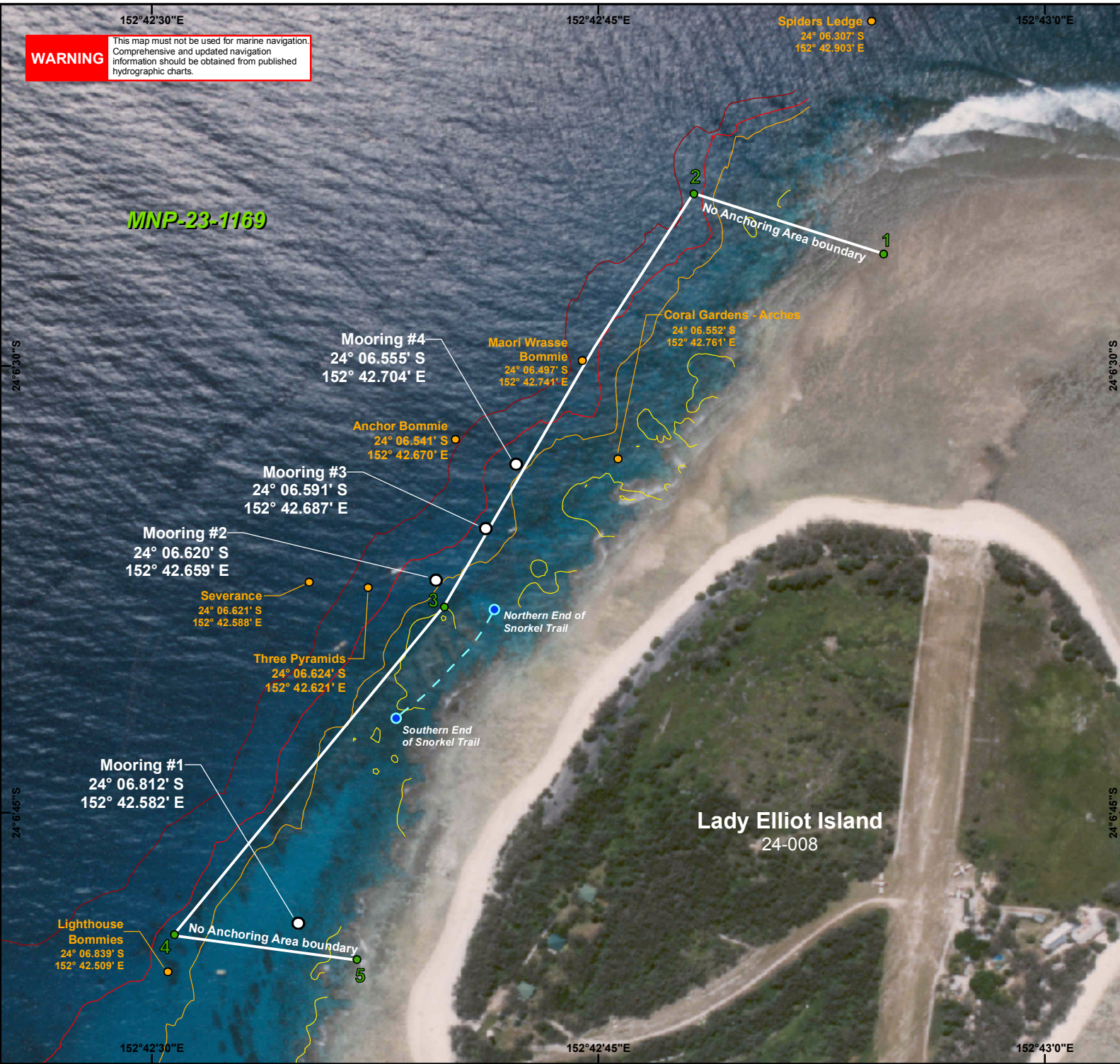


**WARNING**

This map must not be used for marine navigation. Comprehensive and updated navigation information should be obtained from published hydrographic charts.

**MNP-23-1169**



**Spider's Ledge**  
 24° 06.307' S  
 152° 42.903' E

**Mooring #4**  
 24° 06.555' S  
 152° 42.704' E

**Maori Wrasse Bommie**  
 24° 06.497' S  
 152° 42.741' E

**Coral Gardens - Arches**  
 24° 06.552' S  
 152° 42.761' E

**Anchor Bommie**  
 24° 06.541' S  
 152° 42.670' E

**Mooring #3**  
 24° 06.591' S  
 152° 42.687' E

**Mooring #2**  
 24° 06.620' S  
 152° 42.659' E

**Severance**  
 24° 06.621' S  
 152° 42.588' E

**Three Pyramids**  
 24° 06.624' S  
 152° 42.621' E

**Northern End of Snorkel Trail**

**Southern End of Snorkel Trail**

**Mooring #1**  
 24° 06.812' S  
 152° 42.582' E

**Lighthouse Bommies**  
 24° 06.839' S  
 152° 42.509' E

**Lady Elliot Island**  
 24-008

# Site Management Arrangements

## Lady Elliot Island (24-008)



**Australian Government**  
 Great Barrier Reef  
 Marine Park Authority



**Queensland Government**  
 Queensland Parks and Wildlife Service

**No Anchoring Area - markers**

- 1 24° 06.437' S 152° 42.910' E
- 2 24° 06.403' S 152° 42.803' E
- 3 24° 06.634' S 152° 42.664' E
- 4 24° 06.818' S 152° 42.512' E
- 5 24° 06.832' S 152° 42.615' E

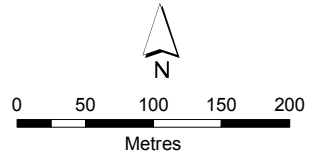
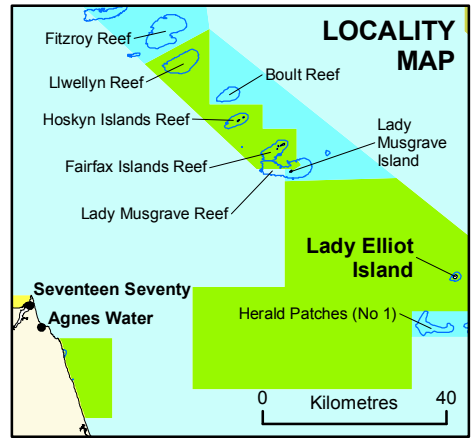
**Locations**

- Vessel Mooring
- Dive Site Marker

**Depth (m)**

- 3
- 9
- 13
- 17

NB: 13 to 15 metres is equivalent to 7 to 8 fathoms.



Map Projection: Unprojected Geographics  
 Horizontal Datum: Geocentric Datum of Australia 1994  
 Imagery: Rectified QPWS Aerial Photograph  
 SDC050625 - September 2007