

# REEF 2050 INTEGRATED MONITORING AND REPORTING PROGRAM Annual Business Plan 2024-25



© Commonwealth of Australia 2025.

Published by the Great Barrier Reef Marine Park Authority

The Reef 2050 Integrated Monitoring and Reporting Program Annual Business Plan 2024-2025 is licensed by the Commonwealth of Australia for use under a Creative Commons

By Attribution 4.0 International licence with the exception of the Coat of Arms or the Commonwealth of Australia, the logo of the Great Barrier Reef Marine Park Authority, any other material protected by a trademark, content supplied by third parties and any photographs. For licence conditions see:

<http://creativecommons.org/licences/by/4.0>



While all efforts have been made to verify facts, the Great Barrier Reef Marine Park Authority takes no responsibility for the accuracy of information supplied in this publication.

Aboriginal and Torres Strait Islander readers are advised this publication may contain names and images of deceased persons.

**This publication should be cited as:**

Great Barrier Reef Marine Park Authority 2025, *Reef 2050 Integrated Monitoring and Reporting Program Annual Business Plan 2024-2025*, The Reef Authority, Townsville.

All images © Commonwealth of Australia (Reef Authority) 2025

Comments and questions regarding this document are welcome and should be addressed to:



**Australian Government**

**Great Barrier Reef  
Marine Park Authority**

Great Barrier Reef Marine Park Authority  
235 Stanley Street  
(PO Box 1379)  
Townsville QLD 4810, Australia

Phone: (07) 4750 0700  
Fax: (07) 4772 6093  
Email: [info@gbrmpa.gov.au](mailto:info@gbrmpa.gov.au)  
[www.gbrmpa.gov.au](http://www.gbrmpa.gov.au)

The Reef Authority acknowledges the expertise, wisdom, and enduring connections that have informed the guardianship of the Reef for millennia. We pay our respects to the Traditional Owners as the first managers of this Land and Sea Country, and value their traditional knowledge which continues to inform the current management and stewardship of the Reef for future generations



# 1. Introduction

The [Intergovernmental Agreement on the Great Barrier Reef 2024](#) provides a framework for the Australian and Queensland governments to work together to protect the Great Barrier Reef. The agreement reflects the shared vision for the future outlined in the [Reef 2050 Long-Term Sustainability Plan](#) (Reef 2050 Plan) and renews the Australian and Queensland governments' commitment to protecting the Great Barrier Reef World Heritage Area, including its Outstanding Universal Value. The [Reef 2050 Integrated Monitoring and Reporting Program](#) (RIMReP or the Program) is a key foundational component of the Reef 2050 Plan, and is governed by senior representatives from government, science and research partners, and Traditional Owners.

The RIMReP partnership was initiated in 2014 to track progress against the Reef 2050 Plan, address knowledge gaps in monitoring and modelling, and equip Reef managers with essential information to guide resilience-based management. The Program's initiation involved a comprehensive review of existing Reef monitoring programs, identification of monitoring needs, and provision of recommendations for establishing a Reef knowledge system. The Program's design was completed in 2019, and the [RIMReP Business Strategy 2020-25](#) is the roadmap to guide the implementation phase. The Program is now ready to transition from implementation to a sustainable maintenance and continuous improvement phase to further enable evidence-based Reef management decisions that ensure the Reef's ongoing resilience.

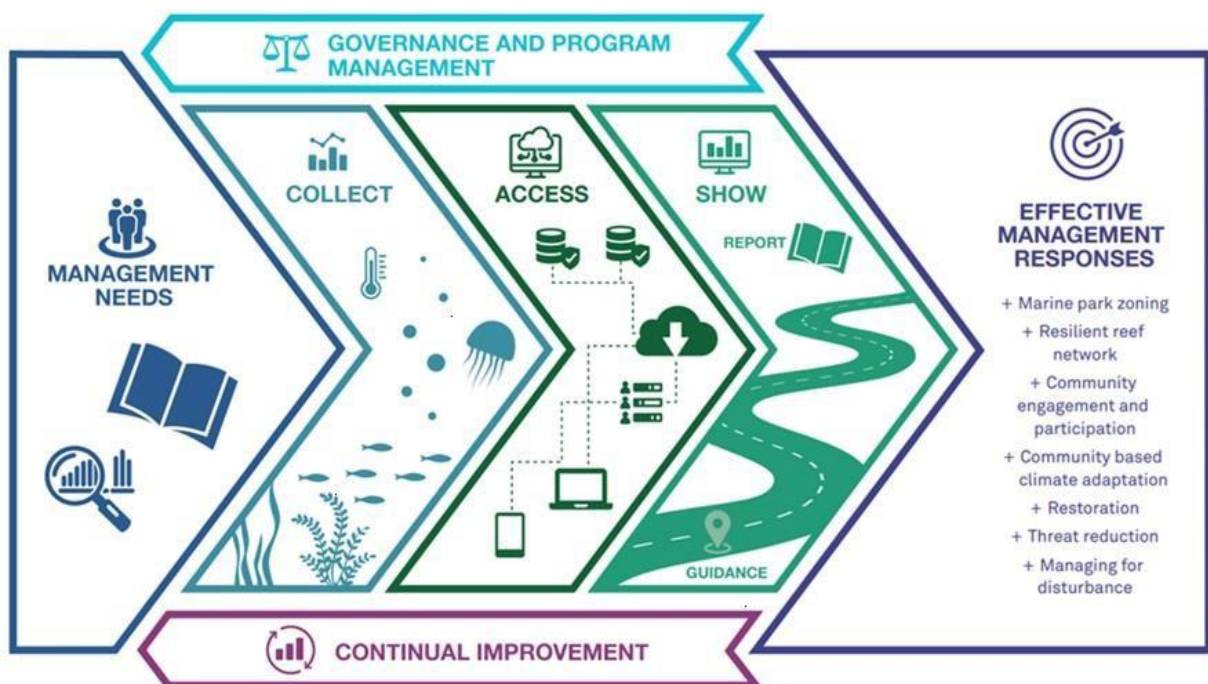
A key success for the Program has been the development of a fit-for-purpose Data Management System (DMS). The DMS is essential infrastructure needed to harvest and process core monitoring data sets that enable Reef managers and stakeholders to gain a greater understanding about the state and condition of the Reef. The DMS is a foundational service needed to support the Program's [Reef Knowledge System](#) (RKS). The redevelopment and delivery of the RKS is on track to be achieved by June 2025.

The [Outlook Report 2024](#) found the Great Barrier Reef Region's overall long-term outlook remains a future of continued deterioration due largely to climate change. While recent recovery in some parts of the ecosystem demonstrates that the Reef retains resilience, its capacity to tolerate and recover is compromised by a rapidly changing climate. The [Insights Report](#) informs future revisions of the Reef 2050 Plan, with the next revision due for release in 2026. A key consideration for the future revision will be development and implementation of a reporting framework for RIMReP to inform Reef 2050 Plan progress reporting. Development of the RIMReP Business Strategy 2025-2030 will align with the revised Reef 2050 Plan.

## 2. Focus for 2024-25

This Annual Business Plan outlines the activities and priority projects the Program will undertake in 2024-25 in alignment with the Program’s current Business Strategy (2020-25). Program partners will continue to work collaboratively to deliver value-for-money products and services of universal benefit to ensure a comprehensive and up-to-date understanding of the ecological, social, and cultural aspects of the Great Barrier Reef. Effort will be directed toward implementation and ongoing management of the DMS, significant enhancement of the RKS, and use of decision support tools to inform objective Reef 2050 reporting.

The RIMReP Delivery Framework (Figure 1) outlines seven priority areas that inform the Program’s Annual Operating Plans.



**Figure 1:** The RIMReP Delivery Framework integrates key activities to support adaptive management practices for Program partners.

The following activities and projects will continue to focus on the following key elements of the RIMReP Delivery Framework and broader Reef 2050 Program Management:

### Governance and Program Management

The Reef Authority provides delivery of Program Management Office (PMO) and governance support services. The PMO coordinates the implementation efforts of the RIMReP partnership between the Australian and Queensland governments, Traditional Owners, and key environmental science research agencies. The role of PMO is to maintain momentum, monitor progress and identify risks and opportunities.

Activity	Lead	Due
Development of RIMReP Business Strategy 2025-2030*	PMO, Reef Authority	June 2025
Evolve RIMReP governance towards sustainable maintenance and continuous improvement phase	PMO, Reef Authority	June 2025

*\*Draft in place with endorsement by all six RIMReP partners for publication in 2025-26FY.*

## Management Needs and Continuous Improvement

Management needs are the fundamental driver of the Program, informing all Program priorities. Priorities stem from legislative obligations, the Reef 2050 Plan and ongoing work over many years with experts and partners.

Activity	Contributors	Due
Provide information and data to support Reef 2050 evaluation and reporting requirements	Reef Authority, AIMS, DETSI, CSIRO	June 2025

## Collect

Management actions and reporting are reliant on robust data collected from critical monitoring programs, and emerging science and knowledge. Maintaining long-term monitoring and reporting programs supported by an integrated network of monitoring technology is a critical success factor for RIMReP.

Activity	Contributors	Due
Identification of monitoring gaps and prioritisation in alignment with the <i>Outlook Report 2024</i>	Reef Authority	June 2025

## Access

Adaptable management actions rely on the best available information and forecasting tools to improve Reef health and recovery. Access to timely and spatially explicit information is critical given the dynamic nature of the Reef. Future progress reporting against the Reef 2050 Plan will require large amounts of information to show the trend of key metrics.

Activity	Contributors	Due
Transition of the DMS to interim host and long-term planning for DMS sustainability	IMOS, AIMS, Reef Authority, DCCEEW	March 2025
Finalise integration of data sets into the DMS: <ul style="list-style-type: none"><li>- <i>Strong Peoples Strong Country</i> pilot project</li><li>- Eye on the Reef – Tourism Reef Protection Initiative</li><li>- Social and Economic Long-Term Monitoring Program (SELTMP)</li><li>- Sustainable use and benefits for marine (SEABORNE)</li></ul>	Great Barrier Reef Foundation, Reef Authority, AIMS, CSIRO	June 2025

## Show

The Reef Knowledge System will provide both an online interactive portal for Reef managers to access information layers that can be combined to improve decision making (e.g. planning, compliance, intervention activities). The RKS will link users to RIMReP partner systems and other useful Reef information.

Activity	Lead	Due
Redevelopment and delivery of the RKS	Reef Authority	June 2025

# The RIMReP Partnership

## **The Great Barrier Reef Marine Park Authority (Reef Authority)**

As the lead managing agency for the Reef and a member of the Executive Steering Committee for the Reef 2050 Plan, the Reef Authority collaborates with partners to protect the Reef for future generations.

## **Department of Climate Change, Energy, the Environment and Water (DCCEEW)**

DCCEEW forms part of the Executive Steering Committee for the Reef 2050 Plan and their involvement in the RIMReP partnership facilitates alignment with other Commonwealth initiatives. Their work spans environment protection, energy, climate change and heritage, including on-ground operations in Commonwealth national parks and Antarctica.

## **Australian Institute of Marine Science (AIMS)**

With a distinguished record of marine monitoring and scientific capability across Australia, particularly the Great Barrier Reef, the partnership with AIMS provides key monitoring information, links with other programs (e.g. the Reef Restoration and Adaptation Program) and access to relevant scientific information and technology expertise upon which the Program is based.

## **Integrated Marine Observing System (IMOS)**

IMOS operates observing equipment across Australia's coastal and open oceans. Their proven capability to deliver and manage oceanographic data assets and an integrated data management system will provide critical data and access to relevant scientific expertise upon which the Program is based.

## **Commonwealth Scientific and Industrial Research Organisation (CSIRO)**

Australia's leading scientific research organisation, CSIRO has the diverse capability to coordinate, analyse and advise on complex socio-ecological information and technology advancement which is critical to the success of the Program.

## **Queensland Department of Environment, Tourism, Science and Innovation (DETSI)**

The Office of the Great Barrier Reef within the DETSI forms part of the Executive Steering Committee for the Reef 2050 Plan. DETSI also represents the Qld component in the Joint Field Management Program – established under the Intergovernmental Agreement for the Great Barrier Reef. Queensland Parks and Wildlife Service and Partnerships (QPWS&P) who co-manage the Reef with the Reef Authority, will also be one of the primary users of data from the program and decision support tools generated.

## **Traditional Owners, Land and Sea Country Great Barrier Reef**

Recognised as Partners, four Traditional Owner members contribute with the program partners to form part of the governance group at both operational and executive levels of RIMReP. The members provide guidance and advice on cultural, social, economic and other matters, engagement strategies and approaches and Traditional Owner issues relevant to achieving the RIMReP vision



Australian Government  
Great Barrier Reef  
Marine Park Authority



Reef  
Authority

[REEFAUTHORITY.GOV.AU](http://REEFAUTHORITY.GOV.AU)