



Green Island Reef Location Site Arrangements

Green Island is a Sensitive Location with significant conservation, scientific research and indigenous cultural heritage values. Follow the special requirements for this location to help protect its sensitive values.

All Localities

- Sensitive Location
- Aircraft must remain above 1500 feet
- Vessels less than 35 metres can access and anchor
- Use public moorings where available
- Vessels greater than 35 metres and no more than 70 metres can anchor outside a Location (vessels may gain access if operating to a suitable mooring)
- A tender must be used to transfer passengers from a large ship to resorts, other vessels or reef pontoons
- Four vessel bookings per day (for tourism operators)

Locality 1

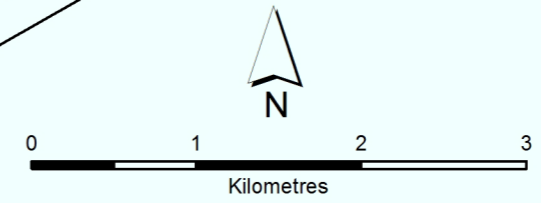
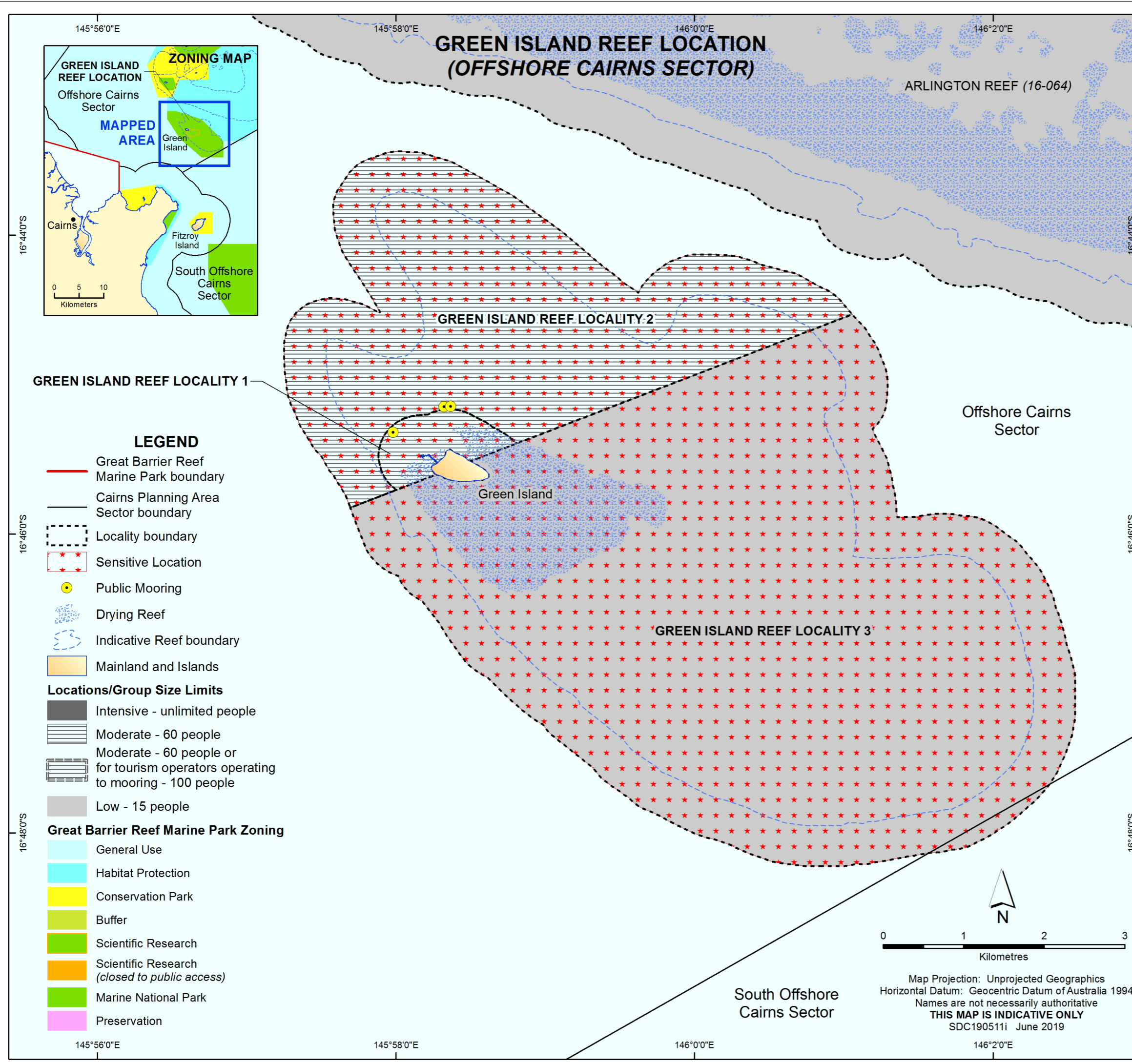
- Moderate Use Location
- Anchoring is allowed within 50 metres of a mooring
- No increase above the number of permitted private moorings on 22 June 1998

Locality 2

- Moderate Use Location
- 15 private moorings allowed

Locality 3

- Low use location
- No anchoring allowed within 50m of a pontoon
- * *Group sizes are including crew and excluding children under 4*
- * *The boundary of a 'Location' is generally 500 metres from the seaward edge of the reef*
- * *A primary mooring that also has northerly mooring are considered one mooring*
- * *Refer to the Cairns Area Plan of Management 1998 for more information*



Map Projection: Unprojected Geographics
Horizontal Datum: Geocentric Datum of Australia 1994
Names are not necessarily authoritative
THIS MAP IS INDICATIVE ONLY
SDC190511i June 2019

South Offshore
Cairns Sector