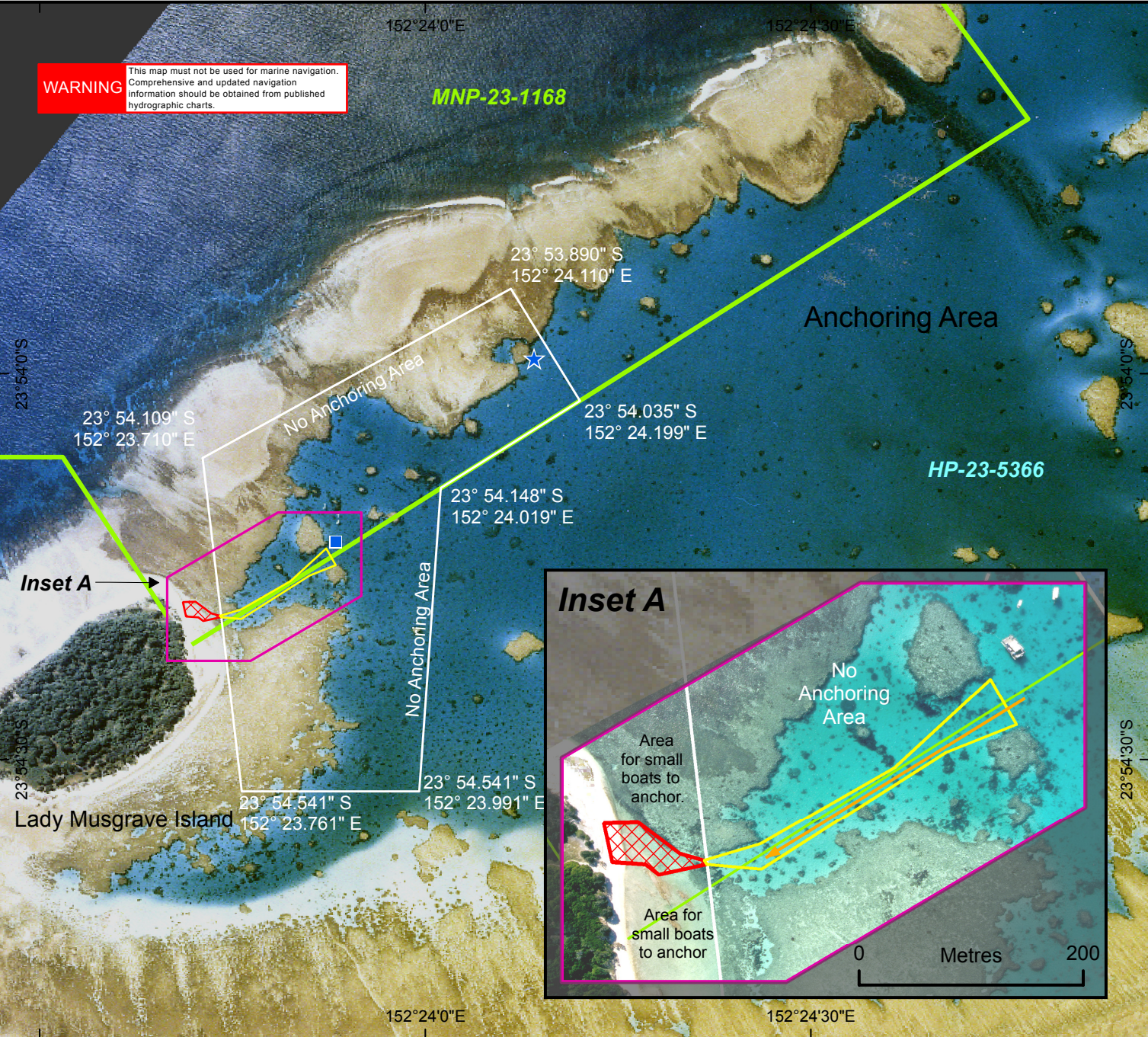


**WARNING**

This map must not be used for marine navigation. Comprehensive and updated navigation information should be obtained from published hydrographic charts.

MNP-23-1168

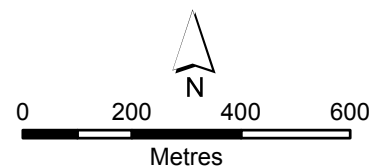
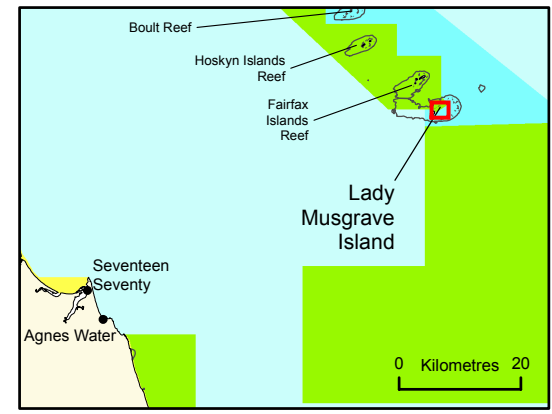
HP-23-5366



# Site Management Arrangements Lady Musgrave Island (23-082)



- ★ Approximate position of proposed pontoon
- Existing pontoon
- Marine National Park boundary
- Cay Access Channel
- ⊠ Vessel Loading Area



Map projection: Unprojected Geographic  
Horizontal Datum: Geocentric Datum of Australia, 1994  
SDC050625(c) 30 May 2006  
Data source: QPWS Rockhampton aerial photo.