

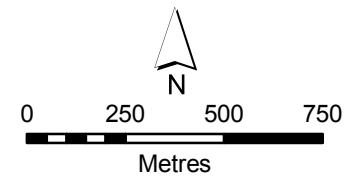
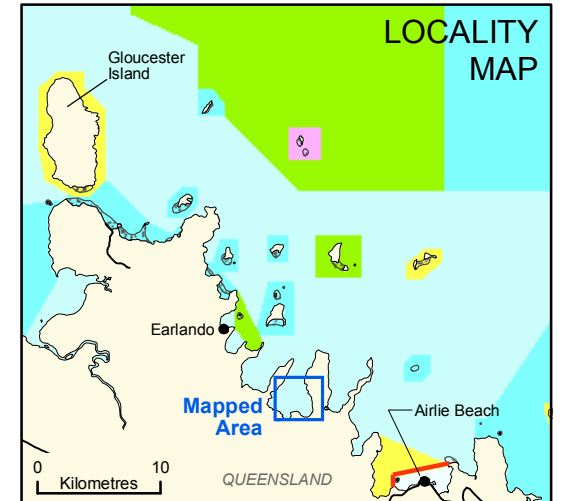
Setting 5 Protected Area *Double Bay East*



Australian Government
Great Barrier Reef
Marine Park Authority

Whitsundays Plan of Management
Setting 5 boundary

Note: the precise location of the Setting boundary occurs at the centre of the boundary line depicted on this map.



Map projection: Unprojected Geographics
Horizontal Datum: Geocentric Datum of Australia, 1994
Data source: GBRMPA aerial photo, 2005
Names are not necessarily authoritative
SDC060604f - 16 June 2006

WARNING This map must not be used for marine navigation. Comprehensive and updated navigation information should be obtained from published hydrographic charts.