

Number 8 January 1998

SEA COUNTRY

INFORMATION ON INDIGENOUS ISSUES OF THE CAPE YORK MARINE PARKS

Look Inside...

Cape York Marine Park - a quick look at the proposed new state marine park

More than zoning - management strategies for the Far Northern Section of the GBRMP

Indigenous fishing surveys - opportunities for communities managing their fisheries

Coastcare in action -cruise to Cape Melville

The eighth issue of Sea Country is written by staff of the Department of Environment (DoE), the Great Barrier Reef Marine Park Authority (GBRMPA) and Community Rangers of Cape York. If you have any questions contact one of the people listed below.

Draft plan released!

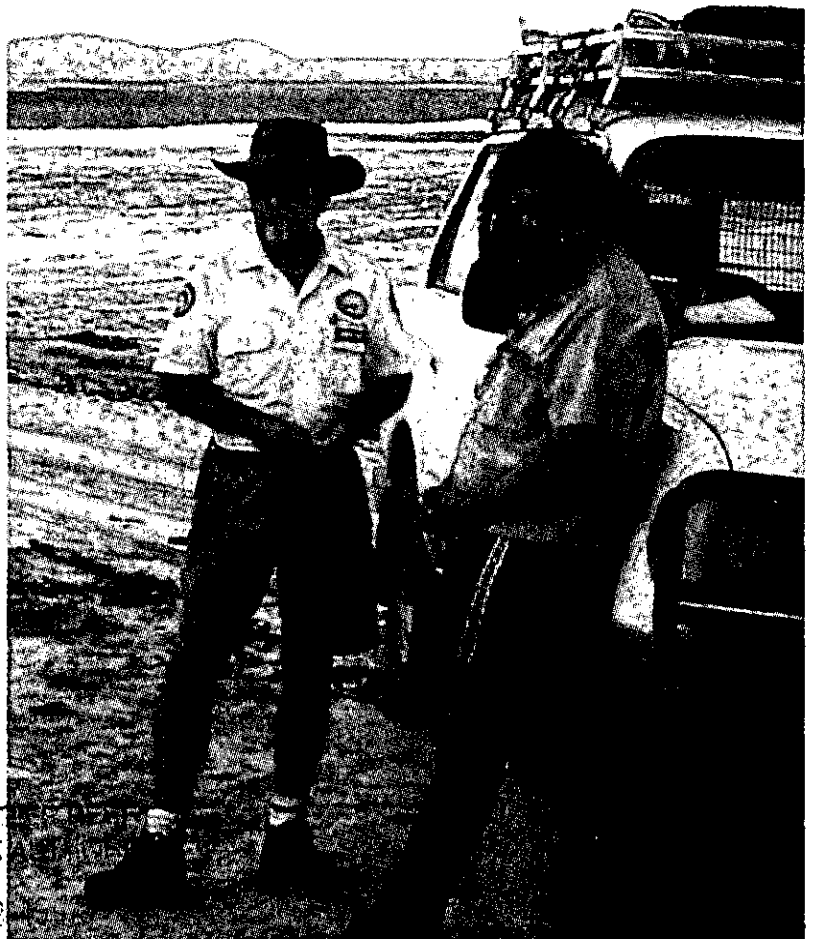
The draft plan for the Marine Parks of Cape York has been released for public comment. It is called **Marine Parks of Cape York**. Proposed zoning and management for the Far Northern Section of the Great Barrier Reef Marine Park and zoning for the proposed Cape York Marine Park.

You are invited to make comments on the draft plan until 27th February 1998.

Now is the time to make comments before the final plans are made.

You can write down your comments or use the post-back response leaflet on the draft plan. Or you can talk to one of the Marine Parks staff when they are in your area. You can also talk to your Community Rangers or call 1800 802 251 (GBRMPA) or (07) 4052 3043 (DoE) for more information.

Most people already know about the proposed changes to zoning and have been involved in their development. Not many people would yet be aware of the proposed zoning for the new state marine park or management proposals for the islands. It is important that everyone finds out about what is being proposed. Staff from GBRMPA and DoE will be visiting Hopevale, Cooktown, Coen, Lockhart River, Injinoo, Thursday Island and Horn Island to explain the proposals and discuss the proposed zoning maps.



Rangers on Quintel Beach

NOTICES

Need more details about planning for the marine parks of Cape York?

Talk to a Community Ranger or key person.

John Bowen

Alima Panuel

Muen (Shorty) Lifu

Phil Bowie

Gwen Toby

Phil Wallis

Jim Wallace

Abraham Omeenyo

Alison Liddy

James Creek

Conrad Michael

Rocky Gibson

George Monaghan

Illustrations by Lockhart River Art Gang:

David Michael - pages 2,3,6

Stephen Short - page 5

Vanessa Macumboy - page 4

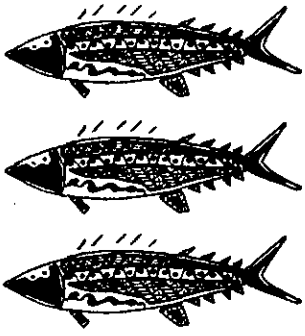
Marine Parks



GREAT BARRIER REEF
MARINE PARK AUTHORITY



Department
of Environment



Fisheries Surveys



Many Indigenous communities have concerns about fish stocks in local waters. Fishing provides a major source of food as well as being an important cultural practice. Everybody knows that if too many fish are taken, there won't be enough for tomorrow.

Indigenous communities see all kinds of fishing taking place in their sea country and yet are generally not involved in fisheries management. They say they need to be involved in fisheries management at all levels from community management at the local level to participation in management forums at regional and national levels.

In the past, information from fisheries studies has not flowed back to Indigenous communities. To help Indigenous communities undertake their own fisheries studies, Chika Turner was employed for a short time with the Department of Primary Industries (DPI Northern Fisheries) to develop a Subsistence Fishing Survey Package.

Chika sat down with the Aboriginal communities of Giangurra (Besse Point), Lockhart River, Kowanyama and Arukun to work out what communities wanted from a fisheries survey and how a survey could be adapted to meet the needs of different communities.

The Subsistence Fishing Survey Package provides a step by step guide to setting up a community fisheries survey project. It contains information on how to:

- negotiate with the community to design, set up and manage the project to suit their needs

- select and train community residents as project staff
- find out how many fish are being caught and by whom
- find out which fish are targeted throughout the fishing season
- find out how much effort goes into fishing and what sort of gear is used
- set up a data base to store survey information on the community
- apply for funding to undertake the project

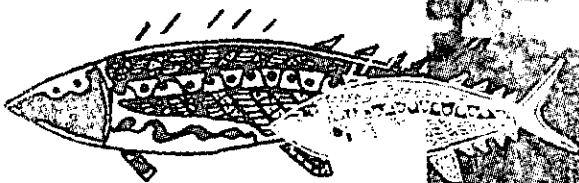
Communities will be able to apply for funding (or use CDEP) to undertake their own fishing studies based on this package. Communities will control the information they collect. Balkanu Cape York Development Centre and DPI Northern Fisheries will set up a computer system to help communities analyse their information. These results can then be used to help Indigenous communities to manage their own fishing catch and effort and also to get involved in fisheries management at regional and national levels.

The Subsistence Fishing Survey Packages will be available early next year from Chris Roberts at Balkanu (07) 4051 9077 or Linda Craig (07) 4052 3043 at Department of Environment and Sue Helmke at DPI on (07) 4052 9888.

This project, Indigenous Subsistence Fishing Survey Project, was funded by the Department of Environment.



Family fishing day on Claudie River





What's proposed for the Cape York Marine Park?

The draft plan for Cape York Marine Park (the state marine park) is now out for public comment.

The state marine park will run from the northern tip of Cape York along the whole eastern coastline to south of Murdoch Point. It will include estuaries up as far as the tide reaches. It will not include freehold, national park or DOGIT areas.

Estuaries

The marine park will provide some protection for estuaries and their mangroves. These areas will be zoned brown (Estuarine Conservation) which allows recreational and commercial fishing to continue.

Coastline and offshore areas

Along the coast, the intertidal areas are state marine park. These join the Great Barrier Reef Marine Park (GBRMP) and so will mostly match the same zones as the GBRMP.

In some areas the zoning will be different. For example, the estuaries and intertidal areas will be brown

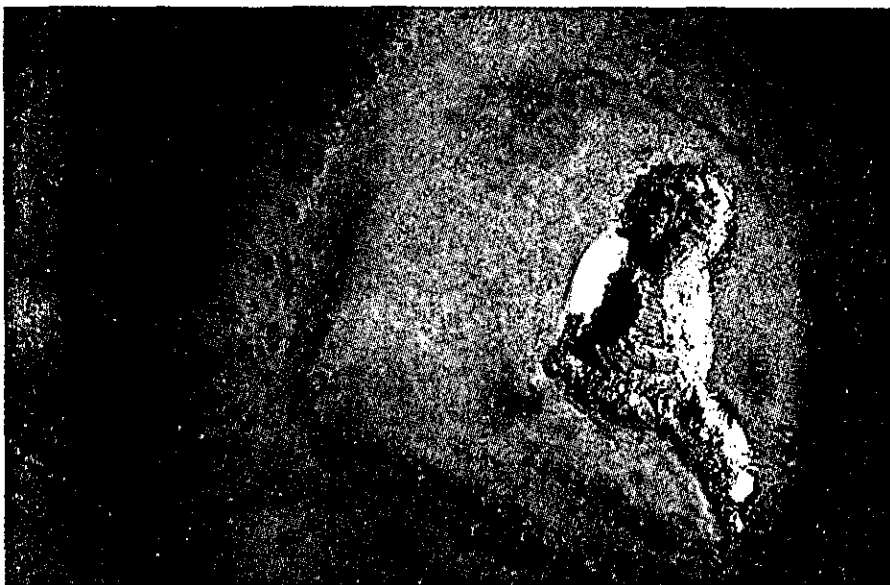
(Estuarine Conservation) zones while the adjoining GBRMP zones are green (National Park): parts of Temple Bay, Weymouth Bay, Lloyd Bay, Cape Direction - Round Point, Friendly Point - north of Cambell Point, north of Gorge Creek, Bathurst Bay - Cape Melville and Sth Barrow Point - Jeannie River.

Islands

Management of the 278 islands and cays is also being considered. The intertidal areas around the islands are part of the state marine park and will be zoned the same as the surrounding GBRMP. Some islands are very important for seabird and turtle nesting while others have important cultural sites.

The most sensitive islands will be closed to access by everyone except traditional claimants for the whole year: Combe Island, Stapleton Island, Sand Banks No 7 and 8, Quoin Island, Pelican Island, Wallace, Chomondeley Islet, Milman Islet, Raine Island, MacLennan Cay and Moulter Cay.

Some islands will be closed only during the main seabird and turtle nesting season (1 September to 31 March). Other islands are suitable for visiting and will be made available for nature-based recreation and tourism. There will be a limit on numbers allowed to visit some islands.



Quoin Island





What next?

This is a brief summary of what's in the draft plan. It is important that you see the details of the proposed zoning and management and look at the maps. You can comment on whether or not you agree with the proposals until 27th February 1998.

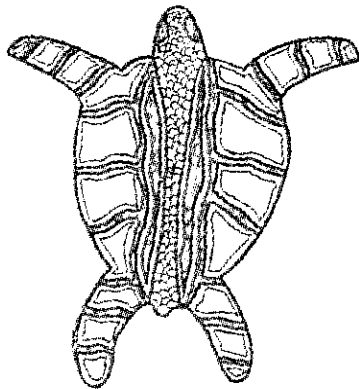
management between the Department and traditional custodians of these areas (together with similar arrangements with GBRMPA) will be looked at next.

The state government recognises that Aboriginal people have a strong interest in management of estuaries and islands in their sea country. Opportunities for cooperative

Stapleton Island



Cape Melville Coastcare project



Coastcare is a funding program that offers indigenous people opportunities to get involved in planning and managing their sea country.

In May, traditional owners of Flinders Islands to Cape Melville/Starcke took part in a visit to country on board the marine parks vessel, Kerra Lyn. There was a full boat! Margaret Bassini, Paul Flinders, George Monaghan (Cape Melville to

Stanley Island), Willy Michael (Cape Bowen to Lookout Point), Roger Hart, Paul Hart, (Barrow Point), Jimmy Jacko (Starcke River) and Michael McGreen (Cape Bowen and Lookout Point) took part in the trip. With DoE and Cape York Land Council staff, they visited sites, recorded peoples' stories, looked for (and found) new sites and made a video of the places and people for those who couldn't come along. They visited Barrow Islands, Red Point, Noble Island, Bewick Island, Howick Island, Jeannie River and Starcke River. The site recording will be used in future planning and management for this area so that sites can be properly looked after. Everyone agreed that it was a great trip. As well as working hard, there was time for lots of cuppas and a bit of relaxation.

If you want more information about Coastcare, call Jana Kahabka, Indigenous Coastcare Facilitator on (07) 4052 3043.



Photo: Left to right, Roger Hart, John Halloran (CYLC), Willy Michael and Margaret Bassini recording (and videoing) the coast.



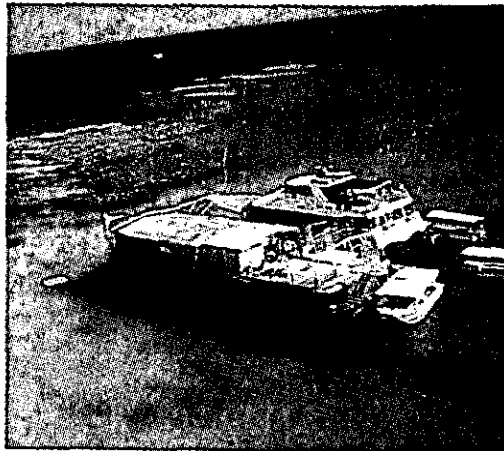


Far Northern Section

What's in the Draft plan besides zoning?

In addition to zoning, there are other ideas for managing the Far Northern Section of the Marine Park. These ideas include strategies that will:

- keep parts of the Far Northern Section free of large tourist operations, pontoons and other fixed structures
- prevent tourist operators from using any one place for more than



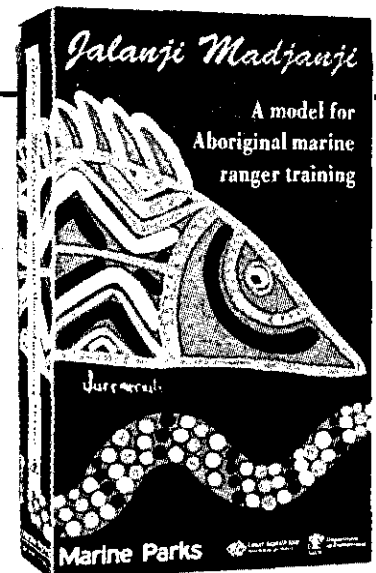
about 50 days in one year (in most of the Far Northern Section)

- confine cruise ship anchorages to certain places
- provide for Aboriginal and Torres Strait Islander people to visit their traditional reefs and waters in the marine park according to their custom and tradition
- develop plans of management for areas of the marine park jointly with traditional custodians and DoE
- protect places of cultural importance, including traditional sites and historic sites
- protect species such as dugongs, turtles and seabirds as well as their nesting and feeding grounds

These strategies are detailed in the Draft Plan. Please make sure you are aware of the details or talk to Marine Parks staff.

New Video!

Jalanji Madjanji A model for Aboriginal marine ranger training is a 15 minute video produced by DoE. It encourages other agencies to offer training for Indigenous rangers but it also explains what's involved in being a marine ranger and what sort of on-the-job training you need after TAFE. Copies will be sent to training and land management agencies. If you would like one, please contact Julie Swartz at DoE on (07) 4052 3043.



Who's who?

•With all this planning, there's no room for Community Ranger Views in this issue - but it will be back next issue...

•Apologies to Chika Turner for comments made in the last SeaSpy. No offence was intended, Chika.

•Did you see dugongs at Laura this year? Students from Laura, Lakeland, Bloomfield River and Yarrabah schools created some deadly posters about dugong conservation. They were displayed at the Laura Festival for all to see. Great work!



Lockhart River Art Gang (who supply the illustrations for Sea Country) had their first major art exhibition in the Cairns Regional Art Gallery recently. 'Ngana nyikana' (us painting) displayed 45 pieces of work (many related to sea country) by 10 talented young artists.

*Congratulations
Art Gang!!!*



Mark Connell

Hi, I'm a new face. I am from Brisbane where I studied marine and fisheries biology at uni. I have lived in far northern Queensland for 11 years. I worked for DPI Fisheries where I did research on barramundi, threadfin salmon, coral trout and the effects of prawn trawling on the reef. This meant that I had to spend many months working in Shelburne Bay. I am also a keen diver and have worked on many dive boats in my spare time. Now I am with DoE Coastal Management working as a planner. I have been assessing environmental impact statements for new developments (looking at their potential impacts) and getting into the field as much as possible. I have helped with Crown of Thorns starfish surveys and also routine marine parks patrols. Now I am taking over from Robin Clark to complete the state Cape York Marine Park plan so I'll be seeing you soon.



Bernie Singleton judging some of the dugong posters at Laura

Julie Swartz

Yes, its true - I am from Toowoomba!

I began work in Victoria in marine education. I taught adults and kids about the sea to make them aware of marine conservation. I



also taught in the aquarium at GBRMPA and then I travelled for two years to explore different cultures (and try different jobs - I was a nanny, security guard and a guide in another fish tank...)

I have been at DoE in Cairns for nearly 5 years - I am an education officer for marine parks. The best thing about my job is the chance to work with some special people - community rangers, Elders, liaison staff and other people working on indigenous issues. I find that when working with indigenous people, we learn from each other as we help others learn more about looking after sea country, both whitefella-way and bama-way. The worst thing about my job is that I get stuck in the office....

FURTHER



INFORMATION

For further information about planning the marine parks, talk to Leanne Sommer or Ross Williams at GBRMPA on (07) 4750 0700 or Frank Gleeson at DoE on (07) 4052 3043.

We welcome your contributions to Sea Country - talk to Julie Swartz at DoE on (07) 4052 3043.

These articles are the views of the authors and do not necessarily represent the views of GBRMPA or DoE.