

# **LATENCY OF TOURISM PERMITS IN THE GREAT BARRIER REEF MARINE PARK**

**AUDIT FOR THE YEAR 2000**



**Tourism and Recreation Group  
December 2001**



## **DISCLAIMER**

**The information provided in this Audit is for information and discussion only, and should not be used for business purposes.**

Source: Environmental Management Charge and Permits Databases held by GBRMPA.

## **OVERVIEW**

Latency of tourism permits refers to the number of unused or under-used tourism permits that have been issued by the Great Barrier Reef Marine Park Authority (GBRMPA).

To determine the extent of this latency, the GBRMPA's Tourism and Recreation Group conducted an audit for the year 2000. This involved analysing data from the Environmental Management Charge returns database and the Marine Parks permits database.

In the year 2000, 730 tourism operators were permitted to operate in the Marine Park, they held 910 permits and were permitted to operate 1492 vessel/aircraft. The majority of permits were issued for 6 years and allowed access to the entire length of the Marine Park.

For most types of tourist program permits there is no set limit on the number that can be granted by the Great Barrier Reef Marine Park Authority. However, as a result of implementation of the Cairns Area and Whitsundays Plans of Management and some other policy decisions, there are some types of tourism access which have been capped and which can no longer be granted by the GBRMPA. These permits can however be transferred (traded) by the permittee.

The Latency Audit showed that in the year 2000:

- the greatest amount of latency was in areas where there was low tourism demand;
- implementation of the Cairns Area and Whitsundays Plans of Management was a good initial step to reducing latency in these two high tourism demand areas;
- there was a significant amount of latency in all the types of 'capped' permits examined; and
- very few of these latent 'capped' permits were transferred (traded) during the year.

It is latency in 'capped' tourism permits that is of most immediate concern. For the major types of capped permits in the Cairns Area and the Whitsundays, about 20% of the endorsed vessels/aircraft were not operated at all in the year 2000 and about another 20% were rarely used. These latent permits could have been taken up by new operators wishing to establish a business or by existing operators wishing to expand, however very few of these latent permits were traded in 2000 and thus remained latent.

The GBRMPA, in consultation with the Association of Marine Park Tourism Operators (AMPTO) and the Tourism and Recreation Reef Advisory Committee (TRRAC), is considering appropriate latency control measures.

## **INTRODUCTION**

The Great Barrier Reef Marine Park extends for over 2000 kilometres along the east coast of Australia and includes more than 2900 coral reefs, 900 tropical islands and a diverse array of marine life. The Great Barrier Reef Marine Park Authority (GBRMPA) is responsible for management of the Great Barrier Reef Marine Park.

The Marine Park is a multiple use area that supports a range of traditional, commercial and recreational interests. Tourism has become the largest commercial activity on the Reef attracting more than 1.6 million visitors per year. Tourism operations in the Great Barrier Reef include day tours, extended tours, charter trips, cruise ships and bareboating. Management of tourism in the Marine Park is complex, requiring a range of management tools to protect the reef including legislation and enforcement, zoning plans, plans of management and permits. To carry out tourism activities in the Marine Park companies or individuals require a Marine Parks permit.

The Great Barrier Reef Marine Park Authority has been issuing tourism permits since the early 1980's. On average, approximately 350 tourist program permits are issued each year. In the year 2000, there were:

- 730 tourism operators permitted to operate in the Marine Park,
- 910 current tourism program permits, and
- 1492 primary vessels or aircraft permitted to be operated in the Marine Park.

There was no consistent pattern to the number of permits held by an operation or to the number of vessels or aircraft permitted on each permit. On average each operator held 1.18 permits and was permitted to operate 1.33 vessels/aircraft (Appendix 1).

Most of the tourism permits are issued for 6 years and allow general access to the entire length of the Marine Park.

Over recent years, the Association of Marine Park Tourism Operators (AMPTO) has raised concern at the increasing 'latency' of tourism permits in the Great Barrier Reef Marine Park. Latency refers to the number of unused or under-used tourism permits that have been issued for use.

A certain amount of latency is necessary to allow for seasonal fluctuations and variations in demand and to provide for growth in an operation. However, latency raises two main concerns:

- Unsustainable growth - this could be a problem when a large number of latent permits are activated in the one area. This increase in use could possibly exceed sustainable levels, in terms of the social and physical environment as well as the commercial well being of existing tourism operators.
- Hoarding or speculating on tourism permits - this is a problem particularly where new tourism permits are 'capped' (i.e. no longer available from the GBRMPA ). If unused tourism permits are not being traded by existing permit holders, then tourism is unable to grow within sustainable levels.

The GBRMPA first addressed latency through the Cairns Area and Whitsundays Plans of Management. All operators seeking to retain daily access to these popular tourism

areas were required to demonstrate a reasonable history of use. As a result of this process, known as the ‘Blue Forms’ process, unsuccessful operators were generally limited to 50 days access per year to each planning area with a requirement to book.

The ‘Blue Forms’ process was not applied to aircraft or bareboats, as alternative management strategies were being put in place (e.g. aircraft landing areas and bareboat accreditation).

The amount of tourism use that was permitted in these two planning areas prior to the introduction of the Plans of Management and undertaking the ‘Blue Forms’ process is not accurately known and it is therefore only possible to estimate the amount of latency that has been removed. It can be assumed, however, that most vessels/aircraft were previously permitted to regularly access one or both of these planning areas as part of a reef-wide Marine Parks permit.

The data presented in the table below focuses on the amount of permitted daily use that remains in these two areas following completion of the ‘Blue Forms’ process.

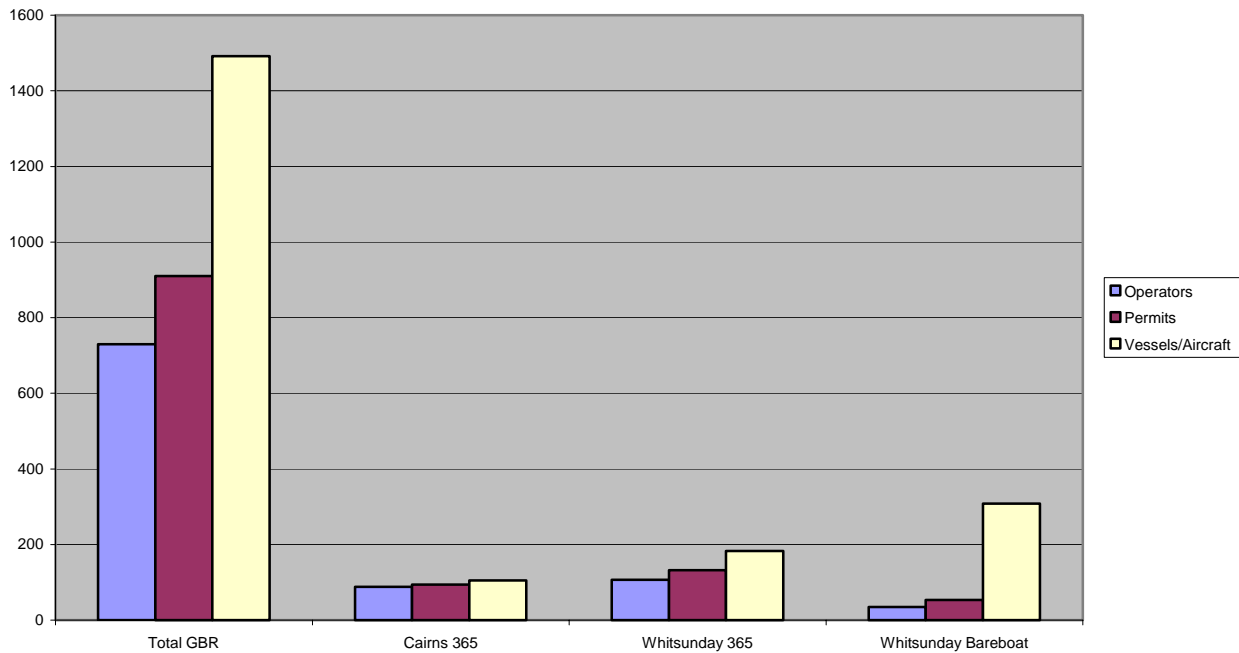
In summary the ‘Blue Forms’ process was successful at significantly reducing latency for crewed vessels permitted to operate daily in the Cairns Area and the Whitsundays:

- 88 operators now have all year anchoring access to the Cairns Area (Cairns 365). This is 12% of all permitted operators; and
- 107 general tourism operators now have all year access to the Whitsundays Area (Whitsundays 365). This is 15% of all permitted operators.

### ***Outcomes of the ‘Blue Forms’ Process in the Cairns Area and Whitsundays***

	Operators		Permits		Permitted Vessels/Aircraft	
	Number	% total GBR	Number	% total GBR	Number	% total GBR
Total GBR	730	100%	910	100%	1492	100%
Cairns 365	88	12%	94	10%	105	7%
Whitsundays 365	107	15%	132	14%	183	12%
Whitsundays Bareboat	35	5%	53	6%	308	21%

*Note: 2 operators (3 vessels) hold both Cairns 365 and Whitsundays 365.*



As a result of implementation of the Cairns Area and Whitsundays Plans of Management, and because of a range of formal policy decisions by the GBRMPA, there are now 22 types of tourism opportunities in the Marine Park where a capacity limit applies ('capped permits'). For example, capacity limits have been applied to everyday anchoring access to the Cairns Area, everyday access to the Whitsundays and the operation of a bareboat in the Hinchinbrook Area.

This audit of latency examines permitted and actual use for four categories of tourism use of the Marine Park:

- all tourism permits throughout the Marine Park;
- 'capped permits' which allow everyday anchoring access to the Cairns Area (Cairns 365);
- 'capped permits' which allow everyday access to the Whitsundays (Whitsundays 365);
- 'capped permits' which allow bareboat operations in the Whitsundays (Whitsundays Bareboat).

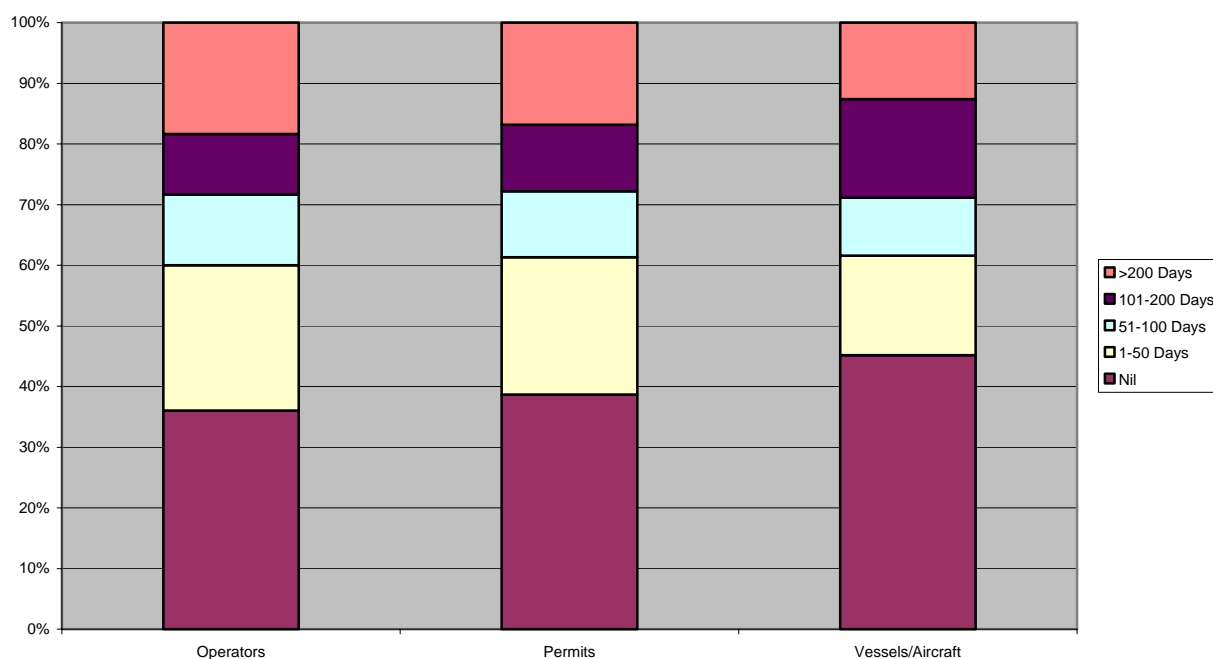
For each of these categories, latency is presented in terms of operators, permits and vessel/aircraft.

## LATENCY REEF-WIDE

Most tourism program permits allow access to almost all of the Marine Park. Latency of these permits can be of concern because, if this unused capacity was rapidly activated in one particular area, the cumulative effect of that increased use has the potential to threaten Marine Park values. The following table summarises tourism use of the whole Marine Park for all tourism permits.

### *Use of the Marine Park*

	Total Number	Use in 2000				
		Nil	1-50 Days	51-100 Days	101-200 Days	> 200 Days
Operators	730 (100%)	263 (36%)	175 (24%)	85 (12%)	73 (10%)	134 (18%)
Permits	910 (100%)	352 (39%)	206 (22%)	99 (11%)	100 (11%)	153 (17%)
Vessels/Aircraft	1492 (100%)	674 (45%)	245 (16%)	142 (10%)	243 (16%)	188 (13%)



Regardless of whether latency is examined by operator, permit or vessel/aircraft, the results are much the same. In broad terms:

- about 40% of permitted tourism use was not activated at all in 2000; and
- an additional 20% of permitted tourism use was active for less than 50 days in the year.

The amount of use that a random selection of 60 individual operators made of each of their permitted vessels/aircraft is provided in Appendix 2. This data shows that as well as there being some entirely latent operators, there are a number of operators who use only some of the vessels/aircraft that they are permitted.

One possible explanation for the under-utilisation of Marine Park permits could be that a large number of permits are transferred (traded) each year, thus interrupting the normal use of the transferred permit. In total, 106 Marine Park tourist program permits (12%) were transferred in 2000.

**Conclusion**

On a reef-wide basis there is a high proportion of completely latent permits and permits which are rarely used. This under-utilisation is not explained by a high turnover in Marine Park permits (transfers).

## LATENCY WHERE PERMITS ARE CAPPED

### 4.1. Introduction

As a result of implementation of the Cairns Area and Whitsundays Plans of Management, and because of a range of formal policy decisions by the GBRMPA, there are some tourism opportunities in the Marine Park where a capacity limit applies (i.e. 'capped' permits). A list of the types of tourism access where there is a capacity limit is provided in Appendix 3. Of the 22 types of 'capped' permits identified:

- 18 relate to the outcomes of the Cairns Area and Whitsundays Plans of Management;
- 3 relate to the management regime for the Hinchinbrook Area; and
- 1 relates to the reef-wide access of long range roving operations.

Analysis of latency where permits are capped focused on the three major types of endorsements<sup>1</sup>:

- Cairns Area 365 days per year anchoring access (Cairns 365);
- Whitsundays 365 days per year access (Whitsundays 365);
- Whitsundays bareboat operations (Whitsundays Bareboat).

Two possible explanations for latency in these endorsements were investigated, namely:

- that the endorsed vessel/aircraft was operated instead in other areas of the Marine Park (Appendix 5); and
- that the permit was transferred (traded) during the year, with the result that the original operator may have ceased operation and/or the new operator did not have time to establish normal operations (Appendix 6).

The number of latent permits traded also provides an indication of the extent of hoarding and speculation.

### 4.2. Cairns 365

A Cairns 365 endorsement allows the use of a vessel/aircraft in the Cairns Area for more than 50 days per year, with anchoring. It does not apply to those vessels/aircraft that are permitted to access the Cairns Area every day when using a mooring or pontoon or when gamefishing. Cairns 365 access was capped through the Cairns Area Plan of Management and eligibility to retain this access was determined through the 'Blue Forms' process.

The table below presents a summary of the use that was made of Cairns 365 endorsements in 2000. The raw data for endorsed vessels/aircraft is at Appendix 4(a).

---

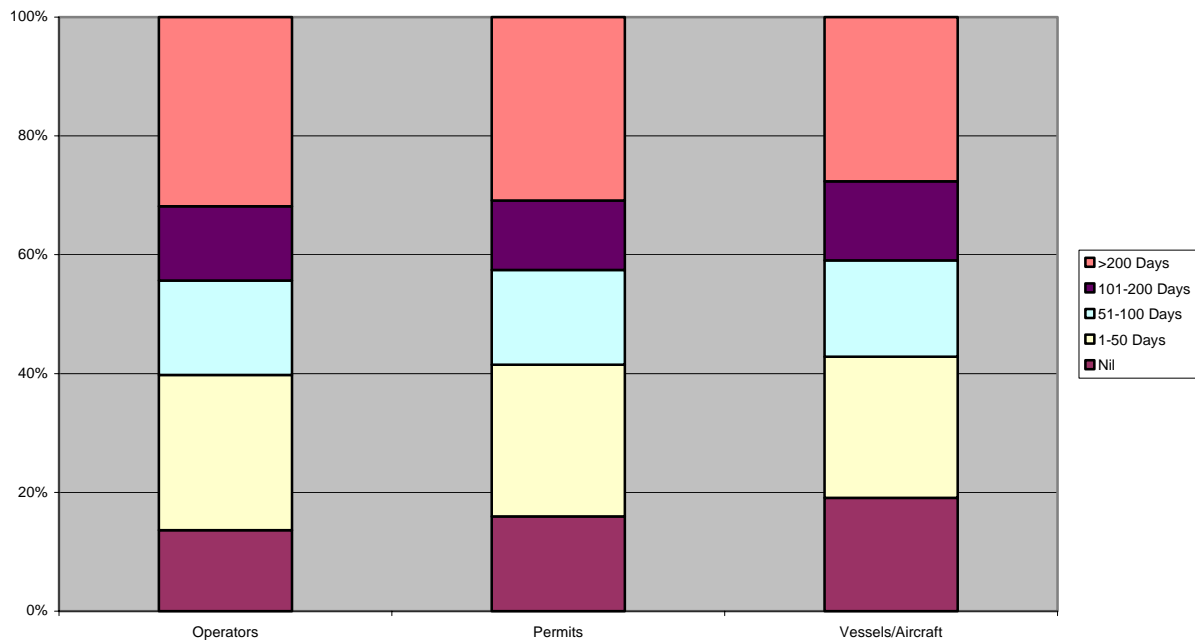
<sup>1</sup> Endorsement: Throughout this audit, the word 'endorsement' is used to describe any permitting instrument that grants the ability to undertake activities where there is a formal capacity limit (i.e. a 'cap'). An endorsement may be an entire Marine Parks permit, part of a permit, a letter of authorisation or a written exception to a standard permit.



**Use of Cairns 365 Endorsements\*.**

Cairns 365	Total	Use in 2000				
		Nil	1-50 Days	51-100 Days	101-200 Days	> 200 Days
Operators	88	12 (14%)	23 (26%)	14 (16%)	11 (12%)	28 (32%)
Permits	94	15 (16%)	24 (25%)	15 (16%)	11 (12%)	29 (31%)
Vessels/Aircraft	105	20 (19%)	25 (24%)	17 (16%)	14 (13%)	29 (28%)

\* The Cairns 365 endorsement does not apply to those vessels/aircraft that are permitted to access the Cairns Area everyday when using a mooring or pontoon or when gamefishing. There is no ‘cap’ on these types of permits.



In terms of each endorsed vessels/aircraft:

- 19% were not operated in the Cairns Area during 2000; and
- 24% were operated between 1 and 50 days.

The patterns of use were much the same when analysing use by each endorsed operator or use made of each permit that contained endorsements.

Most of the endorsed vessels/aircraft that were rarely, if ever, used in the Cairns Area were also rarely used elsewhere in the Marine Park (Appendix 5(a)).

Of the 45 Cairns 365 endorsements that were not used or were used for 50 days or less, 10 were transferred during 2000 (Appendix 6(a)).

## Conclusion

There remains a significant number of latent Cairns 365 permits. This degree of latency cannot be explained by the vessels/aircraft being operated in other areas of the Marine Park. Few of the latent permits were transferred.

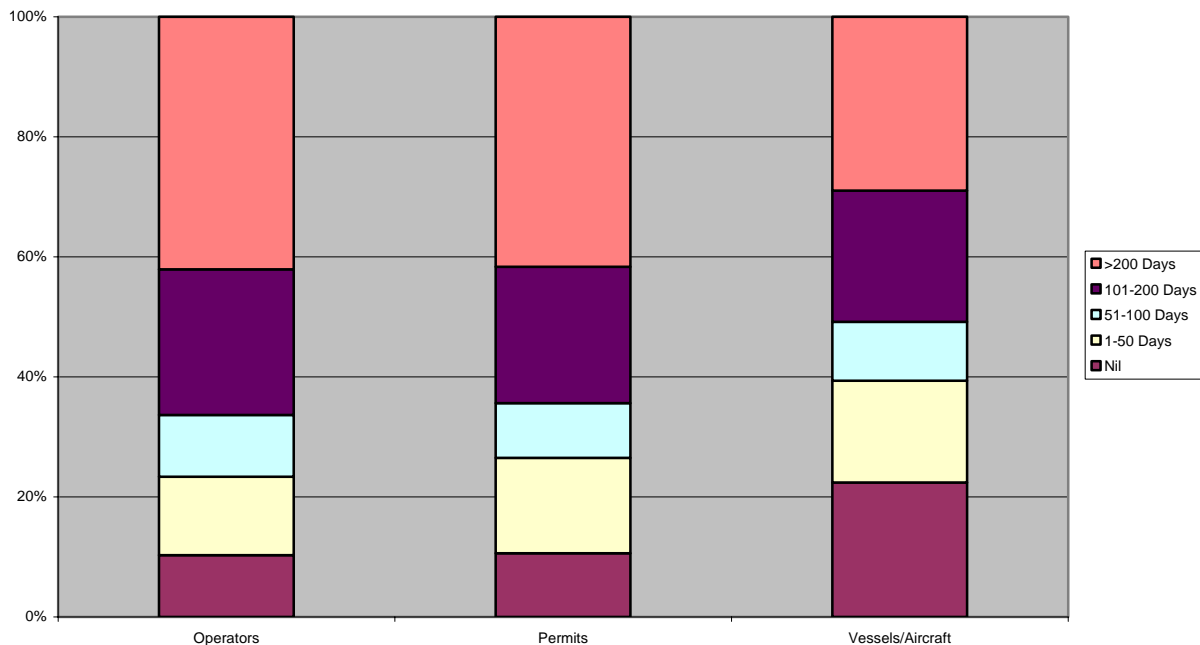
### 4.3. Whitsundays 365

A Whitsundays 365 endorsement allows the use of a crewed vessel/aircraft in the Whitsundays for more than 50 days per year. It does not include the operation of a bareboat. Whitsundays 365 access was capped through the Whitsundays Plan of Management and eligibility to retain this access was determined through the 'Blue Forms' process.

The table below presents a summary of the use that was made of Whitsundays 365 endorsements in 2000. The raw data for endorsed vessels/aircraft is at Appendix 4(b).

#### *Use of Whitsundays 365 Endorsements.*

Whitsundays 365	Total	Use in 2000				
		Nil	1-50 Days	51-100 Days	101-200 Days	> 200 Days
Operators	107	11 (10%)	14 (13%)	11 (10%)	26 (25%)	45 (42%)
Permits	132	14 (11%)	21 (16%)	12 (9%)	30 (23%)	55 (41%)
Vessels/Aircraft	183	41 (22%)	31 (17%)	18 (10%)	40 (22%)	53 (29%)



In terms of endorsed vessels/aircraft:

- 22% were not operated in the Whitsundays during 2000; and
- 17% were operated between 1 and 50 days.

Eighty three percent of the endorsed vessels/aircraft that were not operated in the Whitsundays were in fact entirely latent and were not operated anywhere in the Marine Park (Appendix 5(b)).

Of the 72 Whitsundays 365 endorsements that were not used or were used for 50 days or less, only 9 were transferred during 2000 (Appendix 6(b)).

### **Conclusion**

A significant proportion of Whitsundays 365 permits were latent in 2000. Only a small amount of the latency could be explained by the vessels/aircraft being used in another area of the Marine Park and only a very small proportion of these under-used permits were transferred.

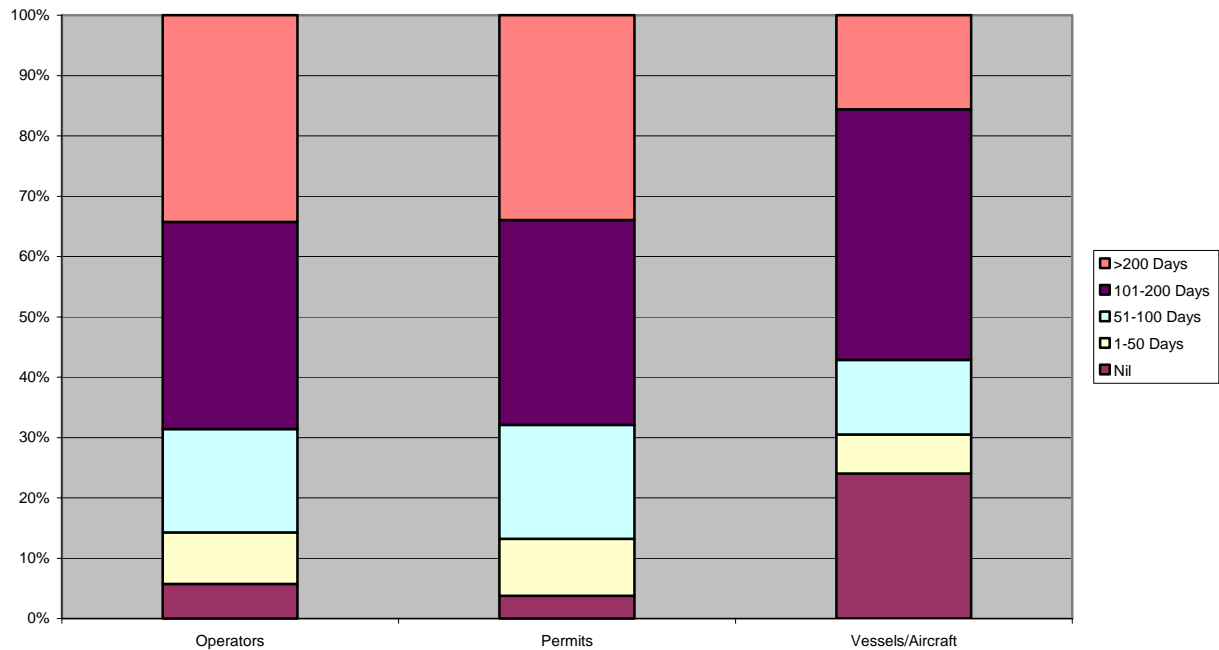
### **4.4. Whitsundays Bareboat**

A Whitsundays Bareboat endorsement allows the hire of a vessel greater than 6m for operation without master or crew in the Whitsundays area. The number of bareboats in the Whitsundays was capped at the current permitted level through the Whitsundays Plan of Management.

The table below presents a summary of the use that was made of Whitsundays Bareboat endorsements in 2000. The raw data for endorsed vessels is at Appendix 4(c).

#### ***Use of Whitsundays Bareboat Endorsements.***

Whitsundays Bareboat	Total	Use in 2000				
		Nil	1-50 Days	51-100 Days	101-200 Days	> 200 Days
Operator	35	2 (6%)	3 (9%)	6 (17%)	12 (34%)	12 (34%)
Permit	53	2 (4%)	5 (9%)	10 (19%)	18 (34%)	18 (34%)
Vessel	308	74 (24%)	20 (7%)	38 (12%)	128 (41%)	48 (16%)



In terms of each endorsed bareboat:

- 24% were not operated in the Whitsundays during 2000; and
- 7% were operated between 1 and 50 days.

Because each bareboat operator tends to be permitted to operate a large number of bareboats (average of 9 bareboats per operator), and many vessels are permitted on each permit, this degree of latency is not as obvious when analysing use by operator or by permit.

Only one of the Whitsundays bareboat endorsements that were not operated in the Whitsundays was operated in other areas instead. A proportion of the more actively used bareboat endorsements were operated occasionally elsewhere (Appendix 5(c)).

Of the 74 bareboat endorsements that were not operated in 2000, only 6 were transferred (traded) during that year (Appendix 6(c)).

### Conclusion

There were significant numbers of latent bareboat endorsements in the Whitsundays during the year 2000. Very few of these were traded during the year or operated anywhere else in the Marine Park.

## Numbers of Marine Park Operators, Permits and Permitted Vessels/Aircraft

(a) Distribution of permits amongst tourist operators.

Number of Permits Held	Number of Operators	% of Operators
1	618	84.7
2	77	10.5
3	16	2.2
4	10	1.4
5	6	0.8
>5	3	0.4
Total	730	100

Average number of permits per operator = 1.18.

(b) Number of permitted vessels/aircraft per operator<sup>2</sup>.

Number of Vessels/Aircraft Permitted	Number of Operators	% of Operators
1	549	75.2
2	89	12.2
3	30	4.1
4	12	1.6
5	10	1.4
6	6	0.8
7	8	1.1
8	4	0.5
9	3	0.4
10	2	0.3
>10	17	2.3
Total	730	100

Average number of permitted vessels/aircraft per operator = 1.33.

(c) Number of vessels/aircraft permitted per permit<sup>2</sup>

Number vessels/aircraft per permit	Number of permits	% of Permits
1	764	84.0
2	67	7.3
3	26	2.86
4	7	0.77
5	9	0.99
6	9	0.99
7	3	0.33
8	8	0.88
9	3	0.33
10	2	0.22
>10	12	1.32
Total	910	100

Average number of permitted vessels/aircraft per permit = 1.19.

<sup>2</sup> All hire craft and equipment for each hire operation was counted as one vessel.

## Use of the Marine Park by Operator – sample of raw data

Operator	Number of Vessels/Aircraft	Use of the Marine Park (Days)
Operator 1	1	70
	1	261
	1	0
Operator 2	1	0
Operator 3	26	0
	1	98
	1	259
	1	362
Operator 4	1	0
	1	16
	1	96
	1	104
	1	283
Operator 5	1	0
Operator 6	2	0
	1	46
	1	154
Operator 7	1	0
Operator 8	1	27
	1	227
	1	286
Operator 9	4	0
Operator 10	1	183
Operator 11	1	71
Operator 12	1	157
Operator 13	1	10
Operator 14	1	0
Operator 15	1	0
Operator 16	1	0
Operator 17	1	0
Operator 18	1	0
Operator 19	1	110
Operator 20	1	204
	1	242
	1	299
Operator 21	1	0
Operator 22	1	107
Operator 23	2	0
Operator 24	2	0
	1	204
Operator 25	1	17
Operator 26	1	246
Operator 27	2	0
Operator 28	3	0
Operator 29	1	1
Operator 30	1	295
Operator 31	1	0
Operator 32	1	58
	1	145
Operator 33	1	4
Operator 34	1	34

Operator	Number of Vessels/Aircraft	Use of the Marine Park (Days)
Operator 35	1	171
Operator 36	2	0
Operator 37	1	98
Operator 38	1	214
Operator 39	4	0
	1	62
Operator 40	5	0
Operator 41	1	95
Operator 42	1	0
	1	48
	1	181
	1	238
	1	338
Operator 43	1	183
Operator 44	1	0
Operator 45	1	114
	1	133
	1	142
	1	148
	1	168
	1	190
	1	194
Operator 46	3	0
Operator 47	1	269
Operator 48	1	99
Operator 49	16	0
	1	220
	1	318
	1	340
Operator 50	1	0
	1	246
Operator 51	7	0
	1	92
Operator 52	2	0
Operator 53	1	0
Operator 54	4	0
	1	112
	1	145
	1	199
Operator 55	1	0
Operator 56	1	261
Operator 57	1	0
Operator 58	1	365
Operator 59	2	0
	1	3
	1	5
	1	27
Operator 60	1	10
	1	228
	1	252

## Types of Access for Tourism Where There is a Capacity Limit

Endorsement Code	Type of Access	Number of Endorsed Vessels/Aircraft	Number of Endorsed Operators
<b>Cairns Planning Area</b>			
Cairns 365	Conduct of a tourist program using an aircraft or vessel in the Cairns Planning Area with greater than 50 days per year anchoring	105	88
Cairns Sensitive Location	Conduct of a tourist program in the Cairns Planning Area with greater than 50 days per year access to a specified Sensitive Location	38	24
Cairns Anchoring Locations	Conduct of a tourist program in the Cairns Planning Area with greater than 50 days per year anchoring at a specified Location	102	37
Cairns Group Size	Conduct of a tourist program in the Cairns Planning Area with access above the group size limit for a specified Location	47	26
Cairns Cruise Ship	Conduct of a cruise ship operation in the Cairns Planning Area with greater than 50 days per year access	1	1
Cairns Whale Watching	Undertake whale watching activities as part of a tourist program in the Cairns Planning Area	6	5
Cairns Mooring	Installation and operation of a mooring in the Cairns Planning Area	N/A	N/A
Cairns Facility	Installation and operation of pontoons in the Cairns Planning Area	N/A	N/A
<b>Whitsunday Planning Area</b>			
Whitsundays 365	Conduct of a tourist program using an aircraft or a crewed vessel in the Whitsunday Planning Area with greater than 50 days per year access	183	107
Bowen Operations	Conduct of a Bowen operation in the Whitsunday Planning Area with greater than 50 days per year access	10	10
Whitsundays Setting 5	Conduct of a tourist program in the Whitsunday Planning Area with access to a setting 5 area	4	3
Whitsundays Group Size	Conduct of a tourist program in the Whitsunday Planning Area with access above the group size limit for a specified Setting Area	89	56
Whitsundays Bareboat	Conduct of a bareboat operation in the Whitsunday Planning Area	308	35
Whitsundays Whale Watching	Undertake whale watching activities as part of a tourist program in the Whitsunday Planning Area	27	7
Whitsundays Fishing	Undertake fishing activities as part of a tourist program in Marine National Park 'A' Zones in the Whitsunday Planning Area	15	11
Whitsundays Reef Walking	Undertake reef walking activities as part of a tourist program in the Whitsunday Planning Area except at Hardy Reef and at Black Island Reef	15	2
Whitsundays Mooring	Installation and operation of a mooring in the Whitsundays Planning Area outside setting 1 areas and the Hardy Reef Location	N/A	N/A
Whitsundays Facility	Installation and operation of a tourist facility in the Whitsunday Planning Area (pontoons, jetties, observatories) outside setting 1 areas and the Hardy Reef Location	N/A	N/A
<b>Hinchinbrook Planning Area</b>			
Hinchinbrook 365	Conduct of a tourist program using an aircraft or a crewed vessel in the Hinchinbrook Planning Area with greater than 50 days access in any 12-month period	50	46
Hinchinbrook Bareboat	Conduct of a bareboat operation in the Hinchinbrook Planning Area	15	2
Hinchinbrook Hire Operations	Conduct of a hire operation in the Hinchinbrook Planning Area	7	3
<b>Reef-wide</b>			
Long Range Roving Operation	Conduct of a Long Range Roving operation in the Marine Park.	32	31

## Use of Major Endorsements

### (a) Cairns 365

Number of Days Use	Number of Endorsed Vessels/Aircraft
0	20
4	1
5	1
6	1
8	1
10	1
20	1
21	2
22	1
23	1
26	1
29	1
31	1
32	1
33	1
34	2
36	2
38	1
44	1
45	1
46	1
47	1
50	1
51	2
54	3
55	1
56	2
62	1
68	1
70	2
71	1
72	1
83	1
85	1
89	1
106	1
107	2
109	1
126	1
134	2

Number of Days Use	Number of Endorsed Vessels/Aircraft
137	1
138	1
144	1
161	1
167	1
185	1
198	1
205	1
206	1
207	1
211	1
236	1
246	1
252	3
256	2
260	2
261	1
271	1
283	1
302	1
311	1
313	1
315	2
324	1
331	2
341	1
346	1
348	1
357	1
359	1

Total Days	
0	20 (19 %)
1-50	25 (24 %)
51-100	17 (16 %)
101-200	14 (13%)
>200	29 (28%)



## (b) Whitsundays 365

Number of Days Use	Number of Endorsed Vessels/Aircraft
0	41
1	4
2	2
3	1
5	5
11	2
12	2
19	1
20	2
21	2
22	1
24	1
25	1
27	2
28	1
32	1
33	1
43	2
51	1
52	1
57	2
58	1
61	1
63	1
64	1
70	1
71	1
76	2
82	1
84	1
89	1
90	1
94	1
96	1
102	1
103	2
105	1
111	1
113	1
114	1
121	1
125	1
126	2
130	1
132	1
138	1
143	2
145	1
151	2
156	1
157	1
163	1
164	1
166	2
167	3
170	1
171	1
181	1

Number of Days Use	Number of Endorsed Vessels/Aircraft
183	1
184	1
189	1
192	1
193	1
196	1
198	1
199	1
200	1
203	3
214	3
221	1
227	1
230	1
234	1
235	2
236	1
239	1
242	2
245	1
246	1
249	1
251	1
252	1
255	1
256	1
261	1
264	1
265	1
273	1
276	1
277	1
283	1
284	1
285	1
286	1
288	3
291	1
292	2
294	1
295	3
299	2
304	1
306	1
321	1
327	1
331	2
351	1
360	1

Total Days	
0	41 (22 %)
1-50	31 (17 %)
51-100	18 (10 %)
101-200	40 (22%)
>200	53 (29)

## (c) Whitsundays Bareboat

Number of Days Use	Number of Endorsed Vessels/Aircraft
0	74
1	1
7	11
8	1
12	1
15	2
18	1
19	1
25	1
26	2
27	1
30	1
31	1
32	1
35	1
42	1
43	1
44	2
53	2
55	1
56	1
57	1
58	1
63	2
65	1
67	4
74	1
76	2
78	1
80	1
81	1
84	1
85	2
86	2
88	1
89	1
91	2
92	1
94	1
95	1
96	1
97	2
98	2
99	2
106	1
107	1
108	2
109	1
111	4
112	1
113	1
114	1
116	2
118	1
120	1
122	2
123	2

Number of Days Use	Number of Endorsed Vessels/Aircraft
125	3
126	2
127	3
128	1
129	4
130	5
131	2
132	3
133	2
134	1
135	2
136	3
137	3
139	2
140	1
141	1
142	1
143	1
144	2
146	1
147	2
148	2
149	1
151	4
154	2
155	2
159	2
161	1
163	1
164	1
165	3
166	3
167	3
168	4
169	2
171	1
173	1
174	1
175	2
176	1
177	1
179	2
181	1
183	2
184	1
185	2
187	2
189	1
190	2
191	1
192	2
193	2
194	4
196	1
197	1
199	1
201	2

APPENDIX 4

Number of Days Use	Number of Endorsed Vessels/Aircraft
204	1
205	2
206	3
208	1
209	2
210	2
212	3
214	1
215	2
216	1
217	1
218	1
219	2
220	1
223	1
224	2
225	1
227	1
229	1
231	1
232	3

Number of Days Use	Number of Endorsed Vessels/Aircraft
235	1
237	1
239	1
242	1
243	2
247	1
252	1
259	1
265	1
282	1
287	1
352	1

Total Days	
0	74 (24 %)
1-50	20 (7 %)
51-100	38 (12 %)
101-200	128 (41 %)
>200	48 (16 %)

**Use of Endorsed Vessels/Aircraft Elsewhere in the Marine Park****(a) Cairns 365**

Number of Days Use of Endorsement	Number of Endorsed Vessel/Aircraft	Use Elsewhere in 2000				
		Nil	1-50 Days	51-100 Days	101-200 Days	> 200 Days
0	20	16 (80 %)	2 (10 %)	0 (0 %)	1 (5 %)	1 (5 %)
1-50	25	9 (36 %)	12 (48 %)	4 (16 %)	0 (0 %)	0 (0 %)
51-100	17	4 (23 %)	9 (53 %)	2 (12 %)	2 (12 %)	0 (0 %)
101-200	14	1 (7 %)	9 (65 %)	2 (14 %)	1 (7 %)	1 (7 %)
>200	29	18 (62 %)	10 (35 %)	1 (3 %)	0 (0 %)	0 (0 %)

**(b) Whitsundays 365**

Number of Days Use of Endorsement	Number of Endorsed Vessel/Aircraft	Use Elsewhere in 2000				
		Nil	1-50 Days	51-100 Days	101-200 Days	> 200 Days
0	41	34 (83 %)	1 (2 %)	2 (5 %)	2 (5 %)	2 (5 %)
1-50	31	12 (38 %)	9 (29 %)	3 (10 %)	3 (10 %)	4 (13 %)
51-100	18	11 (61 %)	7 (39 %)	0 (0 %)	0 (0 %)	0 (0 %)
101-200	40	15 (38 %)	18 (45 %)	2 (5 %)	5 (12 %)	0 (0 %)
>200	53	41 (77 %)	10 (19 %)	1 (2 %)	0 (0 %)	1 (2 %)

**(c) Whitsundays Bareboat**

Number of Days Use of Endorsement	Number of Endorsed Vessels	Use Elsewhere in 2000				
		Nil	1-50 Days	51-100 Days	101-200 Days	> 200 Days
0	74	73 (99%)	0 (0 %)	0 (0 %)	1 (1 %)	0 (0 %)
1-50	20	14 (70 %)	4 (20 %)	1 (5 %)	1 (5 %)	0 (0 %)
51-100	38	32 (84 %)	6 (16 %)	0 (0 %)	0 (0 %)	0 (0 %)
101-200	128	87 (68 %)	41 (32 %)	0 (0 %)	0 (0 %)	0 (0 %)
>200	48	26 (54 %)	22 (46 %)	0 (0 %)	0 (0 %)	0 (0 %)

**Transfers of Major Endorsements**

## (a) Cairns 365

Total No. of Endorsements Transferred	Use of Transferred Endorsement in 2000				
	Nil	1-50 Days	51-100 Days	101-200 Days	> 200 Days
13	6 (46 %)	4 (31 %)	1 (8 %)	2 (15 %)	0 (0 %)

(Total endorsed vessels/aircraft = 105)

## (b) Whitsundays 365

Total No. of Endorsements Transferred	Use of Transferred Endorsement in 2000				
	Nil	1-50 Days	51-100 Days	101-200 Days	> 200 Days
26	3 (13 %)	6 (23 %)	4 (15 %)	8 (30 %)	5 (19 %)

(Total endorsed vessels/aircraft = 183)

## (c) Whitsundays Bareboat

Total No. of Endorsements Transferred	Use of Transferred Endorsement in 2000				
	Nil	1-50 Days	51-100 Days	101-200 Days	> 200 Days
30	6 (20 %)	7 (23 %)	7 (23 %)	10 (34 %)	0 (0 %)

(Total endorsed vessels = 308)