

SUPERYACHT

GUIDE TO THE WHITSUNDAYS

PREPARED BY THE GREAT BARRIER REEF MARINE PARK AUTHORITY

CURRENT AS OF JANUARY 2018

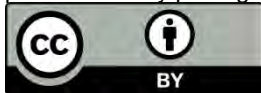


© Commonwealth of Australia 2018

Published by the Great Barrier Reef Marine Park Authority

ISBN 978 064 809 642 9

This document is licensed by the Commonwealth of Australia for use under a Creative Commons By Attribution 4.0 International licence with the exception of the Coat of Arms of the Commonwealth of Australia, the logo of the Great Barrier Reef Marine Park Authority, any other material protected by a trademark, content supplied by third parties and any photographs. For licence conditions see: <http://creativecommons.org/licenses/by/4.0>



While all efforts have been made to verify facts, the Great Barrier Reef Marine Park Authority takes no responsibility for the accuracy of information supplied in this publication.



A catalogue record for this book is available from the National Library of Australia

This publication should be cited as:

Great Barrier Reef Marine Park Authority 2018, *Superyacht guide to the Whitsundays: prepared by the Great Barrier Reef Marine Park Authority*, GBRMPA, Townsville.

Comments and questions regarding this document are welcome and should be addressed to:



Australian Government
Great Barrier Reef
Marine Park Authority

Great Barrier Reef Marine Park Authority
2–68 Flinders Street
(PO Box 1379)
Townsville QLD 4810, Australia

Phone: (07) 4750 0700
Fax: (07) 4772 6093
Email: info@gbmpa.gov.au
www.gbrmpa.gov.au

Contents

PART 1	3
Introduction	3
Purpose of your visit	3
Vessel length.....	3
Vessel categories	3
What category are you in?.....	4
Where you can go?	4
A - Recreational superyachts 35 metres or less.....	5
B - Recreational superyachts more than 35 metres to less than 70 metres	6
C - Recreational superyachts 70 metres and above	7
D - Commercial superyachts 35 metres or less	8
E - Commercial superyachts more than 35 metres to less than 70 metres	9
F - Commercial superyachts 70 metres and above.....	11
PART 2	14
Where you can go	14
Marine Park Zoning	14
Whitsundays Plan of Management	15
Settings	15
Sensitive areas.....	16
Anchoring and mooring	17
What activities you can do.....	19
How to apply for a permit.....	22
Recreational international visitors entering Australia.....	23
Pest Management	23
PART 3	25
Definitions	25
Useful Weblinks.....	26
Map 1 – Whitsundays Plan of Management Detailed Overview.....	28
Map 2 – Whitsundays Plan of Management Motorised Water Sports Areas	29

Please note the electronic version of this guide includes hyperlinks to websites that contain additional helpful information. External links are identified by an asterisk symbol *.

PART 1

Introduction

A **superyacht** is a high-value, luxury sailing or motor vessel in use for sport or pleasure. They are a great way to enjoy the Great Barrier Reef. The following information package has been tailored to assist with how you can visit and enjoy the [Whitsunday Planning Area](#) when aboard a superyacht.

For information on visiting areas outside of the Whitsundays, visit the [Great Barrier Reef Marine Park Authority website](#)*.

“Superyacht Australia see this guide as an excellent information tool for visiting superyachts and commend this initiative.” Superyacht Australia 2017

Purpose of your visit

Why you are here makes a difference.

If you are providing transport, accommodation or services for tourists, guests or other persons who have paid for passage on, or the charter of, the vessel, then you are a commercial superyacht. Commercial superyacht operations require a permit to operate in the Marine Park. See [Part 2 – How to obtain a permit](#) to find out more.

All other use of a superyacht is considered to be recreational and do not require a permit.

Vessel length

The length of a vessel determines where it can go in the Whitsunday Planning Area. The vessel length categories are:

- superyachts 35 metres or less in overall length
- superyachts more than 35 to less than 70 metres in overall length
- superyachts 70 metres and over in overall length.

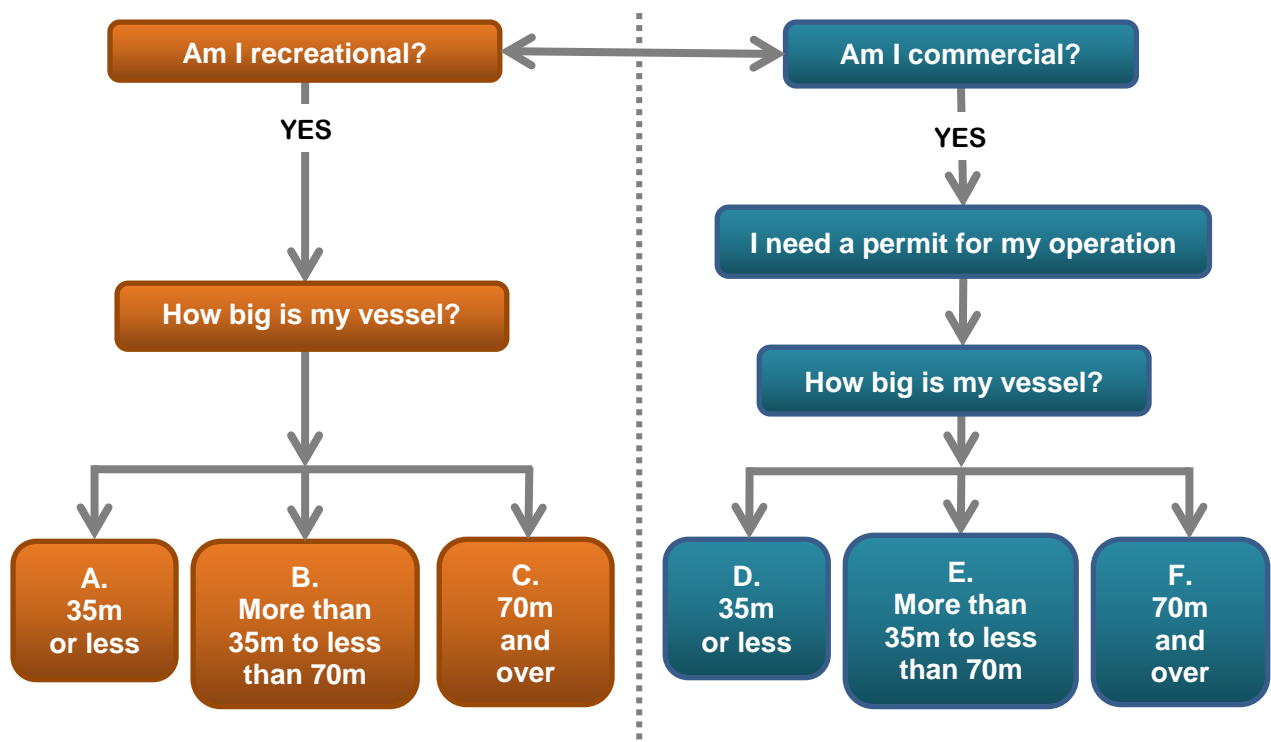
Overall vessel length is defined as 110 per cent of the length shown on the vessel's load-line certification. If the overall length of a vessel cannot be worked out using this method it is the distance between a vertical line passing through a point that is the foremost part of the stem, and the vertical line passing through a point that is the aftermost part of the stern.

If your superyacht is 50 metres and greater in overall length you must participate in the Great Barrier Reef and Torres Strait Vessel Traffic Service (REEFVTS) and you must operate in the Designated Shipping Area and General Use Zone (light blue zone) of the Zoning Plan. If you are 70 metres or greater in overall length you must carry a pilot in compulsory pilotage areas. Further information is available in the relevant vessel categories later in this guide.

Vessel categories

Use the chart on the following page to select what category of operation applies to your vessel and learn more about operating your superyacht in the Whitsundays. Detailed information is provided for each category later in Part 1 of this guide.

What category are you in?



Where you can go?

There are layers of access to the Marine Park. These include the Zoning Plan and the Plans of Management. When operating commercially there will also be permit conditions and Queensland Government conditions for the intertidal area.

Based on the category of your vessel, information in this guide will assist you with planning where your vessel can travel, stop or anchor within the Whitsundays. A [map of the Whitsunday Planning Area](#) is available in Part 3 of this guide.

Further information on each of the following is included in the separate vessel categories, Part 2 of this guide and the [Marine Park Authority website](#)*.

- Marine Park zoning
- Whitsundays Plan of Management
- settings
- sensitive areas
- anchorage and mooring
- what activities you do
- how to apply for a permit
- international recreational visitors
- pest management.

PLAN YOUR VISIT

You are encouraged to plan ahead and contact the Great Barrier Reef Marine Park Authority early. If you require a Marine Park permit to operate commercially it can take approximately 50 business days to process an application once all information has been received.

A - Recreational superyachts 35 metres or less

The following management arrangements apply for recreational superyachts that are 35 metres or less visiting the Whitsundays.

Zoning Plan

Recreational superyachts 35 metres or less are able to access all zones except for the Preservation Zone (pink zone) of the Great Barrier Reef Marine Park. Refer to [Zoning Map 10 - Whitsunday*](#) to view the locations of the different zones in the Whitsundays.

Whitsundays Plan of Management

Superyachts of this size are treated the same as other recreational vessels of the same size. You are able to access and anchor at:

- setting 1 (intensive), 2 (high use), 3 (moderate use) and 4 (low use) areas provided that your group size (including crew) and overall vessel length is correct for that setting area ([see Part 2 - Settings](#))
- setting 5 (protected) areas where a vessel is 20 metres or less in length
- outside of a setting area.

Make sure you are also aware of the locations of no-anchoring areas and significant bird sites. See [Part 2- Sensitive areas](#) later in this guide to learn more.

A vast network of public moorings is available to use. Before using a public mooring it is essential to be aware of important information about how to use one. See [Part 2- Anchoring and mooring](#) of this guide and visit the [Responsible Reef Practices - Moorings*](#) webpage at the [Marine Park Authority website*](#).

Activities

For some activities, there are additional management requirements. Please take the time to learn about these:

- [Diving and snorkelling](#)
- [Limited collecting](#)
- [Motorised water sports](#)
- [Private scenic flights](#)
- [Recreational fishing](#)
- [Whale and dolphin watching](#)

B - Recreational superyachts more than 35 metres to less than 70 metres

The following management arrangements apply for recreational superyachts that are 35 metres to less than 70 metres visiting the Whitsundays.

Zoning Plan

Recreational superyachts 35 metres to less than 70 metres are able to access all zones except for the Preservation Zone (pink zone) of the Great Barrier Reef Marine Park. Refer to [Zoning Map 10 - Whitsunday*](#) to view the different zones.

Whitsundays Plan of Management

You are able to access and anchor at:

- setting 1 (intensive) areas
- 21 **superyacht anchorages** in other settings with a booking (provided there are no more than 12 people other than master and crew)
- 10 **designated anchorages** in other settings with a booking *Note: two superyachts less than 70 metres can anchor in a designated anchorage*
- outside a setting area and use your tender to access the adjacent setting area, provided the group size and tender length is consistent with setting requirements

You are also able to transit through a setting area when travelling to and from a superyacht anchorage or designated anchorage. See [Part 2- Anchoring and mooring](#), to learn more about their locations, making a booking and using them.

Make sure you are also aware of the locations of no-anchoring areas and significant bird sites. To learn more refer to [Part 2- Sensitive areas](#) later in this guide.

Activities

Some activities have additional management requirements. Please take the time to learn about these:

- [Diving and snorkelling](#)
- [Limited collecting](#)
- [Motorised water sports](#)
- [Private scenic flights](#)
- [Recreational fishing](#)
- [Whale and dolphin watching](#)

Participation in the REEFVTS

Vessels that are 50 metres or greater in overall length are required by the Australian and Queensland Governments to participate in the Great Barrier Reef and Torres Strait Vessel Traffic Service (REEFVTS). This service provides vessels with shipping traffic information, navigational assistance and maritime safety information to aid on-board decision making. Contact the [Australian Maritime Safety Authority*](#) or [Maritime Safety Queensland*](#) for more details.

C - Recreational superyachts 70 metres and above

The following management arrangements apply for recreational superyachts that are 70 metres and over visiting the Whitsundays.

Zoning Plan

Recreational superyachts 70 metres or over are able to access all zones except for the Preservation Zone (pink zone) of the Great Barrier Reef Marine Park. Refer to [Zoning Map 10 - Whitsunday*](#) to view the locations of the different zones in the Whitsundays.

Whitsundays Plan of Management

You are able to access and anchor at:

- 10 **designated anchorages** within a setting area with a booking
- outside a setting area, and use your tender to access the adjacent setting area provided the group size and tender length is correct for that setting

You are also able to **transit** through a setting area when travelling to and from a designated anchorage. See [Part 2- Anchoring and mooring](#), to learn more about their locations, making a booking and using them.

Make sure you are also aware of the locations of no-anchoring areas and significant bird sites. To learn more refer [Part 2 - Sensitive areas](#) later in this guide.

Activities

For some activities there are additional management requirements. Please take the time to learn about these:

- [Diving and snorkelling](#)
- [Limited collecting](#)
- [Motorised water sports](#)
- [Private scenic flights](#)
- [Recreational fishing](#)
- [Whale and dolphin watching](#)

Participation in the REEFVTS

Vessels with an overall length of 50 metres or greater are required to participate in the Great Barrier Reef and Torres Strait Vessel Traffic Service (REEFVTS). This service provides vessels with shipping traffic information, navigational assistance and maritime safety information to aid on-board decision making. Contact the [Australian Maritime Safety Authority*](#) or [Maritime Safety Queensland*](#) for more details.

Compulsory pilotage areas

To provide safer navigation through the Great Barrier Reef waters, all vessels greater than 70 metres are required under Commonwealth law to carry a licensed pilot in designated compulsory pilotage areas. The compulsory pilotage areas are:

- the inner route of the Great Barrier Reef Region bounded by the northern boundary of the Great Barrier Reef Region, latitude 16°39.91'S, the Australian mainland and the outer eastern edge of the Great Barrier Reef
- Hydrographer's Passage
- the Whitsundays compulsory pilotage area.

Visit the [Great Barrier Reef Marine Park Authority*](#) and [Australian Maritime Safety Authority*](#) websites to learn more about [compulsory pilotage*](#), the [compulsory pilotage area*](#) and [pilotage exemptions*](#).

If you wish to enter one of Queensland's Ports contact the Regional Harbour Master for instructions. Further information on port procedures and contact details can be viewed at the [Maritime Safety Queensland*](#) website.

D - Commercial superyachts 35 metres or less

The following management arrangements apply for commercial superyachts that are 35 metres or less operating in the Whitsundays.

Permit

A permit is required to commercially operate a superyacht. You are encouraged to contact the Great Barrier Reef Marine Park Authority early and plan ahead. Applications will be processed in line with the service level standards detailed in the [Permissions Systems Service Charter*](#), which can take up to 50 business days depending on the complexity of the application. To learn more see [Part 2- Applying for a permit](#) and [Part 2 – Environmental management charge](#).

Zoning Plan

Generally, you will be able to access all zones except for the Preservation Zone (pink zone) of the Great Barrier Reef Marine Park. Refer to [Zoning Map 10 - Whitsunday*](#) to view the locations of the different zones in the Whitsundays.

Whitsundays Plan of Management

You are able to access the Whitsunday Planning Area for up to 50 days per year with [a booking](#). You are able to access and anchor at:

- setting 1 (intensive), 2 (high use), 3 (moderate use) and 4 (low use) areas provided your group size (including crew) and vessel length is correct for that setting area. See [Part 2 - Settings](#) to learn more.
- outside a setting area and use your tender to access the adjacent setting area, provided the group size and tender length is correct for that setting.

No access is provided to setting 5 (protected) areas. Only a limited number of tourism operators are able to operate in setting 5 (protected) areas and no additional commercial tourism permits will be issued for these setting areas.

Make sure you are also aware of the locations of no-anchoring areas and significant bird sites. See [Part 2- Sensitive areas](#) later in this guide to learn more.

A vast network of public moorings is available to use. Before using a public mooring it is essential to be aware of important information about how to use one. See [Part 2- Anchoring and mooring](#) of this guide and visit the [Responsible Reef Practices - Moorings*](#) webpage at the [Marine Park Authority website*](#).

Activities

For some activities conducted as part of a tour or charter there are additional requirements. If you wish to include them as part of your tourism program permit please take the time to learn about these in [Part 2– What activities you do](#) of this guide and the [Marine Park Authority website*](#). Please note: while motorised water sports can occur in certain parts of the Whitsunday Planning Area (if permitted), jet skis and other high speed vessels cannot be used as a tender to transit the Whitsunday Planning Area.

If you use aircraft or semi-submersibles check your permit for conditions. Flight restrictions do apply in the Whitsunday Planning Area. See [Part 2- Ancillary Aircraft](#) and the [Marine Park Authority's website*](#) to learn more.

*It is your responsibility
to*
KNOW YOUR PERMIT

Key things to note:

*Group limits
Zoning Plan rules
Plan of Management
rules
Restricted Areas*

E - Commercial superyachts more than 35 metres to less than 70 metres

The following management arrangements apply for commercial superyachts that are more than 35 metres to less than 70 metres operating in the Whitsundays.

Permit

A permit is required to commercially operate a superyacht. You are encouraged to contact the Great Barrier Reef Marine Park Authority early and plan ahead. Applications will be processed in-line with the service level standards detailed in the [Permissions Systems Service Charter*](#), which can take up to 50 business days depending on the complexity of the application. To learn more see [Part 2- Applying for a permit](#) and [Part 2- Environmental management charge](#).

Zoning Plan

Commercial superyachts 35 metres to less than 50 metres will be permitted access to all zones and shipping areas, except Preservation Zones (pink zones) of the Great Barrier Reef Marine Park.

Commercial superyachts between 50 metres to less than 70 metres will generally be permitted access to the General Use Zone (light blue zone) and Designated Shipping Areas. Generally, your tender will be able to access the following zones:

- General Use Zone (light blue zone)
- Habitat Protection Zone (dark blue zone)
- Conservation Park Zone (yellow zone)
- Marine National Park Zone (green zone).

Refer to [Zoning Map 10 - Whitsunday*](#) to view the locations of the different zones in the Whitsundays.

Whitsundays Plan of Management

You are able to access the Whitsunday Planning Area for up to 50 days per year with [a booking](#). Generally you can access and anchor at:

- setting 1 (intensive) areas
- 21 **superyacht anchorages** in other settings with a booking (provided there are no more than 12 people other than master and crew)
- 10 **designated anchorages** in other settings with a booking. *Note: two superyachts less than 70 metres can anchor in a designated anchorage*
- outside a setting area and use your tender to access the adjacent setting area provided the group size and tender length is correct for that setting.

You are also able to **transit** through a setting area (and zones) when travelling to and from a superyacht anchorage or designated anchorage. See [Part 2- Anchoring and mooring](#) to find out more about their locations, making a booking and using them. When making an anchorage booking (or multiple anchorage bookings in a day) a booking to the Whitsunday Planning Area will also automatically occur.

*It is your responsibility
to*

KNOW YOUR PERMIT

Key things to note:

Group limits

Zoning Plan rules

*Plan of Management
rules*

Restricted Areas

No access is provided to setting 5 (protected) areas. Only a limited number of tourism operators are able to operate in setting 5 (protected) areas and no additional commercial tourism permits will be issued for these setting areas.

Make sure you are also aware of the locations of no-anchoring areas and significant bird sites. To learn more refer [Part 2- Sensitive areas](#) later in this guide.

Can I use other craft for tourism activities?

You must ensure the group size on your tender is within the group size provided for at the setting

You can generally use your tender for additional tourist activities, such as snorkelling and scuba diving, if these activities are listed on your permit and your vessel size and passenger limit comply with the settings and the permit.

While motorised water sports can occur in certain parts of the Whitsunday Planning Area (if permitted), jet skis and other high speed vessels cannot be used as a tender to transit the Whitsunday Planning Area.

For some of the activities that you are likely to conduct on your tour or charter, there are additional requirements. Please take the time to learn about these in [Part 2- What activities you do](#) of this guide and the [Marine Park Authority website](#)* if you wish to include them as part of your tourism program permit.

Australian marine safety laws apply to the distance an ancillary vessel may leave its parent vessel. Contact the [Australian Marine Safety Authority](#)* to find out more about what you can do with your support vessels.

If you use helicopters or semi-submersibles check your permit for any conditions. Flight restrictions do apply in the Whitsunday Planning Area. Refer to [Part 2- Ancillary Aircraft](#) and the [Marine Park Authority website](#)* to learn more.

Participation in the REEFVTS

Vessels with an overall length of 50 metres or greater are required to participate in the Great Barrier Reef and Torres Strait Vessel Traffic Service (REEFVTS). This service provides vessels with shipping traffic information, navigational assistance and maritime safety information to aid on-board decision making. Contact the [Australian Maritime Safety Authority](#)* or [Maritime Safety Queensland](#)* for more details.

Designated Shipping Areas

Ships (including commercial superyachts greater than 50 metres) travelling through the Marine Park may only navigate within the designated Shipping Area and the General Use Zone (light blue zone). To navigate outside of these areas, ship operators must obtain a permit from the Great Barrier Reef Marine Park Authority. *Navigate* means to moor, or anchor in the course of navigation as per the Great Barrier Reef Marine Park Zoning Plan 2003. Please view the [Designated Shipping Area](#)* map at the [Marine Park Authority website](#)*.

If you wish to enter one of Queensland's Ports contact the Regional Harbour Master for instructions. Further information on port procedures and contact details can be viewed at the [Maritime Safety Queensland](#)* website.

F - Commercial superyachts 70 metres and above

The following management arrangements apply for commercial superyachts operating as a tourism program (including tourist charter) that are 70 metres and above operating in the Whitsundays.

Permit

A permit is required to commercially operate a superyacht. You are encouraged to contact the Great Barrier Reef Marine Park Authority early and plan ahead. Applications will be processed in-line with the service level standards detailed in the [Permissions Systems Service Charter*](#), which can take up to 50 business days depending on the complexity of the application. To learn more see [Part 2- Applying for a permit](#) and [Part 2 – Environmental management charge](#).

Zoning Plan

Commercial superyachts 70 metres and above will be permitted access to the General Use Zone (light blue zone) and Designated Shipping Areas.

Generally, your tender will be able to access the following zones:

- General Use Zone (light blue zone)
- Habitat Protection Zone (dark blue zone)
- Conservation Park Zone (yellow zone)
- Marine National Park Zone (green zone).

Refer to [Zoning Map 10 - Whitsunday*](#) to view the locations of the different zones in the Whitsundays.

Whitsundays Plan of Management

You are able to access the Whitsunday Planning Area for up to 50 days per year with a booking.

In the Whitsunday Planning Area access is allowed at the following:

- 10 **designated anchorages** with a booking
- outside a setting area, and use your tender to access the adjacent setting area provided the group size and tender length is correct for that setting

You are also able to **transit** through a setting area (and zones) when travelling to and from a designated anchorage. See [Part 2- Anchoring and mooring](#), to find out more about where they are located, making a booking and using them. When making an anchorage booking (or multiple anchorage bookings in a day) a booking to the Whitsunday Planning Area will also automatically occur.

No access is provided to setting 5 (protected) areas. Only a limited number of tourism operators are able to operate in setting 5 (protected) areas and no additional commercial tourism permits will be issued for these setting areas.

Make sure you are also aware of the locations of no-anchoring areas and significant bird sites. To learn more refer [Part 2- Sensitive areas](#) later in this guide.

*It is your responsibility
to*

KNOW YOUR PERMIT

Key things to note:

Group limits

Zoning Plan rules

*Plan of Management
rules*

Restricted Areas

Can I use other craft for tourism activities?

You must ensure the group size on your tender is within the group size provided for at the setting

You can generally use your tender for additional tourist activities, such as snorkelling and scuba diving, if these activities are listed on your permit and your vessel size and passenger limit comply with the settings and the permit.

While motorised water sports can occur in certain parts of the Whitsunday Planning Area (if permitted), jet skis and other high speed vessels cannot be used as a tender to transit the Whitsunday Planning Area.

For some of the activities that you are likely to conduct on your tour or charter, there are some additional requirements. Please take the time to learn about these in [Part 2- What activities you do](#) of this guide and the [Marine Park Authority's website](#)* if you wish to include them as part of your tourism program permit.

Australian marine safety laws also apply to the distance an ancillary vessel may leave its parent vessel. Contact the [Australian Marine Safety Authority](#)* to find out more about what you can do with your support vessels.

If you use helicopters or semi-submersibles, check your permit for any conditions. Flight restrictions do apply in the Whitsunday Planning Area. To learn more see [Part 2- Ancillary Aircraft](#) and the [Marine Park Authority's website](#)*.

Participation in the REEFVTS

Vessels with an overall length of 50 metres or greater are required to participate in the Great Barrier Reef and Torres Strait Vessel Traffic Service (REEFVTS). This service provides vessels with shipping traffic information, navigational assistance and maritime safety information to aid on-board decision making. Contact the [Australian Maritime Safety Authority](#)* or [Maritime Safety Queensland](#)* for more details.

Designated Shipping Areas

Ships (including commercial superyachts greater than 50 metres) travelling through the Marine Park may only navigate within the [designated Shipping Area](#) and the General Use Zone (light blue zone). To navigate outside of these areas, ship operators must obtain a permit from the Great Barrier Reef Marine Park Authority. *Navigate* means to moor, or anchor in the course of navigation as per the Great Barrier Reef Marine Park Zoning Plan 2003. Please view the [designated Shipping Area](#)* map at the Marine Park Authority website.

Compulsory pilotage areas

To provide safer navigation through the Great Barrier Reef waters, all vessels greater than 70 metres are required under Commonwealth law to carry a licensed pilot in designated compulsory pilotage areas.

Penalties exist for both the master and the owner of the superyacht if not obeyed. The compulsory pilotage areas are:

- the inner route of the Great Barrier Reef Region bounded by the northern boundary of the Great Barrier Reef Region, latitude 16°39.91'S, the Australian mainland and the outer eastern edge of the Great Barrier Reef

- Hydrographer's Passage
- the Whitsundays compulsory pilotage area.

Visit the [Great Barrier Reef Marine Park Authority*](#) and [Australian Maritime Safety Authority*](#) websites to learn more about [compulsory pilotage*](#), the [compulsory pilotage area*](#) and [pilotage exemptions*](#).

If you wish to enter one of Queensland's Ports contact the Regional Harbour Master for instructions. Further information on port procedures and contact details can be viewed at the [Maritime Safety Queensland*](#) website.

PART 2

Where you can go

Part 2 of this guide provides additional information you need to be aware of:

- [Marine Park zoning](#)
- [Whitsundays Plan of Management](#)
- [settings](#)
- [sensitive areas](#)
- [anchorage and mooring](#)
- [what activities you do](#)
- [how to apply for a permit](#)
- [international recreational visitors](#)
- [pest management.](#)

Marine Park Zoning

[Marine park zoning](#)* manages and protects the values of the Marine Park that people enjoy. Each zone has different rules for activities that are allowed, activities that are prohibited, and activities that require a permit. These are detailed in the [Great Barrier Reef Marine Park Zoning Plan 2003](#)*.

The major zones in the Whitsundays are:

- General Use Zone (light blue zone)
- Habitat Protection Zone (dark blue zone)
- Conservation Park Zone (yellow zone)
- Marine National Park Zone (green zone).

The GBRMP Zoning activities guide, to the right, sets out what you can do in each zone. Please refer to it carefully before taking part in any activities in the Marine Park.

[Zoning Map 10 - Whitsunday](#)* applies to the Whitsundays region.

Activity	GBRMP Zoning (see relevant Zoning Plans and Regulations for details)						
	General Use Zone	Habitat Protection Zone	Conservation Park Zone	Buffer Zone	Scientific Research Zone *	Marine National Park Zone	Preservation Zone
Aquaculture	Permit	Permit	Permit*	X	X	X	X
Bait netting	✓	✓	✓*	X	X	X	X
Boating, diving, photography	✓	✓	✓	✓	✓*	✓	X
Crabbing (trapping)	✓	✓	✓*	X	X	X	X
Harvest fishing for aquarium fish, coral and beachworm	Permit	Permit	Permit*	X	X	X	X
Harvest fishing for sea cucumber, trochus, tropical rock lobster	Permit	Permit	X	X	X	X	X
Limited collecting	✓*	✓*	✓*	X	X	X	X
Limited spearfishing (snorkel only)	✓	✓	✓*	X	X	X	X
Line fishing	✓*	✓*	✓*	X	X	X	X
Netting (other than bait netting)	✓	✓	X	X	X	X	X
Research (other than limited impact research)	Permit	Permit	Permit	Permit	Permit	Permit	Permit
Shipping (other than in a designated shipping area)	✓	Permit	Permit	Permit	Permit	Permit	X
Tourism programme	Permit	Permit	Permit	Permit	Permit	Permit	X
Traditional use of marine resources	✓*	✓*	✓*	✓*	✓*	✓*	X
Trawling	✓	X	X	X	X	X	X
Trolling	✓*	✓*	✓*	✓*	X	X	X

PLEASE NOTE: This guide provides an introduction to Zoning in the Great Barrier Reef Marine Park. Relevant Great Barrier Reef Marine Park Zoning Plans should be consulted for confirmation of use or entry requirements.

* Additional restrictions / conditions apply.

ACCESS TO ALL ZONES IS PERMITTED IN AN EMERGENCY.

Zoning maps help you get to know the zones and where they are located. Make sure you have a zoning map, know the zones and what's allowed.

Whitsundays Plan of Management

The [Whitsundays Plan of Management](#)* complements the zoning by addressing issues specific to an area in greater detail. The Plan balances increasing levels of visitation, a range of experiences (from remote to high use), and conflicting use, with impacts to aesthetic values and damage to the environment.

The Whitsunday Planning Area spans about 100 kilometres, covering marine waters from Cape Gloucester in the north to the Repulse Islands in the south. It also includes the Whitsunday and Lindeman Island groups as well as the Hardy Reef Unit. See Part 3 to view a [map of the Whitsunday Planning Area](#).

Become familiar with the Zoning and Whitsundays Plan of Management before visiting the Whitsundays. Where one provides a higher level of protection to an area then that rule applies.

Settings

To help maintain a range of opportunities for visitors to the Whitsunday Planning Area, each reef, bay and coastal area has been assigned a location and a setting. Setting limits apply to all users of the Whitsunday Planning Area. There are five settings, ranging from setting 1 (intensive) areas to setting 5 (protected) areas. The main factor is the group size that your vessel is carrying, but there are also some requirements regarding vessel length (refer to the table below). A [map of the Planning Area](#) can be viewed in Part 3.

Settings determine the level of use for a location.

Settings	Overall Vessel length	Group size
1. Intensive	Less than 70 metres	No limit
2. High use	35 metres or less*	No limit
3. Moderate use	35 metres or less	Max. 40 people
4. Low use	35 metres or less	Max. 15 people
5. Protected	20 metres or less	Max. 15 people

**At Hardy Reef, vessels less than 70 metres may enter the high use setting area if operating to a mooring or pontoon.*

Note: Setting limits do not apply to anchored cruise ships and their service vessels, large vessels (more than 35 metres), or large ships (70 metres and over) anchored at designated anchorages, or to vessels in transit. Other management tools are used to ensure environmental sustainability.

Sensitive areas

The Whitsundays has many sensitive areas and access is restricted to protect their values. These include setting 5 (protected) areas, no-anchoring areas and significant bird sites.

Setting 5 (protected) areas

Setting 5 (protected) areas are located at Cow and Calf Islands, Deloraine Island, Double Bay (East), Eshelby Islands, Haslewood and Lupton Islands, and Hill Inlet (including the northern end of Whitehaven Beach).

Recreational users are able to access setting 5 (protected) areas provided they have the correct vessel length and passenger numbers. Only a limited number of tourism operations that have relevant endorsements on their permits are able to operate in setting 5 (protected) areas. No additional commercial tourism permits will be issued for setting 5 (protected) areas.

No-anchoring areas

To protect sensitive coral reef habitat especially in high visitation areas there are no-anchoring areas (both marked and unmarked) in the Whitsundays.

- | | |
|--|-------------------------------------|
| 1. Baird Point, Hook Island | 16. Maureen's Cove, Hook Island |
| 2. Bait Reef (<i>unmarked</i>) | 17. North Stonehaven, Hook Island |
| 3. Black Island | 18. Peter Bay, Whitsunday Island |
| 4. Blue Pearl Bay, Hayman Island | 19. Pinnacle Bay, Hook Island |
| 5. Cairn Beach, Whitsunday Island | 20. Saba Bay, Whitsunday Island |
| 6. Cateran Bay, Border Island | 21. Sandy Bay, South Molle Island, |
| 7. Caves Cove, Hook Island | 22. South Stonehaven, Hook Island |
| 8. Chalkies Beach, Haslewood Island | 23. Sunlovers Bay, Daydream Island |
| 9. Crayfish Beach, Hook Island | 24. West Butterfly Bay, Hook Island |
| 10. Dumbell Island | |
| 11. East Butterfly Bay, Hook Island | |
| 12. False Nara, Hook Island | |
| 13. Langford Island | |
| 14. Luncheon Bay, Hook Island | |
| 15. Manta Ray Bay, Hook Island (<i>unmarked</i>) | |

No-anchoring areas are updated from time to time. For the most up to date information regarding no-anchoring areas and their coordinates check the [Marine Park Authority website](#)*and the [Great Barrier Reef Marine Park Regulations 1983](#)*.



Significant bird sites

Many migratory seabirds and shorebirds that visit the Whitsunday Planning Area and adjacent islands are recognised internationally. Their nesting areas are identified as significant bird sites in the Plan and limit and restriction periods apply.

The restriction period for each site is set out in the following table for both vessels and aircraft. Restriction periods commence from October except for Eshelby Islands where the Zoning Plan restricts entry all year through a Preservation Zone (pink zone). Aircraft are not permitted below 1500 feet or within 1000 metres of a significant bird site. These sites can be accessed outside of restriction period times maintaining a speed limit of six knots provided the vessel or tender length meet the relevant setting requirements.

Whitsunday significant bird sites and restriction periods

SIGNIFICANT BIRD SITE	RESTRICTIONS	
	<u>Vessel restriction within bird site</u>	<u>Aircraft restriction (no access below 1500 feet within 1000 metres of site)</u>
<ul style="list-style-type: none"> • Armit Island (southern beach only) • Armit Islets (No 1) • Double Cone Island (western island only) • Grassy Island (southern beach only) • Shaw Island (beach east of Burning Point) • South Repulse Island (western beach only) 	6 knots: 1 October–31 March	1 October–31 March
<ul style="list-style-type: none"> • Bird Island 	6 knots: All year	All year
<ul style="list-style-type: none"> • East Rock • Edwin Rock 	No access: 1 October–31 March 6 knots: 1 April–30 September	All year
<ul style="list-style-type: none"> • Eshelby Islands 	No Access: Zoning Plan limits access all year	All year
<ul style="list-style-type: none"> • Olden Rock (south of Olden Island) 	No access: 1 October–31 March	1 October–31 March

Anchoring and mooring

Mooring

A vast network of public moorings is available for use in the Whitsunday Planning Area.

If you have a superyacht that is the appropriate size for the setting area or are using a tender for closer access you are encouraged to use a mooring in preference to dropping an anchor.

Public moorings are busy so it is important that you observe their conditions of use and advice given on the information tags attached to the mooring pick-up line. Vacate a public mooring as soon as you can to allow access for other users and never stay longer than the time limit. There are a small number of private moorings in the Whitsunday Planning Area; these require the owner’s permission prior to use.



Please visit the [Responsible Reef Practices – mooring*](#) webpage and view the [Public Moorings and Response Anchoring video*](#) at the [Great Barrier Reef Marine Park Authority YouTube channel*](#) to find out more about picking up and leaving a mooring.

Anchorage in the Whitsundays

There are 21 **superyacht anchorages** and 10 **designated anchorages** across the Whitsunday Planning Area.

A superyacht anchorage is available for vessels that are less than 70 metres and carrying no more than 12 passengers not including crew. Designated anchorages (previously known as cruise ship anchorages) are mainly for use by vessels 70 metres and longer. Smaller

vessels can also access designated anchorages, with up to two smaller vessels anchoring at a designated anchorage at one time.

A booking must be made to use an anchorage and the **anchor equipment (anchor and chain) must remain inside the specified anchorage areas at all times**. Refer to the [Great Barrier Reef Marine Park Regulations 1983*](#) for the most up to date descriptions of the anchorages.

Superyacht anchorages

- | | |
|----------------------------------|---|
| 1. Blue Pearl Bay, Hayman Island | 12. Macona Inlet, Hook Island |
| 2. Bona Bay, Gloucester Island | 13. Neck Bay, Shaw Island |
| 3. Border Island East | 14. Roberta Bay, Shaw Island |
| 4. Burning Point, Shaw Island | 15. Scrub Hen Beach, Whitsunday Island |
| 5. Cape Conway/Repulse Bay | 16. Stonehaven, Hook Island (2 vessels) |
| 6. Cateran Bay, Border Island | 17. South East Thomas Island |
| 7. Chance Bay, Whitsunday Island | 18. Tongue Bay, Whitsunday Island |
| 8. Gap Beach, Lindeman Islands | 19. Turtle Bay, Whitsunday Island |
| 9. Grassy Island | 20. Whitehaven Beach South (2 vessels) |
| 10. Henning Island Passage | 21. Woodwark Bay. |
| 11. Luncheon Bay, Hook Island | |

Designated anchorages

- | | |
|------------------------|-------------------------------|
| 1. Hardy Reef | 6. Turtle Bay |
| 2. South Hayman Island | 7. South East Hamilton Island |
| 3. Cid Harbour | 8. Funnel Bay |
| 4. Port Molle | 9. South Hamilton Island |
| 5. Fitzalan Passage | 10. North West Dent Island. |

Anchorage bookings

Anchorage will be allocated on a first-come, first-serve basis. A booking may be made on the day of visitation but it is strongly recommended they are made early to ensure availability.

You can make a booking through the [Online Bookings system*](#) or by emailing bookings@gbrmpa.gov.au. To access Bookings Online, you will need to obtain a login and password. To obtain login details, email bookings@gbrmpa.gov.au or contact the Great Barrier Reef Marine Park Authority on (07) 4750 0700 **during business hours** (8:30am to 5:00pm weekdays).

Commercial operators will be provided login details for Bookings Online after their permit is issued or alternatively they can register through [Permits Online*](#). Please note there are additional requirements for bookings to the Whitsunday Planning Area for commercial superyachts detailed later in Part 2.

What details do I provide?

Before you make a booking you will need to obtain a login from the Marine Park Authority, make sure that you have handy:

- your contact details
- your vessel name, length and/or a Vessel Identification Number
- dates that you want to visit
- name of the anchorage you wish to visit

- for international vessels, a control permit from Australian Border Force with the Australian Department of Immigration and Border Protection provided by the holder
- for Australian vessels, your vessel registration showing recreational status.

What activities you can do

The Whitsunday Planning Area is very popular for a range of recreational activities whether it is snorkelling, diving, fishing, motorised water sports, or viewing marine life. For each zone and setting there are specific recreational activities that have special rules applied.

The main activities are briefly discussed in this guide; however, there are responsible reef practices for a range of activities to become familiar with when visiting and operating in the Marine Park.

There are also requirements when including certain activities as part of a commercial operation. Please visit the [Onboard webpages*](#) for commercial operators at the Marine Park Authority's website to learn more.

Make sure to visit the Great Barrier Reef Marine Park Authority website to learn about [Responsible Reef Practices*](#).

- **Dangerous jellyfish (stingers) may be present all year. Wear suitable protective clothing and carry lots of vinegar.**
- **Look but don't touch! Some marine organisms, such as cone shells, blue ringed octopus and stonefish deliver painful and potentially fatal stings if handled.**
- **Beware of estuarine crocodiles. They inhabit mainland estuaries but may be present in island waters and on beaches. [Be croc wise*](#)**

Diving and snorkelling

Diving and snorkelling are some of the best ways to experience the spectacular underwater views that the Great Barrier Reef has to offer and to come face-to-face with its captivating marine life.

Although divers and snorkellers have minimal impact upon the Great Barrier Reef it is still important to use responsible reef practices to preserve the environment and ensure your safety. Please visit [Responsible Reef Practices – Diving and snorkelling*](#) webpage to learn more.

Commercial operators should also visit the [Onboard - Diving*](#) and [Onboard - Snorkeling*](#) webpages to learn more about preparing for dives and keeping clients and the reef safe.

- **Move slowly and deliberately**
- **Avoid making sudden or loud noises**
- **Avoid touching any part of the reef**
- **Avoid kicking up sand**
- **Avoid touching any animals or plants**

Limited collecting

If you are visiting a General Use Zone (light blue zone), Habitat Protection Zone (dark blue zone) or Conservation Park Zone (yellow zone) in the Marine Park recreationally, you may generally collect up to five shells, fish or invertebrates of any one species by hand or hand-held implement. Collecting is not permitted in other zones. You must not collect any coral or protected species (alive or dead) without a permit. On national park islands and Commonwealth Islands everything is protected, including shells.

Note: For fishing or collecting as part of a tourist program the Great Barrier Reef Marine Park Authority will not grant any new permissions in the Whitsunday Planning Area, except in the General Use Zone (light blue zone) and Habitat Protection Zone (dark blue zone).

Please visit the [Responsible Reef Practices – Limited collecting](#)* webpage and [Zoning Map 10 - Whitsunday](#)* to learn more about how and where this activity can occur.

Fishing

Fishing is one of the most popular recreational activities in Queensland. Areas where recreational fishing can occur include:

General Use Zone (light blue zone): Line fishing, trolling, limited spearfishing, bait netting, and crabbing (trapping).

Habitat Protection Zone (dark blue zone): Line fishing, trolling, limited spearfishing, bait netting, and crabbing (trapping).

Conservation Park Zone (yellow zone): limited line fishing, trolling, bait netting, crabbing (trapping) using no more than four apparatus per person, and limited spearfishing. However, all spearfishing is prohibited in those Conservation Park Zones (yellow zones) that are also declared Public Appreciation Special Management Areas. These areas are shown as broken pink lines on the zoning maps.

Under Queensland fisheries legislation additional spearfishing closures exist in the General Use Zone (light blue zone) and Habitat Protection Zone (dark blue zone) in the Great Barrier Reef Marine Park. View the [Spearfishing in the Whitsundays map](#)* at the [Marine Park Authority website](#) for more information on spearfishing rules in the Whitsundays.

Visit the [Responsible Reef Practices - recreational fishing](#)* and the [Queensland Government recreational fishing rules and regulations](#)* websites to learn more about seasonal closures, bag limits and size limits for different fish species.

Commercial superyachts wishing to do fishing tours please visit the [Onboard - Fishing Tours](#)* webpage to learn more.

Motorised water sports

Motorised water sports such as jet skiing (i.e. circle work) and parasailing is becoming an increasingly popular activity in the Whitsundays. There are a range of locations across the Whitsunday Planning Area available for motorised water sports including: three designated motorised water sports areas, 10 setting 1 (intensive) areas, and outside setting areas. If

Limited spearfishing is fishing with a spear or speargun, NOT a powerhead, firearm, a light or underwater breathing apparatus other than a snorkel.

Limited line fishing is one hand held rod or one hand held line per person, with no more than one hook attached to that line.

Trolling is a maximum of six hooks attached to no more than three hand held rods or handlines per person.

using a jet ski recreationally and not as part of a tourism operation, you are allowed to transit using your jet ski between these areas provided you are driving in a direct and reasonable route and not adrift, between the two places. Transiting does not include: circling, weaving, diverting, surfing down or jumping over or across waves, swell or wash. Please visit the [Responsible Reef Practices – motorised water sports*](#) webpage to learn more.

Commercial operators wishing to include motorised water sports activities in their tourism program will need a Marine Park permit that specifically allows this activity. Permitted operators may conduct water sports at the above mentioned locations; however, they may only transit from the mainland and to and from the setting 1 (intensive) areas and motorised water sports areas listed in the Whitsundays Plan of Management. Jet skis cannot be used to transit to other areas and settings in the Whitsunday Planning Area. Please visit the [Onboard – motorised water sports*](#) webpage to learn more about including this activity as part of your permit.

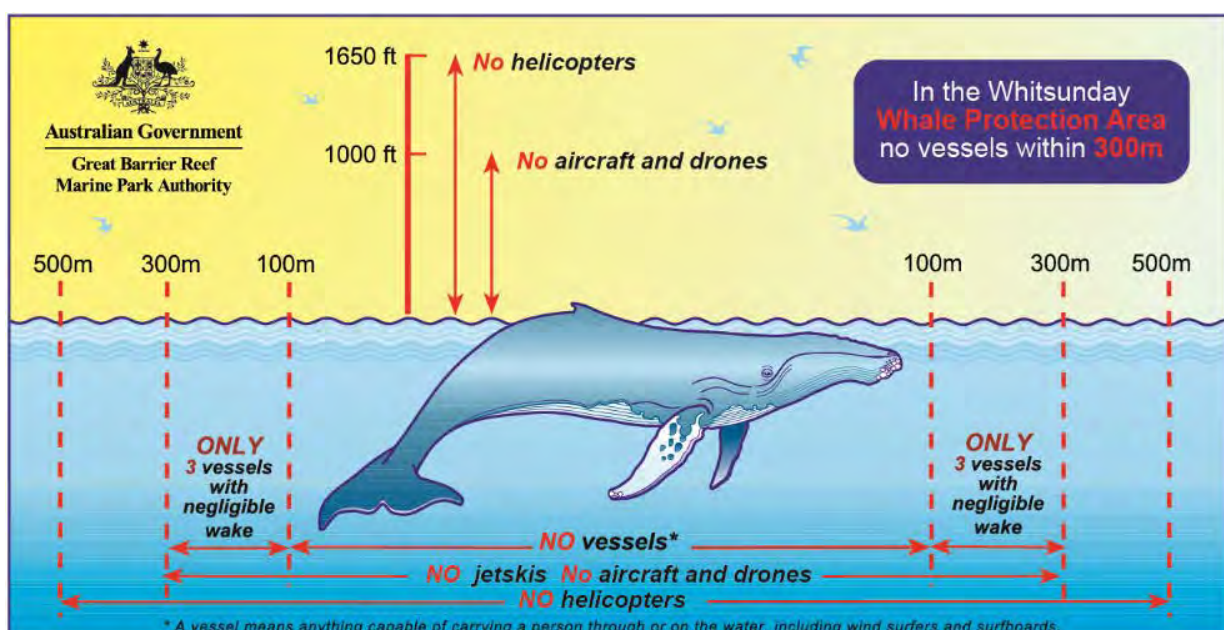
View the [Motorised Water Sports map](#) in Part 3 to see where you can do this activity in the Whitsundays. Detailed coordinates of the setting 1 (intensive) areas and designated motorised water sports areas are located in the [Whitsundays Plan of Management 1998*](#).

Whale watching

Viewing whales and dolphins is a fantastic wildlife experience that the Great Barrier Reef has to offer. To ensure their wellbeing, and your safety, it is vital that you exercise responsible practices when in the vicinity of whales and dolphins. Please visit the [Responsible Reef Practices – whale and dolphin watching*](#) and [around whales and dolphins*](#) webpages to learn more about related responsible practices to protect these amazing creatures.

**All whales and dolphins
are legally protected in
the Great Barrier Reef
Marine Park**

The majority of the Whitsunday Planning Area is a Whale Protection Area and is shown as a grey dashed line on [Zoning Map 10 - Whitsunday*](#). A person must not operate a vessel as a tourist program for whale watching or swimming activities in a Whale Protection Area.



Ancillary Aircraft

Visiting the Whitsundays by air is a unique experience. Flight restrictions do apply in the Whitsunday Planning Area depending on your purpose of flight and where you are operating. Aircraft conducting scenic flights must not operate below 1000 feet in the Whitsunday Planning Area and aerobatics must not be performed in a setting area, except a setting 1 (intensive) area. Aircraft within 1000 metres of a significant bird site must operate above 1500 feet (above ground or water). Regular aircraft landing areas are also available through the Whitsunday Planning Area and can be viewed on the [map of the Whitsunday Planning Area](#) in Part 3.

All aircraft must comply with the *Civil Aviation Regulations 1998* and the rules of the Whitsundays Plan of Management 1998.

Commercial operators wishing to include scenic flights in their tourism program will need a Marine Parks permit that specifically allows this activity. Please visit the [Onboard – aircraft tours*](#) webpage to learn more about including this activity as part of your permit.

How to apply for a permit

To apply for a permit you will need to access the permit and application management system, [Permits Online*](#) at the Great Barrier Reef Marine Park Authority website. To access Permits Online, visit <https://secure.gbrmpa.gov.au/permitsonline/> or use the 'Login for...' option at the top of Great Barrier Reef Marine Park Authority's homepage. Permits Online has a step by step process where applications can be completed electronically and lodged.

As a new user, click on the 'Register' option to provide your email address, choose a password and receive a confirmation email to establish your account. For more information and assistance contact our Assessments team at assessments@gbrmpa.gov.au or phone 07 4750 0860 (between 9am and 2pm EST, Monday to Friday).

A permit application fee applies to cover the cost of processing the application and is charged prior to its assessment. The fee is based on the type of operation you are applying for and will vary depending on its size, number of passengers and potential for environmental impacts. Paying the fee does not guarantee a permit.

You are encouraged to plan ahead and contact the Great Barrier Reef Marine Park Authority early especially if you require a Marine Parks permit to operate commercially, which can take up to 50 business days depending on the complexity of the application. Applications will be processed in line with the service level standards detailed in the [Permissions Systems Service Charter*](#).

Environmental Management Charge

The environmental management charge (EMC) is associated with most commercial activities. The funds received from the EMC are vitally important in the day-to-day management of the Marine Park and in improving its long-term resilience. All funds received as EMC payments are applied directly to management of the Marine Park. You are not required to pay GST on any EMC collected.

As a permittee you are responsible for:

- **collecting the correct amount**
- **keeping accurate records**
- **submitting logbooks**
- **remitting all payments quarterly**
- **accurately advertise the EMC.**

To learn more about the full day and part day charges visit the [Environmental Management Charges*](#) webpage at the [Marine Park Authority website*](#).

Bookings to the Planning Area

In addition to the anchorage bookings mentioned previously, some types of commercial activities will also require to make a booking to the Whitsunday Planning Area via [Bookings Online](#)*. For example, Standard Tour Operations will have a permit that grants 50 days access to the Whitsunday Planning Area per year and these days must be booked online prior or on the day.

Commercial vessels that do not use a superyacht or designated anchorage area will need to make an online booking to the Planning Area each day they access the Planning Area. For commercial superyachts that book to a superyacht or designated anchorage (or multiple anchorage bookings in a day) the online booking to the Planning Area will also occur automatically (to save time) and be logged as one of their 50 days to the Planning Area. Additionally, commercial superyachts that anchor outside of settings and use a tender to access the settings will also need to make an online booking each day they access the Planning Area.

National Parks

The Whitsundays is a popular destination and includes many beautiful National Park islands with a range of walking tracks and camp grounds available for recreational users. Visit the Queensland Government [Whitsunday national park islands](#)* webpages to find out more about the facilities and activities available.

For on-land commercial tours there are commercial activity permit and booking requirements from the Queensland Government. Learn more about applying for a Commercial Activity Permit at the [Queensland Government - Operating in a national park, recreation area or forest](#)* website.

Recreational international visitors entering Australia

A control permit from Australian Border Force with the Australian Department of Immigration and Border Protection will be required as proof that you are not operating commercially. This will be requested from you as part of obtaining your login to access the online bookings database. If the control permit expires, or there is a change of master (control permit holder), a new control permit will be required. Superyachts that enter Australia from overseas must arrive at a port of entry for international vessels. Further information is available from the [Australian Department of Immigration and Border Protection](#)*.

Pest Management

Please plan ahead and undertake appropriate ballast water management and biofouling treatment if required before entering the Marine Park and the Whitsunday Planning Area.

All ballast water management must be documented, and reported where required, as per the requirements of the [Biosecurity Act 2015](#)*. To find out more about ballast water management for international vessels and for vessels travelling within Australian waters refer to [the Australian Ballast Water Management Requirements](#)* and visit the [Department of Agriculture and Water Resources' ballast water](#)* website.

***Ballast water must not be discharged or exchanged in the
Great Barrier Reef Marine Park***

Vessels exchanging internationally sourced ballast water **must** conduct exchanges:

- where possible, more than 200 nautical miles from the edge of the Great Barrier Reef Marine Park and in water greater than 200 metres deep
- where that is not possible, at least 50 nautical miles from the edge of the Great Barrier Reef Marine Park, and in water greater than 200 metres deep
- where that is not possible, no less than 12 nautical miles from the edge of the Great Barrier Reef Marine Park, and in water greater than 50 metres deep.

Vessels exchanging Australian-sourced ballast water **MUST** conduct exchanges:

- at least 12 nautical miles from the edge of the Great Barrier Reef Marine Park, and in water greater than 50 metres deep.

To help prevent the spread of marine pests, it is very important that vessels are well maintained and that biofouling is minimised. For more information on managing biofouling see the [National Biofouling Management Guidelines*](#) at the Department of Agriculture and Water Resources website.

Island Biosecurity is also very important. Introduced pests and weeds can have significant impacts on island ecosystems. Please ensure that all clothes, equipment and supplies are clean and checked for pests and weeds before heading to an island. Visit the [Queensland National Parks website](#) to learn more.

PART 3

Definitions

Commercial superyacht: Provides transport, accommodation or services for tourists, guests or other persons who have paid for passage on, or the charter of, the vessel.

Designated anchorages: A designated anchorage is an area described in Schedule 1 of the *Great Barrier Reef Marine Park Regulations 1983* and is available for vessels 70 metres and greater in length.

High speed vessel: A personal watercraft, hovercraft or wing-in-ground-effect, or vessel of any kind if operated faster than 35 knots.

Motorised water sport: Any of the following activities:

- (a) irregular driving of a motorised vessel—that is, driving the vessel otherwise than in a straight line (except for necessary turns or diversions), including:
 - (i) driving in a circle or other pattern; or
 - (ii) weaving or diverting; or
 - (iii) surfing down, or jumping over or across, any wave, swell or wash;
- (b) an activity in which a high-speed vessel or motorised vessel tows a person on top of the water or in the air (for example, waterskiing or parasailing);
- (c) an activity in which a personal watercraft is used, except:
 - (i) for transport by taking the most direct reasonable route and driving in a regular manner between two places; or
 - (ii) if the personal watercraft can only be operated when fully submerged under the water and for the primary purpose of viewing coral.

Overall vessel length: Overall vessel length is described in the *Great Barrier Reef Marine Park Act 1975* as 110% of the length shown on the vessel's load-line certification.

Superyacht: A high-value, luxury sailing or motor vessel in use for sport or pleasure.

Superyacht anchorage: A superyacht anchorage is an area defined in Schedule 1A – Superyacht anchorages of the *Great Barrier Reef Marine Park Regulations 1983* and is available to vessels less than 70 meters in length provided there are no more than 12 people other than master and crew.

Transiting: A vessel or aircraft is **transiting** an area (however described), or from a place (the origin) to another place (the destination), if the vessel or aircraft is travelling:

- (a) through the area, or from the origin to the destination, by the most direct and reasonable route; and
- (b) in the case of a vessel—in such a manner that, at all times when the vessel is on that route, the vessel is being propelled (whether by engine, sail or human power) through the water in a forward direction and is not adrift.

For this purpose, it does not matter where the origin or the destination is, whether the origin is a point or an area or whether the destination is a point or an area.

Useful Weblinks

AUSTRALIAN AND QUEENSLAND GOVERNMENTS

- Great Barrier Reef Marine Park Authority: <http://www.gbrmpa.gov.au/>
- Queensland Parks and Wildlife Service: <https://www.npsr.qld.gov.au/nationalparks/>
- Australian Immigration and Border Protection: <http://www.border.gov.au/>
- Australian Maritime Safety Authority: <https://www.amsa.gov.au/>
- Maritime Safety Queensland: <https://www.msq.qld.gov.au/>

LEGISLATION

- *Biosecurity Act 2015*: <https://www.legislation.gov.au/Details/C2017C00303>
- *Great Barrier Reef Marine Park Act 1975*:
<https://www.legislation.gov.au/Details/C2016C00058>
- *Great Barrier Reef Marine Park Regulations 1983*:
<https://www.legislation.gov.au/Series/F1996B01950>
- Great Barrier Reef Marine Park Zoning Plan 2003:
http://www.gbrmpa.gov.au/_data/assets/pdf_file/0015/3390/GBRMPA-zoning-plan-2003.pdf
- Zoning Map 10 - Whitsundays:
<http://elibrary.gbrmpa.gov.au/jspui/bitstream/11017/600/4/Map10-EditionV-Whitsunday.pdf>
- Whitsundays Plan of Management 1998:
<http://elibrary.gbrmpa.gov.au/jspui/bitstream/11017/3242/1/Whitsundays-Plan-of-Management-2017.pdf>

ALL USERS

- Great Barrier Reef Marine Park Authority Online Bookings:
<https://secure.gbrmpa.gov.au/bookingsonline/About.aspx>
- Great Barrier Reef Marine Park Authority Responsible Reef Practices:
<http://www.gbrmpa.gov.au/visit-the-reef/responsible-reef-practices/motorised-water-sports>
- Queensland Recreational Fishing Rules and Regulations:
<https://www.daf.qld.gov.au/fisheries/recreational/rules-regulations>
- Spearfishing in the Whitsundays: <http://elibrary.gbrmpa.gov.au/jspui/handle/11017/3252>
- Whitsunday Island National Parks:
<https://www.npsr.qld.gov.au/parks/parks-whitsundays/>
- Be Crocwise - Queensland Environment and Heritage Protection:
https://www.ehp.qld.gov.au/wildlife/livingwith/crocodiles/crocodiles_be_croc_wise.html
- Queensland National Parks Booking Service: <https://qpws.usedirect.com/qpws/>
- Marine Stingers, Surf Life Saving Queensland: <http://www.marinestingers.com.au/>

COMMERCIAL OPERATORS

- Great Barrier Reef Marine Park Authority Permits Online:
<https://secure.gbrmpa.gov.au/permitsonline>

- Great Barrier Reef Marine Park Authority Onboard:
<http://www.gbrmpa.gov.au/onboard/about-onboard>
- Great Barrier Reef Marine Park Authority Onboard – How to apply for a marine parks permit: <http://www.gbrmpa.gov.au/onboard/permits/how-to-apply-for-a-marine-parks-permit>
- Great Barrier Reef Marine Park Authority Environmental Management Charges:
<http://www.gbrmpa.gov.au/zoning-permits-and-plans/environmental-management-charge/what-are-the-charges>
- National Park Commercial Activity Permits:
<https://www.business.qld.gov.au/industries/hospitality-tourism-sport/tourism/starting-up/regulations/parks-recreation-forests/commercial-activity-permit/requirements>

LARGER VESSELS

- Compulsory Pilotage Areas:
http://www.gbrmpa.gov.au/_data/assets/pdf_file/0008/186281/CompPilotage-GBRMP-August2014.pdf
- Compulsory Pilotage Exemptions: <http://www.amsa.gov.au/forms-and-publications/Fact-Sheets/CoastalPilotageExemption.pdf>
- Compulsory Pilotage: <http://www.gbrmpa.gov.au/managing-the-reef/how-the-reefs-managed/Managing-multiple-uses/shipping/compulsory-pilotage>
- Great Barrier Reef Marine Park Authority Designated Shipping Areas:
http://www.gbrmpa.gov.au/_data/assets/pdf_file/0006/186279/Designated-Shipping-Area.pdf

PEST MANAGEMENT

- Australian Ballast Water Management Requirements:
<http://www.agriculture.gov.au/biosecurity/avm/vessels/ballast/australian-ballast-water-management-requirements>
- Australian Government ballast information:
<http://www.agriculture.gov.au/biosecurity/avm/vessels/ballast>
- National Biofouling Management Guidelines:
<http://www.agriculture.gov.au/biosecurity/avm/vessels/biofouling>

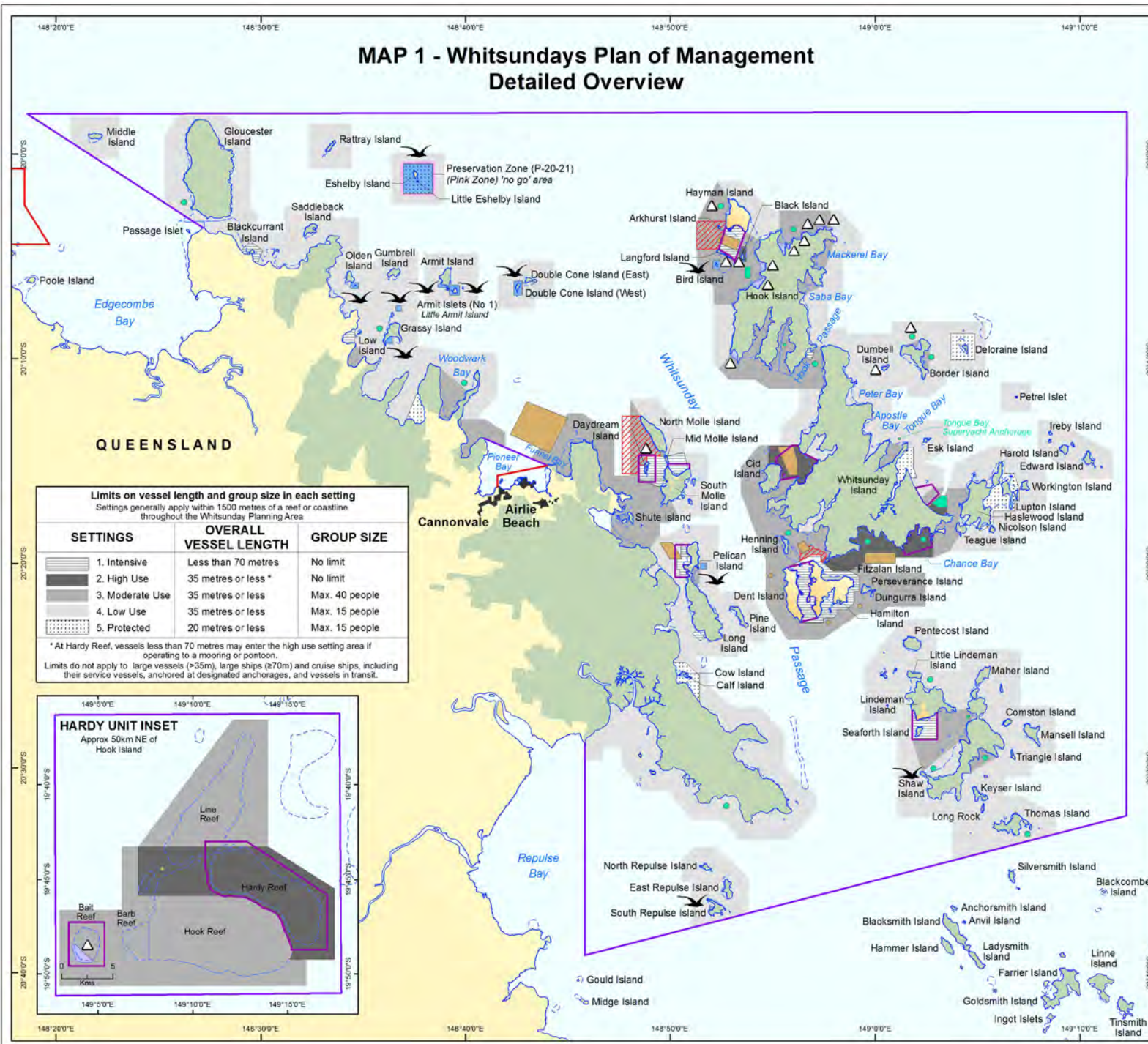


Australian Government
Great Barrier Reef
Marine Park Authority

THIS MAP IS INDICATIVE ONLY

Boundaries depicted on this map are indicative only. Users must refer to the Whitsundays Plan of Management 1998 and the Great Barrier Reef Marine Park Regulations 1983 for precise boundary descriptions.

MAP 1 - Whitsundays Plan of Management Detailed Overview



LEGEND

- Great Barrier Reef Marine Park boundary
- Whitsunday Planning Area boundary
- Designated Motorised Water Sports Area
- Regular Aircraft Landing Area
- Superyacht Anchorage (<70m)
- Designated Anchorage
- No Anchoring Area
- Significant Bird Site
- Indicative Reef boundary
- National Park
- Town
- Mainland and Islands



Map Projection: Unprojected Geographic
Horizontal Datum: Geocentric Datum of Australia, 1994
Data Source: © State of Queensland (Department of National Parks, Sport and Racing) 2016
SDC170705a July 2017

MAP 2 - Whitsundays Plan of Management Motorised Water Sports Areas



Australian Government
Great Barrier Reef
Marine Park Authority

THIS MAP IS INDICATIVE ONLY

Boundaries depicted on this map are indicative only. Users must refer to the Whitsundays Plan of Management 1998 and the Great Barrier Reef Marine Park Regulations 1983 for precise boundary descriptions.

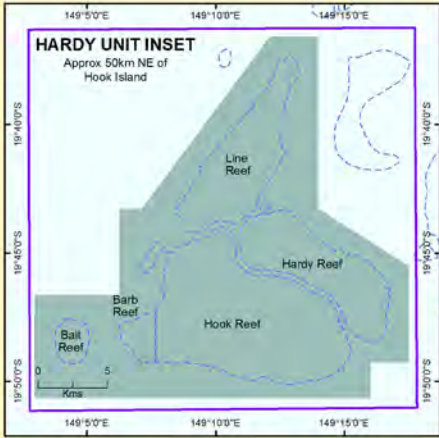
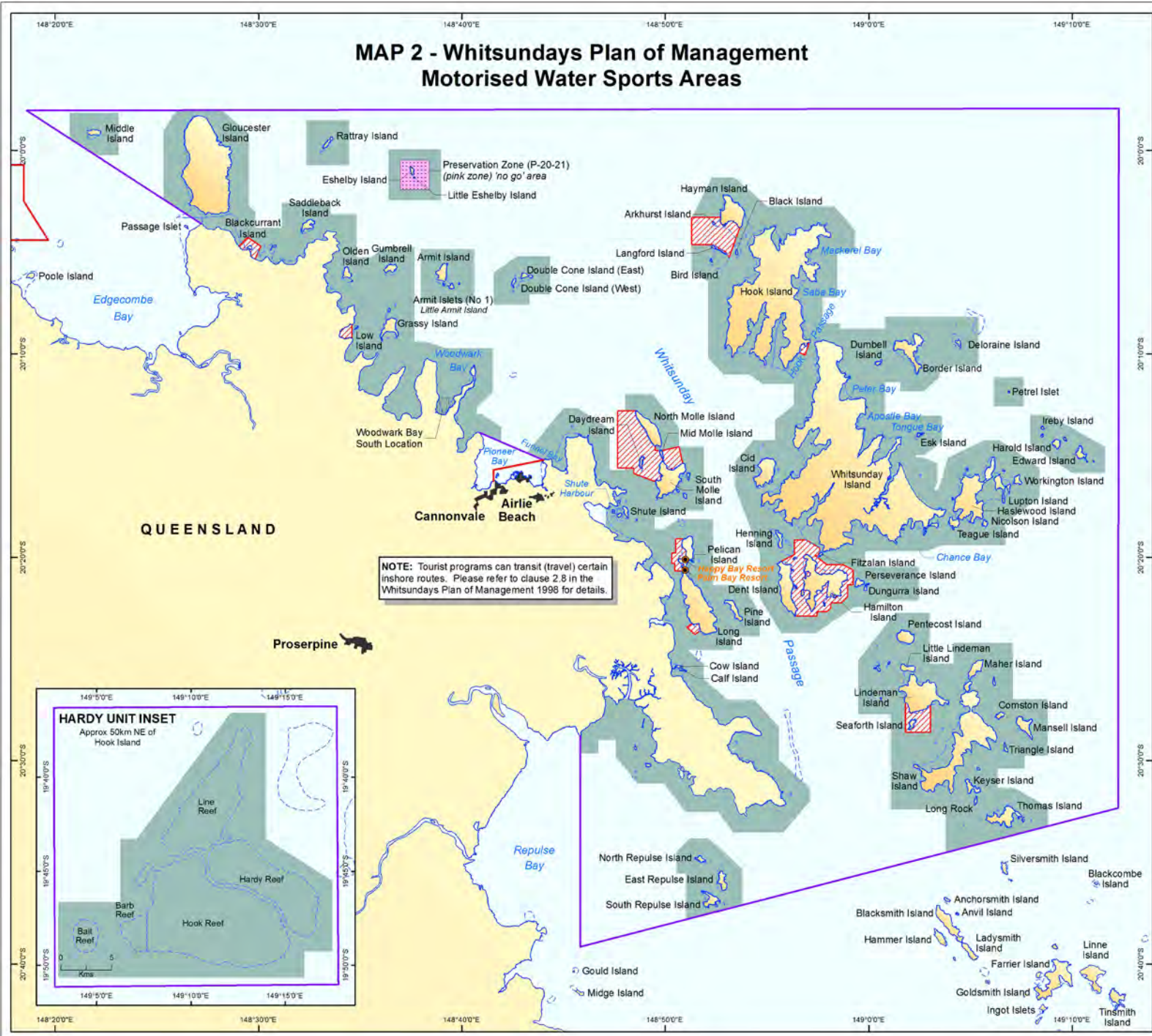
LEGEND

- Great Barrier Reef Marine Park boundary
- Whitsunday Planning Area boundary
- ▨ Motorised Water Sports allowed
(This combines setting 1 (intensive) areas and designated motosed water sports areas)
NOTE: Motorised water sports are also allowed outside setting areas.
- Motorised Water Sports not allowed
- ⊙ Indicative Reef boundary
- ⬛ Town
- Mainland and Islands

NOTE: Tourist programs can transit (travel) certain inshore routes. Please refer to clause 2.5 in the Whitsundays Plan of Management 1998 for details.



Map Projection: Unprojected Geographic
Horizontal Datum: Geocentric Datum of Australia, 1994
Names are not necessarily authoritative
SDC1707066 September 2017





Australian Government

**Great Barrier Reef
Marine Park Authority**

2-68 Flinders Street Townsville
PO Box 1379 Townsville
QLD 4810
Phone: (07) 4750 0700
www.gbrmpa.gov.au