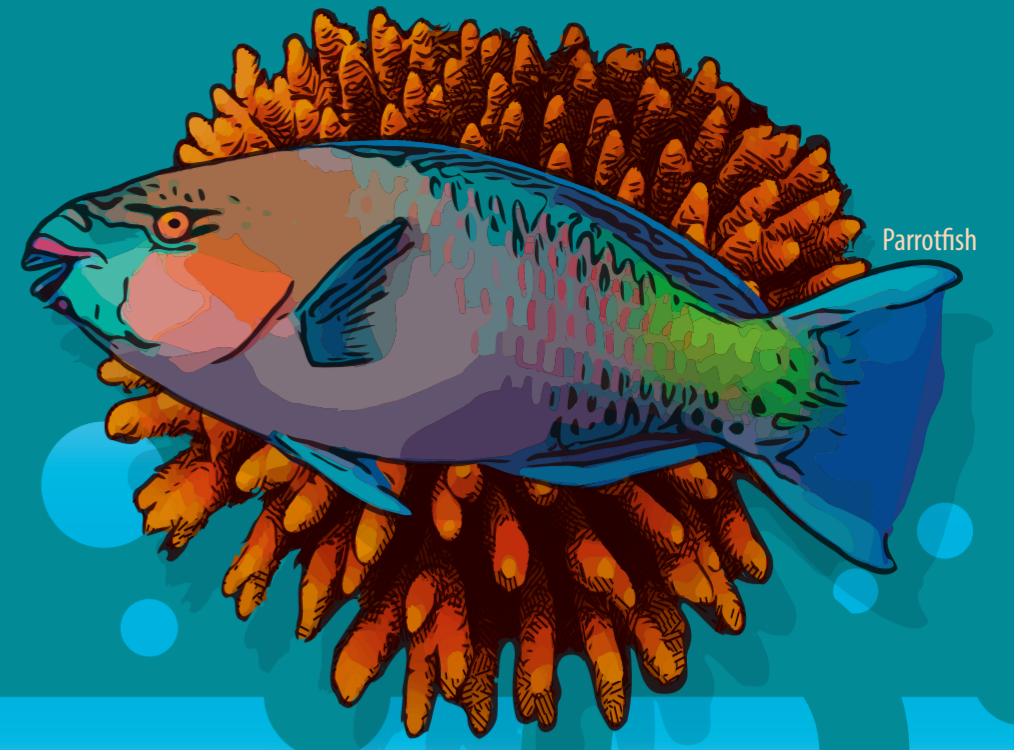
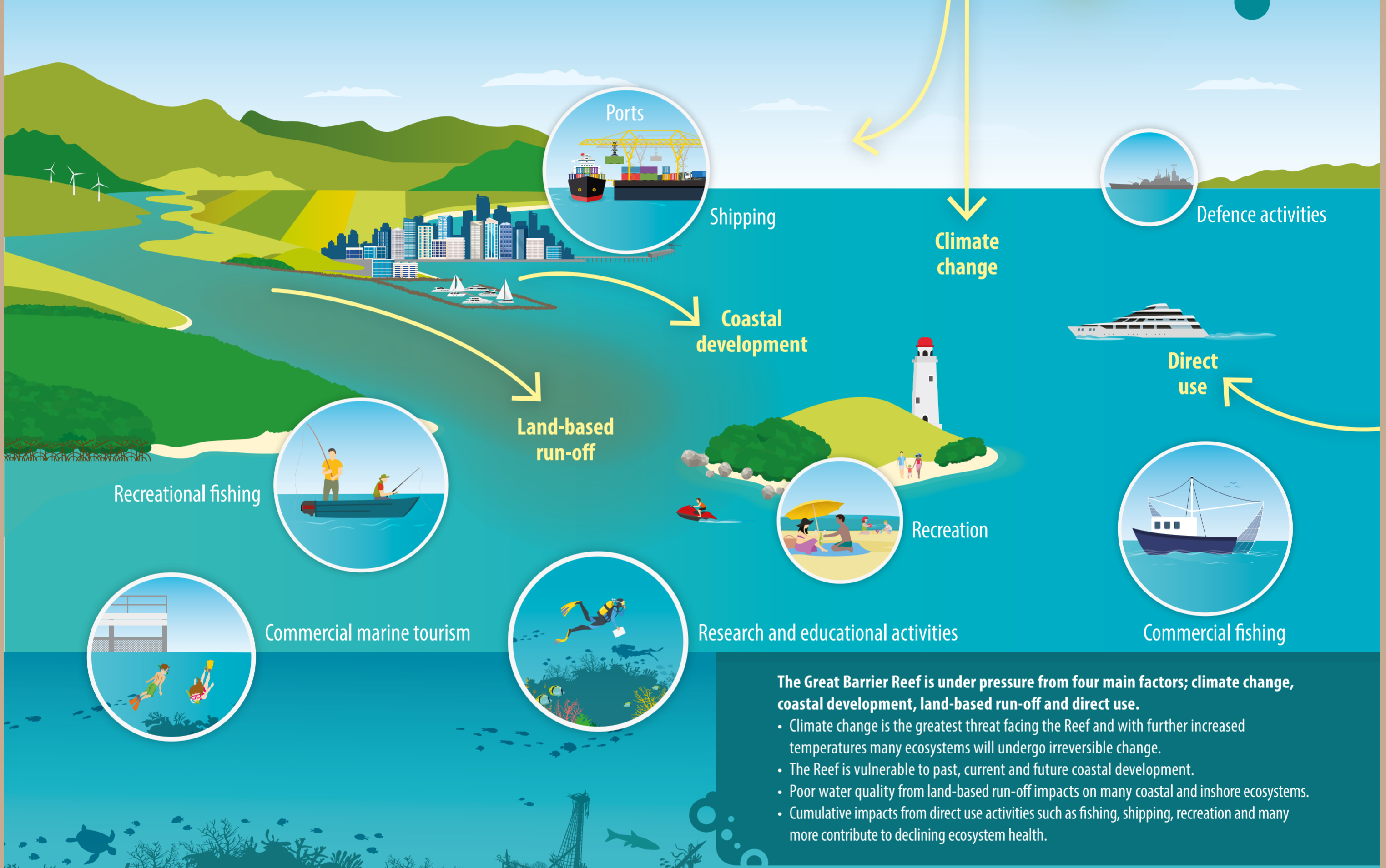


JUNIOR OUTLOOK



What is the Outlook Report? The Outlook Report is written once every five years and examines the Reef's health, its pressures and its future. The report provides a regular and reliable assessment of Reef health and its management.



The Great Barrier Reef is under pressure from four main factors; climate change, coastal development, land-based run-off and direct use.

- Climate change is the greatest threat facing the Reef and with further increased temperatures many ecosystems will undergo irreversible change.
- The Reef is vulnerable to past, current and future coastal development.
- Poor water quality from land-based run-off impacts on many coastal and inshore ecosystems.
- Cumulative impacts from direct use activities such as fishing, shipping, recreation and many more contribute to declining ecosystem health.



Hi! I'm Dr Chloe, I'm a Reef scientist at the Great Barrier Reef Marine Park Authority. How great is our Great Barrier Reef? It's so great that you can see it from space! The Reef has been through a lot, especially in the last five years. People ask me, "Is our Great Barrier Reef still great?"



G'Day! I'm Dr Dave, Chief Scientist of the Great Barrier Reef Marine Park Authority. We work with many scientists, Traditional Owners, tourism operators and citizen scientists to help us monitor our HUGE Reef! The result of all this information is the **Great Barrier Reef Outlook Report**. This report looks at different factors that affect the Reef and gives it a grade and trend for the future, just like your school grades and report card.

In this Reef Beat series, we want to introduce you to some amazing animals you can see along the Reef and the actions we can all take to protect them.



Australian Government
Great Barrier Reef
Marine Park Authority



To read the Outlook Report 2019 online and to download the Reef Beat teacher's toolkit, visit www.gbrmpa.gov.au

