



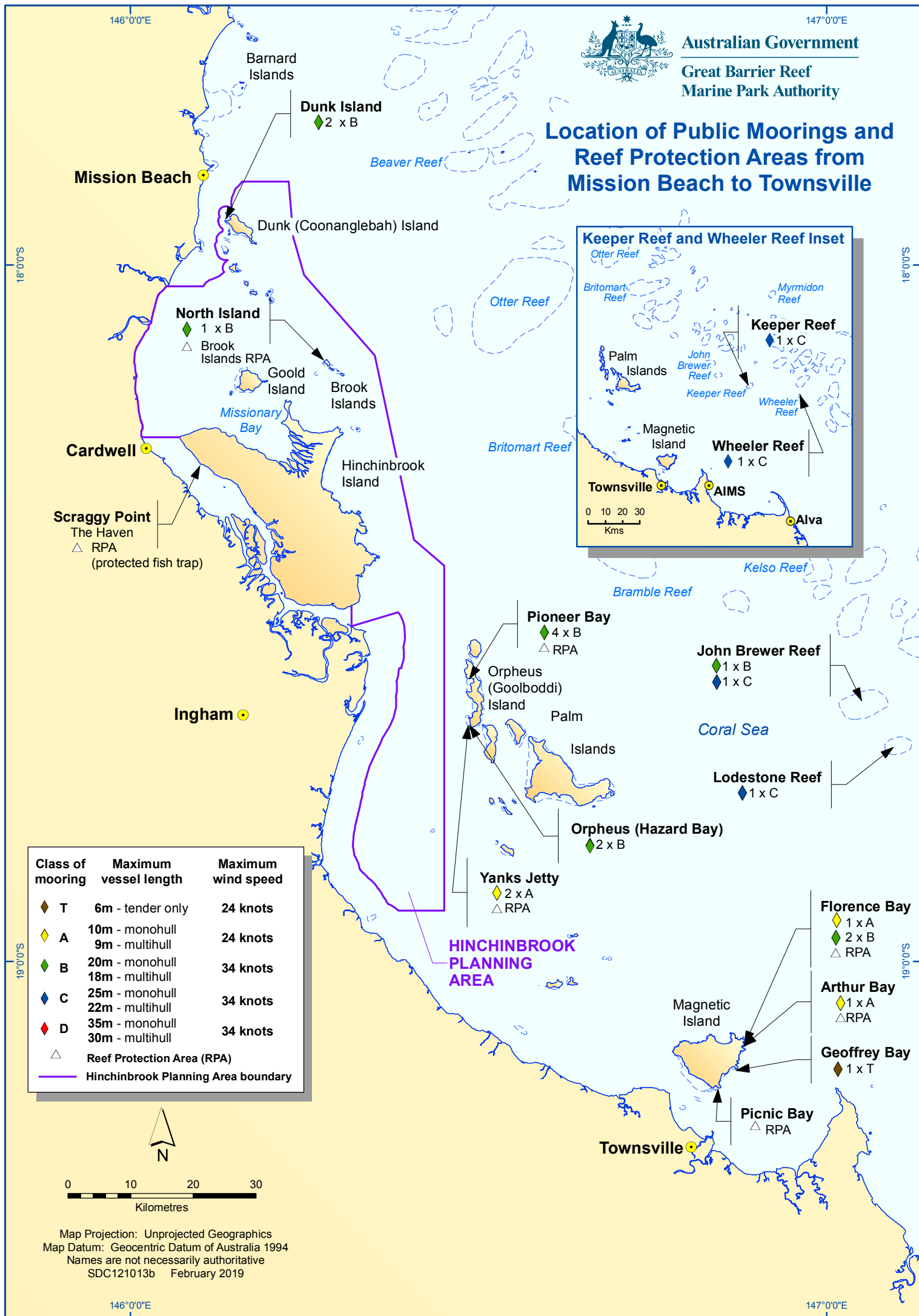
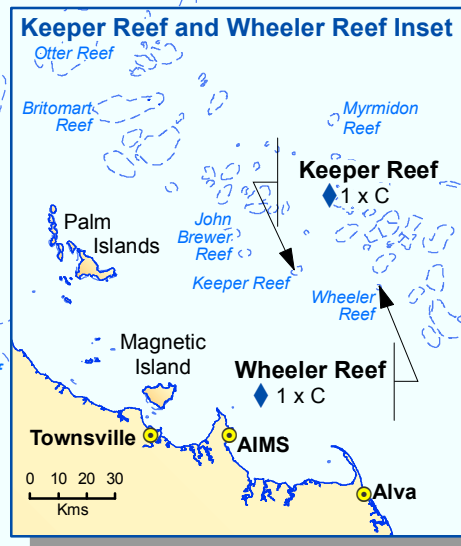
Location of Public Moorings and Reef Protection Areas from Mission Beach to Townsville

Class of mooring	Maximum vessel length	Maximum wind speed
T	6m - tender only	24 knots
A	10m - monohull 9m - multihull	24 knots
B	20m - monohull 18m - multihull	34 knots
C	25m - monohull 22m - multihull	34 knots
D	35m - monohull 30m - multihull	34 knots
△	Reef Protection Area (RPA)	
—	Hinchinbrook Planning Area boundary	



0 10 20 30
Kilometres

Map Projection: Unprojected Geographics
Map Datum: Geocentric Datum of Australia 1994
Names are not necessarily authoritative
SDC121013b February 2019





LOCATION	Mooring class	Max. vessel length	Installed latitude GDA94 ddm	Installed longitude GDA94 ddm
Brook Islands (North Island)	B	20m	18° 08.292' S	146° 16.629' E
Dunk Island	B	20m	17° 55.976' S	146° 08.251' E
	B	20m	17° 56.034' S	146° 08.094' E
John Brewer Reef	B	20m	18° 37.331' S	147° 03.149' E
	C	25m	18° 37.170' S	147° 03.368' E
Keeper Reef	C	25m	18° 44.617' S	147° 15.994' E
Lodestone Reef	C	25m	18° 41.289' S	147° 05.777' E
Magnetic Island - Geoffrey Bay	T	6m	19°09.291' S	146° 52.113' E
Magnetic Island - Arthur Bay	A	10m	19° 07.775' S	146° 52.686' E
Magnetic Island - Florence Bay	A	10m	19° 07.376' S	146° 52.810' E
	B	20m	19° 07.327' S	146° 52.937' E
	B	20m	19° 07.361' S	146° 52.867' E
Orpheus Island - Pioneer Bay	B	20m	18° 35.995' S	146° 29.335' E
	B	20m	18° 35.770' S	146° 29.242' E
	B	20m	18° 35.724' S	146° 29.211' E
	B	20m	18° 35.723' S	146° 29.267' E
Orpheus Island – Hazard Bay	B	20m	18° 38.561' S	146° 29.423' E
	B	20m	18° 38.909' S	146° 29.209' E
Orpheus Island – Yanks Jetty	A	10m	18°39.119' S	146° 29.150' E
	A	10m	18°39.193' S	146° 29.180' E
Wheeler Reef	C	25m	18° 47.713' S	147° 31.279' E

Disclaimer: The above published positions are correct to the best of the Great Barrier Reef Marine Park Authority and the Queensland Parks and Wildlife Service's knowledge at March 2019. No guarantee is given that the moorings are in the location shown in the table. Vessel skippers should verify the mooring positions with their own GPS equipment prior to attempting to access the moorings. Particular care should be taken in accessing the moorings in poor weather, reduced visibility, or at night.

Instructions to vessel masters:

1. Vessel masters are solely responsible for the safety of their vessel while using the public moorings
2. A watch must be kept at all times while the vessel is on the mooring
3. Be aware of changing weather and sea conditions and your proximity to obstacles, including coral and other vessels, and how these may be affected by mooring swing.

Mission Beach to Townsville public moorings and Reef Protection Areas

Public moorings

Public moorings are installed at popular locations and have blue double cone-shaped buoys with a colour-coded band attached. This band tells you the class (vessel length), time limits and maximum wind strength limits applying to the mooring.

A large number of privately-owned moorings also exist in the marine parks and you should have the owner's permission before using these moorings.

Using public moorings

To protect fragile reefs in high-use areas, rules to help stop misuse of public moorings and reef protection markers are in place. While there have always been rules around the use of moorings, the rules have been updated to outline what is considered misuse of public moorings. This includes:

- exceeding time limits
- attaching more than one vessel to a public mooring
- rafting-up – attaching multiple vessels in a chain when one vessel is attached to the mooring
- altering the mooring
- not following the instructions on the mooring.

These rules are to help make sure public moorings continue to be available for everyone's use. It's about playing fair while out on the water. Anyone found to be misusing a public mooring or public infrastructure may be issued with a penalty infringement notice.

The appropriate use of public moorings is outlined in Regulation 171 of the Great Barrier Reef Marine Park Regulations 2019.

For further information on anchoring and mooring visit www.gbrmpa.gov.au.

Reef Protection Areas

Some reef areas are particularly vulnerable to anchor damage. Seven Reef Protection Areas can be found in the Mission Beach to Townsville area and anchoring is not allowed in these areas. These areas are often marked by reef protection markers, which are white pyramid-shaped buoys with a blue label.

The seven Reef Protection Areas are located at:

- Brook Islands
- Scraggy Point, The Haven
- Pioneer Bay, Orpheus Island
- Yanks Jetty, Orpheus Island
- Florence Bay, Magnetic Island
- Arthur Bay, Magnetic Island
- Picnic Bay, Magnetic Island.

When visiting a reef or bay that has a Reef Protection Area (no anchoring):

- You may enter when approaching or leaving moorings or beaches. You cannot anchor inside the area, however vessels may access and anchor on the beach when conditions allow
- You cannot attach your vessel or aircraft to a reef protection marker.