

Site Plan

The purpose of public consultation will be to gather feedback on this draft site plan, specifically the proposed area selected for private moorings. Consultation is open until 14 May 2018. For further information or to provide comments on this site plan, please call (07) 4750 0700 or email consultation@gbrmpa.gov.au.

Woodwark Bay South Location

Target audience: All users (or potential users) of Woodwark Bay South Location and authorised delegates who make decisions regarding permitted use of Woodwark Bay South Location.

Objective

1. To provide guiding information to Woodwark Bay South Location users and Marine Parks permit delegates about the site plan arrangements at Woodwark Bay South Location.

Purpose

2. The purpose of this site plan is to establish an area suitable for private moorings within the Woodwark Bay South Location. In establishing this area the site plan:
 - 2.1 minimises impacts on the natural, cultural, heritage, and community values of the Woodwark Bay South Location.
 - 2.2 supports sustainable opportunities that benefit users while continuing to protect the values of the Woodwark Bay South Location.

Context

3. This site plan has been developed by the managing agencies, consistent with the Commonwealth's *Great Barrier Reef Marine Park Act 1975* and Queensland's *Marine Parks Regulation 2017*.
4. A complementary arrangement exists where the managing agencies often jointly assess applications for access to areas within both the Commonwealth jurisdiction, specifically the Great Barrier Reef Marine Park, and areas within Queensland jurisdiction, specifically the Great Barrier Reef Coast Marine Park.
5. Woodwark Bay is the only bay in the Whitsunday Planning Area which is adjacent to a resort but not classified as a setting 1 (intensive) area under the Whitsundays Plan of Management. As a setting 3 (moderate) area, this restricts the facilities that can be installed in Woodwark Bay.
6. To allow for reasonable use of Woodwark Bay in line with the values of the area, the 2017 amendments to the Whitsundays Plan of Management allowed for the installation of three (3) private moorings within the Woodwark Bay South Location.
7. To inform the location of these moorings, the Whitsundays Plan of Management requires a site plan be prepared (refer subclause 1.27 (3) in the [Whitsundays Plan of Management 1998](#)).
8. An area where private moorings can be installed has been selected after considering the existing values and existing use of Woodwark Bay (refer to the Woodwark Bay South Location Map, [Appendix A](#)).

9. The Woodwark Bay South Location is situated on the mainland coast in the Whitsundays. It is approximately 9.3 kilometres north-west of Airlie Beach. This Location is immediately adjacent to the Woodwark Bay North Location (refer to the map at [Appendix A](#)).
10. Some of the land adjacent to the Woodwark Bay South Location is within the Dryander National Park managed by Queensland's [Department of Environment and Science](#) - Queensland Parks and Wildlife Service. There is also private land associated with a resort located at the southern end of Woodwark Bay.

Site boundaries

11. The boundaries of the Woodwark Bay South Location are defined in Schedule 3 of the [Whitsundays Plan of Management 1998](#) (refer to the map at [Appendix A](#)).
12. The outer boundary of the area where private moorings can be installed is at the point located at 20° 12.650' S, 148° 38.990' E.

Site zoning

13. The waters in the Woodwark Bay South Location are within the General Use Zone (light blue zone) area under both Commonwealth and State Zoning Plans (refer Marine Park [Zoning Map 10](#) and the [Whitsunday Group Special Edition Map](#)). The objective of the General Use Zone (light blue zone) is to provide for the conservation of areas in the Marine Parks while providing opportunities for reasonable use.
14. Vessels may anchor in the Woodwark Bay South Location with due care (refer to [responsible reef practices](#) for anchoring).

Site values

Natural values

15. Dugong and turtles inhabit the Woodwark Bay South Location. Seafloor habitat varies and includes sand, fringing reef (Great Barrier Reef Marine Park Authority 2018) and mud (Colfelt 2016). Oyster rocks are also known to occur in the area (Telford 2017).
16. As part of a Great Barrier Reef-wide classification system, Woodwark Bay has been included within the classification of a non-reef bioregion; described as including mud, high levels of nutrients from the adjoining land, seagrass in sheltered sites only, good turtle and dugong feeding habitat, and wet tropic influence for much of the coast (Kerrigan et al 2010).
17. Woodwark Bay is also noted for being a vast area for exploring, with some mangroves and good recreational fishing (Colfelt 2016).

Cultural, heritage and community values

18. Across the Whitsunday Planning Area cultural heritage values are enduring and valued by Traditional Owners. They are described as unique, dynamic and diverse. The values are inherited from past generations and by maintaining those cultural heritage values today, the ancient responsibility to manage land and sea areas for future generations continues. Cultural heritage is broad and is expressed through spiritual and cultural affiliations with a site or area and through activities undertaken in accordance with customs and traditions.
19. Woodwark Bay attracts recreational visitors and tourists, with a privately owned resort at its southern end.
20. The wreck of the Duke of Cornwall (1887) is located on the eastern side of Grimston Point, adjacent to Woodwark Bay. It is protected through the *Historic Shipwrecks Act 1976*.

Site use

21. Access to the Woodwark Bay South Location is predominately by vessel (recreational and tourism operations) and occasionally by seaplane.

22. A hire operation based from the resort hires non-motorised equipment (for example, kayaks and stand-up paddle boards). A small temporary pontoon was installed under a one year State-only permission in Woodwark Bay in late 2017 to facilitate use of this equipment during all tide conditions.
23. There is a camping area located at Grimston Point within Dryander National Park. This is located on the mainland at the mouth of Woodwark Bay (refer to the map within [Appendix A](#).) The camping area is only accessible by boat and is mainly used by recreational visitors (maximum group size of 24 people). The number of visitor days has been less than 30 over the period 2012 to 2016. Facilities include pit toilets and picnic tables. Camping permits are required and fees apply. For further information see the [Department of Environment and Science](#).

Management arrangements

Whitsundays Plan of Management 1998

Settings

24. The Woodwark Bay South Location is a setting 3 (moderate use) area (refer to the map within [Appendix A](#)). This setting allows vessels with an overall vessel length of 35 metres or less and with a maximum group size of 40 people.

Private moorings

25. The Whitsundays Plan of Management provides for three (3) new private moorings at Woodwark Bay South Location subject to site planning (refer subclause 1.27(3)). The map within [Appendix A](#) shows the area where private moorings can be installed. The Whitsundays Plan of Management and this site plan do not limit the type of private mooring that can be installed (i.e. single point or fore and aft).
26. The area where private moorings can be installed has been selected as the seafloor consists of mud and sand and does not contain any known seagrass beds. It is also located for ease of vessel access to the resort and is located away from anchorages used by recreational visitors.
27. In accordance with the *Great Barrier Reef Marine Park Regulations 1983*, a process of inviting expressions of interest applies for new mooring opportunities in the Whitsunday Planning Area. See the Great Barrier Reef Marine Park Authority's [Policy on Moorings in the Great Barrier Reef](#) and [Managing Tourism Permissions to Operate in the Great Barrier Reef Marine Park](#) for further important information.
28. A permission is required for the installation and operation of a private mooring. In accordance with the *Whitsundays Plan of Management 1998* any new permissions for private moorings will require the mooring to be designed, placed and installed in a way that helps maintain the surrounding habitat and its ecological processes (refer subclause 1.27(6)).

Other Infrastructure

29. A person may be granted a permission for a tourist facility (other than moorings) to be installed in the Woodwark Bay South Location if the tourist facility is unlikely to have any noticeable or lasting negative impact on the values of the Marine Park or the public's enjoyment of the Marine Park (refer subclause 1.28(c) in the [Whitsundays Plan of Management 1998](#)).
30. Public moorings are not provided in the Woodwark Bay South Location.
31. No-anchoring areas are not established in the Woodwark Bay South Location.

Tourism operations

32. A person may be granted a permission for a hire operation using hire equipment or a non-motorised operation as part of a tourist program in the Woodwark Bay South Location (refer subclause 2.14(5) in the [Whitsundays Plan of Management 1998](#)).

Motorised water sports

33. Motorised water sports such as jet skiing (i.e. circle work) and parasailing, cannot be conducted in the Woodwark Bay South Location (refer subclause 2.8(1) in the [Whitsundays Plan of Management 1998](#)).
34. In regards to transiting when using a personal watercraft (e.g. a jet ski):
- a recreational user can transit within the Whitsunday Planning Area including setting areas.
 - a tourism operation can only transit when using certain routes. This includes transiting between the Woodwark Bay South Location and Airlie Beach or the Woodwark Bay South Location and Shute Harbour (refer subclause 2.8(2) in the [Whitsundays Plan of Management 1998](#)).

Aircraft operations

35. Seaplanes operated recreationally or as part of a tourism operation can visit a Location (i.e. Woodwark Bay South Location) twice in any seven consecutive days (refer subclause 2.7(1) in the [Whitsundays Plan of Management 1998](#)). If conducting a tourism operation, access rights will also include either a limit of 50 days, or daily access, depending on the Marine Parks permission.
36. Scenic flights can be conducted above 1000 feet (ground or water) as part of a tourism operation.

Superyachts

37. A superyacht anchorage is located in the Woodwark Bay North Location (refer to the map within [Appendix A](#)). This anchorage is for superyachts that are less than 70 metres in overall length and carrying not more than 12 people other than master and crew.

Public Consultation

38. The purpose of public consultation will be to gather feedback on this draft site plan, specifically the proposed area selected for private moorings. Consultation is open until 14 May 2018 (a minimum of 28 days). For further information or to provide comments on this site plan, please call (07) 4750 0700 or email consultation@gbmpa.gov.au.

Related legislation/ standards/ policy

Commonwealth

Great Barrier Reef Marine Park Act 1975

Great Barrier Reef Marine Park Regulations 1983

Great Barrier Reef Marine Park Zoning Plan 2003

Whitsundays Plan of Management 1998

Policy on moorings in the Great Barrier Reef

Managing Tourism Permissions to Operate in the Great Barrier Reef Marine Park (including Allocation, Latency & Tenure)

State (Queensland)

Marine Parks Regulation 2017

Marine Parks (Great Barrier Reef Coast) Zoning Plan 2004

Definitions

Managing agencies refer to the principal partner agencies in the management of the Great Barrier Reef being the Great Barrier Reef Marine Park Authority and the Department of Environment and Science - Queensland Parks and Wildlife Service.

Mooring means a permanently located facility that is designed solely for mooring a vessel or aircraft, and includes the mooring buoy, tackle and point of attachment to the seabed.

Motorised water sport has the meaning given in the *Great Barrier Reef Marine Park Regulations 1983*.

Personal watercraft has the meaning given in the *Great Barrier Reef Marine Park Regulations 1983*.

Transiting has the meaning given in the *Great Barrier Reef Marine Park Regulations 1983*.

Whitsunday Planning Area means the area circumscribed by the geographical coordinates in Part 1 of Schedule 1 of the *Whitsundays Plan of Management 1998* and depicted generally in the map in Part 2 of Schedule 1.

Further information

Assistant Director Planning
Reef Protection Branch
Great Barrier Reef Marine Park Authority
2-68 Flinders Street
PO Box 1379
TOWNSVILLE QLD 4810
AUSTRALIA

Telephone/phone: +61 7 4750 0700

Fax: +61 7 4772 6093

Email: consultation@gbmpa.gov.au

Web: www.gbmpa.gov.au

References/ related material

Colfelt, D. 2016, *100 Magic Miles of the Great Barrier Reef: the Whitsunday Islands*. Windward Publications Pty Ltd, NSW

Great Barrier Reef Marine Park Authority, 2018, 'Unpublished Reef Explorer data'.

Kerrigan et al. 2010, *Classifying the Biodiversity of the Great Barrier Reef World Heritage Area*. Great Barrier Reef Marine Park Authority.

Telford, A. 2017, *Personal communication*.

Document control information

Approved by: Director, Policy and Planning

Approved date: 06-Apr-2018;

Last reviewed: 06-Apr-2018

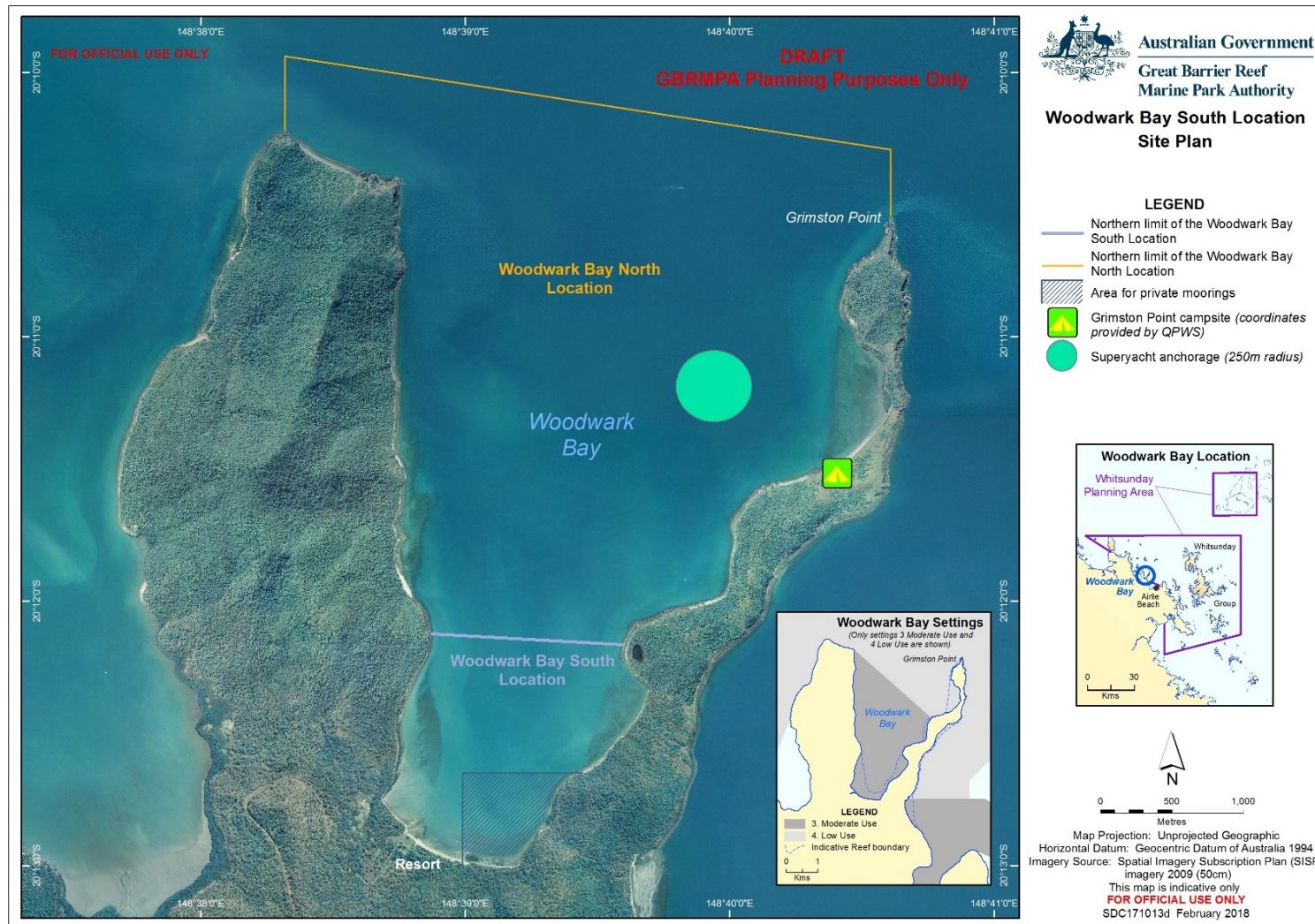
Next review:

Created: 06-Apr-2018

Custodian: Director, Policy and Planning

Replaces: New

Appendix A – Woodward Bay South Location Map



CAUTION: Only the electronic copy of a document sourced from either GBRMPA's internal '[Master Document List](#)' or external '[eLibrary](#)' is controlled. Check the revision number of printed copies against this list to verify currency.